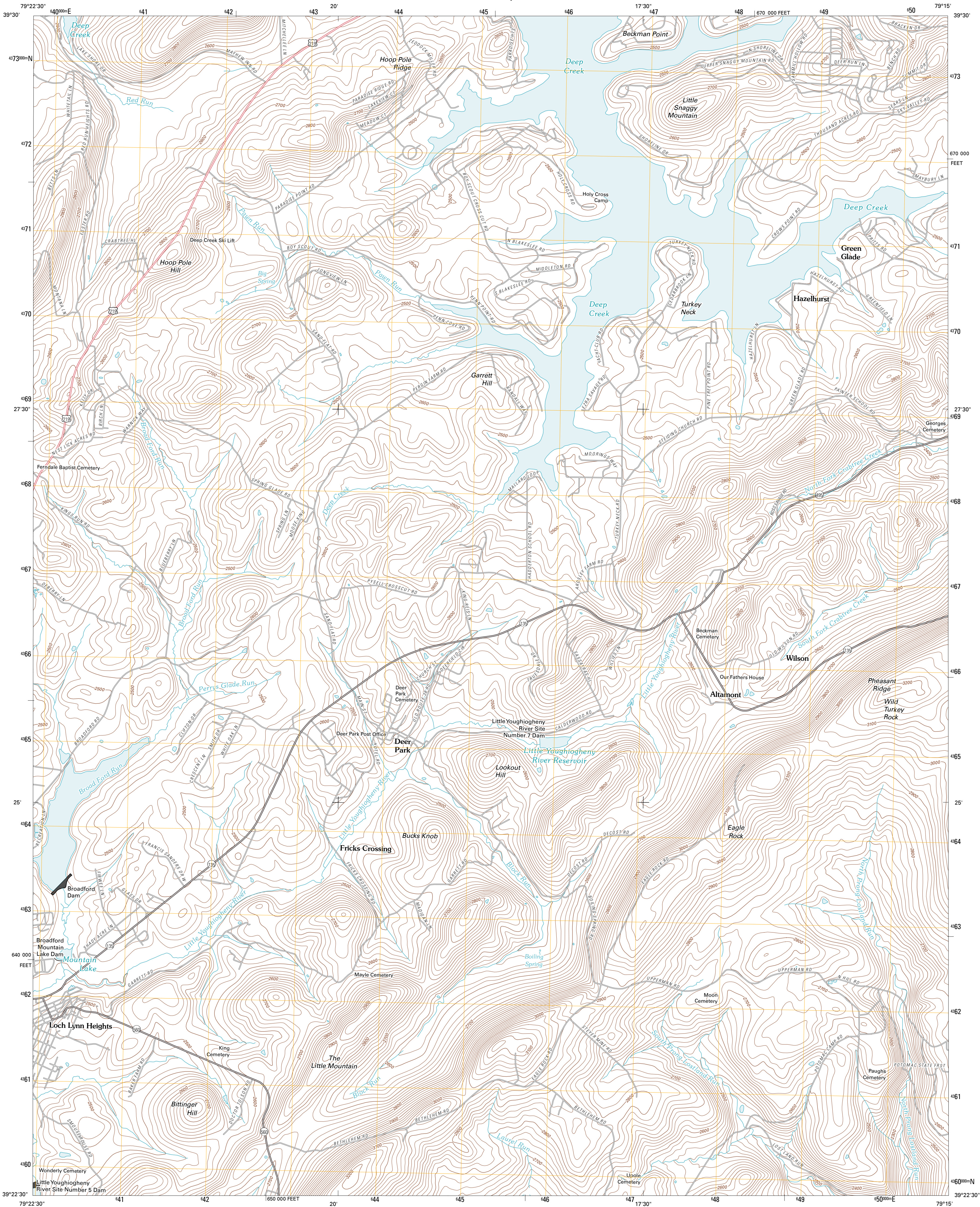




U.S. DEPARTMENT OF THE INTERIOR
U. S. GEOLOGICAL SURVEY

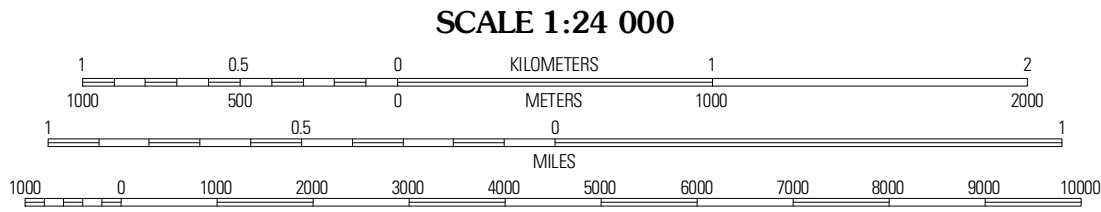
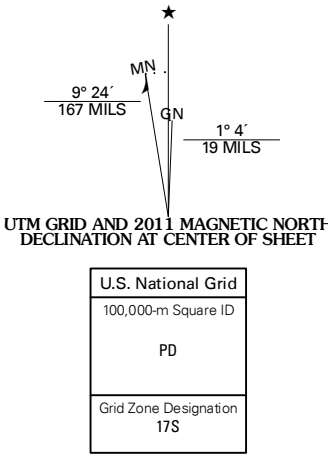


DEER PARK QUADRANGLE
MARYLAND-GARRETT CO.
7.5-MINUTE SERIES



Produced by the United States Geological Survey
North American Datum of 1983 (NAD83)
World Geodetic System of 1984 (WGS84)
1 000-meter grid: Universal Transverse Mercator, Zone 17S
10 000-foot ticks: Maryland Coordinate System of 1983

Imagery.....NAIP, June 2009
Roads.....©2006-2010 Tele Atlas
Names.....GNS, 2010
Hydrography.....National Hydrography Dataset, 2009
Contours.....National Elevation Dataset, 1999
Boundaries.....Census, IBWC, IBC, USGS, 1972-2010



CONTOUR INTERVAL 20 FEET
NORTH AMERICAN VERTICAL DATUM OF 1988
This map was produced to conform with version 0.5.10
of the USGS US Topo Product Standard.
A metadata file associated with this product is draft version 0.5.15



| | | |
|------------|-----------|-------------|
| Sang Run | McHenry | Blittinger |
| Oakland | Deer Park | Kitzmiller |
| Table Rock | Gorman | Mount Storm |

| ROAD CLASSIFICATION | | |
|---------------------|-------------|------------|
| Interstate Route | State Route | Local Road |
| US Route | 4WD | |
| Ramp | | |

DEER PARK, MD
2011