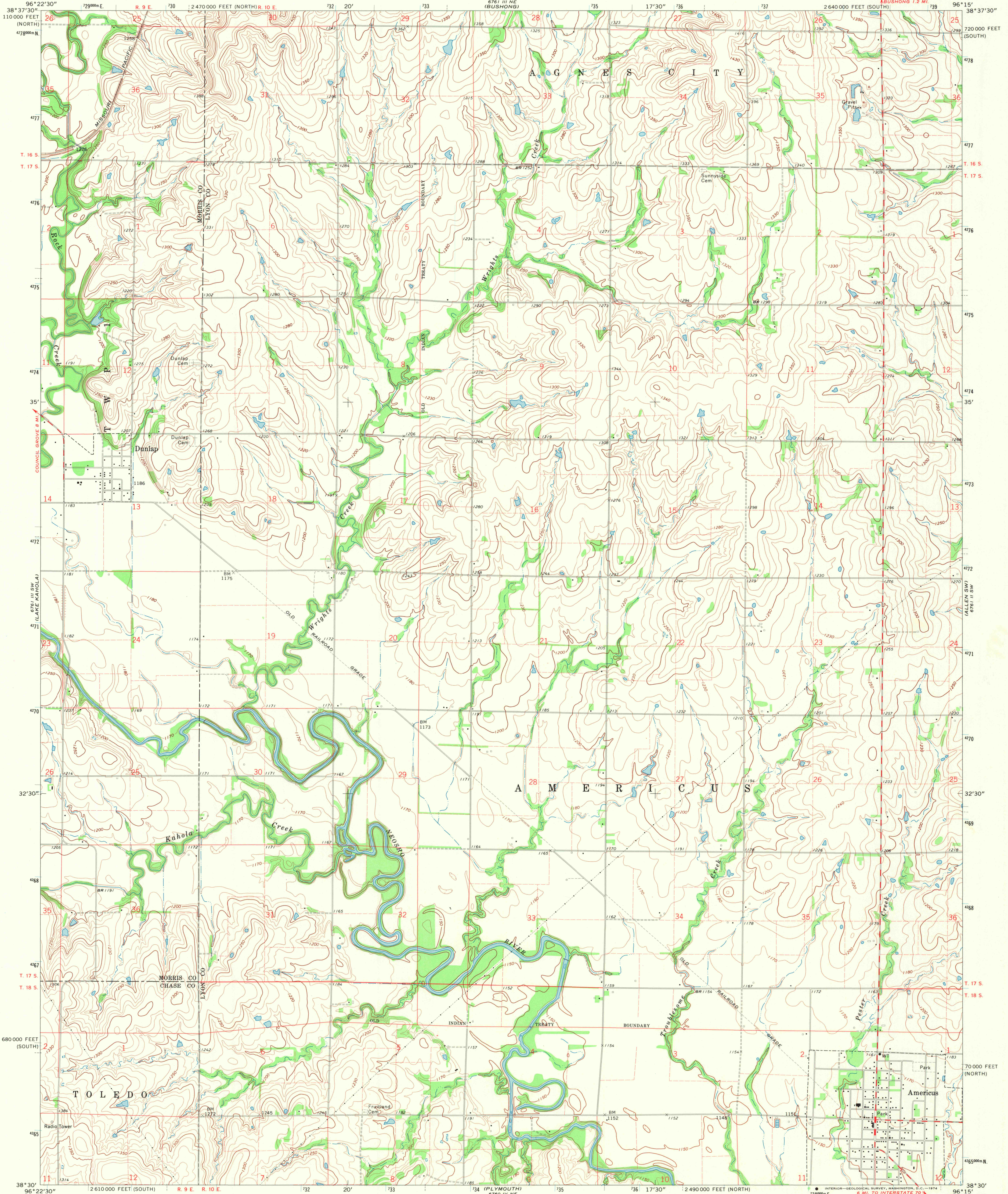
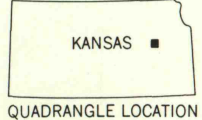
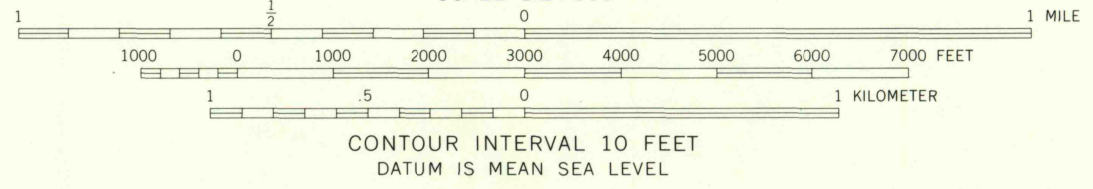
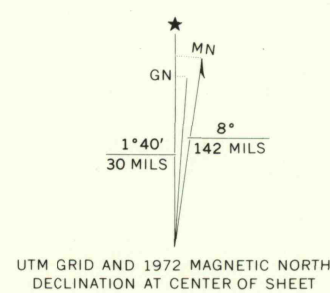


UNITED STATES
DEPARTMENT OF THE INTERIOR
GEOLOGICAL SURVEY

AMERICUS QUADRANGLE
KANSAS
7.5 MINUTE SERIES (TOPOGRAPHIC)



Mapped, edited, and published by the Geological Survey
Control by USGS and USC&GS
Topography by photogrammetric methods from aerial
photographs taken 1971. Field checked 1972
Projection: Kansas coordinate system, south zone
(Lambert conformal conic)
10,000-foot grid ticks based on Kansas coordinate
system, south and north zones
1000-meter Universal Transverse Mercator grid ticks,
zone 14, shown in blue. 1927 North American datum
Fine red dashed lines indicate selected fence and field lines where
generally visible on aerial photographs. This information is unchecked



ROAD CLASSIFICATION
Primary highway, hard surface
Secondary highway, hard surface
Unimproved road
Interstate Route
U.S. Route
State Route

AMERICUS, KANS.
N3830-W9615/7.5

1972

USGS
Historic Topographic Division
AMS 6761 III SE-SERIES V878

MAY 2 2 1974

2350