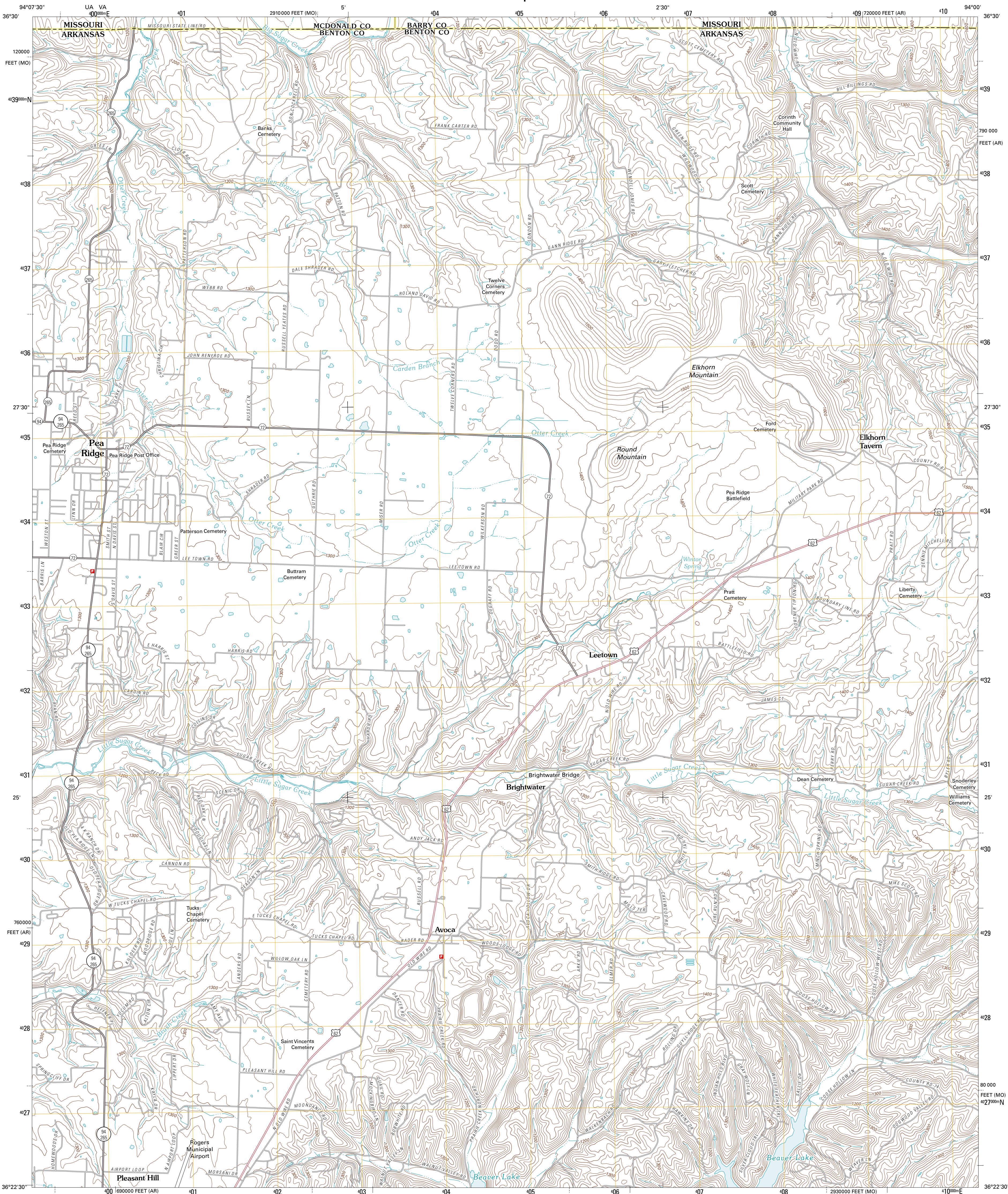




U.S. DEPARTMENT OF THE INTERIOR  
U. S. GEOLOGICAL SURVEY



PEA RIDGE QUADRANGLE  
ARKANSAS-MISSOURI  
7.5-MINUTE SERIES

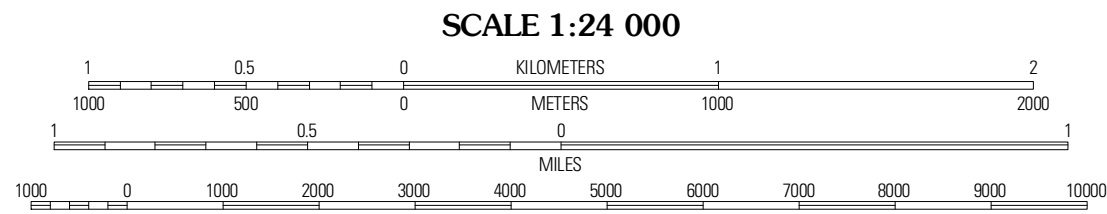


Produced by the United States Geological Survey  
North American Datum of 1983 (NAD83)  
World Geodetic System of 1984 (WGS84) Projection and  
1 000-meter grid: Universal Transverse Mercator, Zone 15S  
10 000-foot ticks: Arkansas Coordinate System of 1983  
(north zone), Missouri Coordinate System of 1983 (west zone)

Imagery.....NAP, September 2009  
Roads.....2006-2010 Tele Atlas  
Names.....GNIS, 2010  
Hydrography.....National Hydrography Dataset, 2009  
Contours.....National Elevation Dataset, 2002  
Boundaries.....Census, IBWC, IBC, USGS, 1972 - 2010

UTM GRID AND 2011 MAGNETIC NORTH  
DECLINATION AT CENTER OF SHEET

U.S. National Grid
100,000-m Square ID
40
UA VA
Grid Zone Designation
15S



CONTOUR INTERVAL 20 FEET  
NORTH AMERICAN VERTICAL DATUM OF 1988  
This map was produced to conform with version 0.5.10  
of the USGS US Topo Product Standard.  
A metadata file associated with this product is draft version 0.5.16



Powell	Jacket	Seligman
Bentonville North	Pea Ridge	Garfield
Bentonville South	Rogers	War Eagle

ROAD CLASSIFICATION			
Interstate Route	State Route	Local Road	4WD
US Route	US Route	US Route	State Route

PEA RIDGE, AR-MO  
2011

ADJOINING 7.5 QUADRANGLES