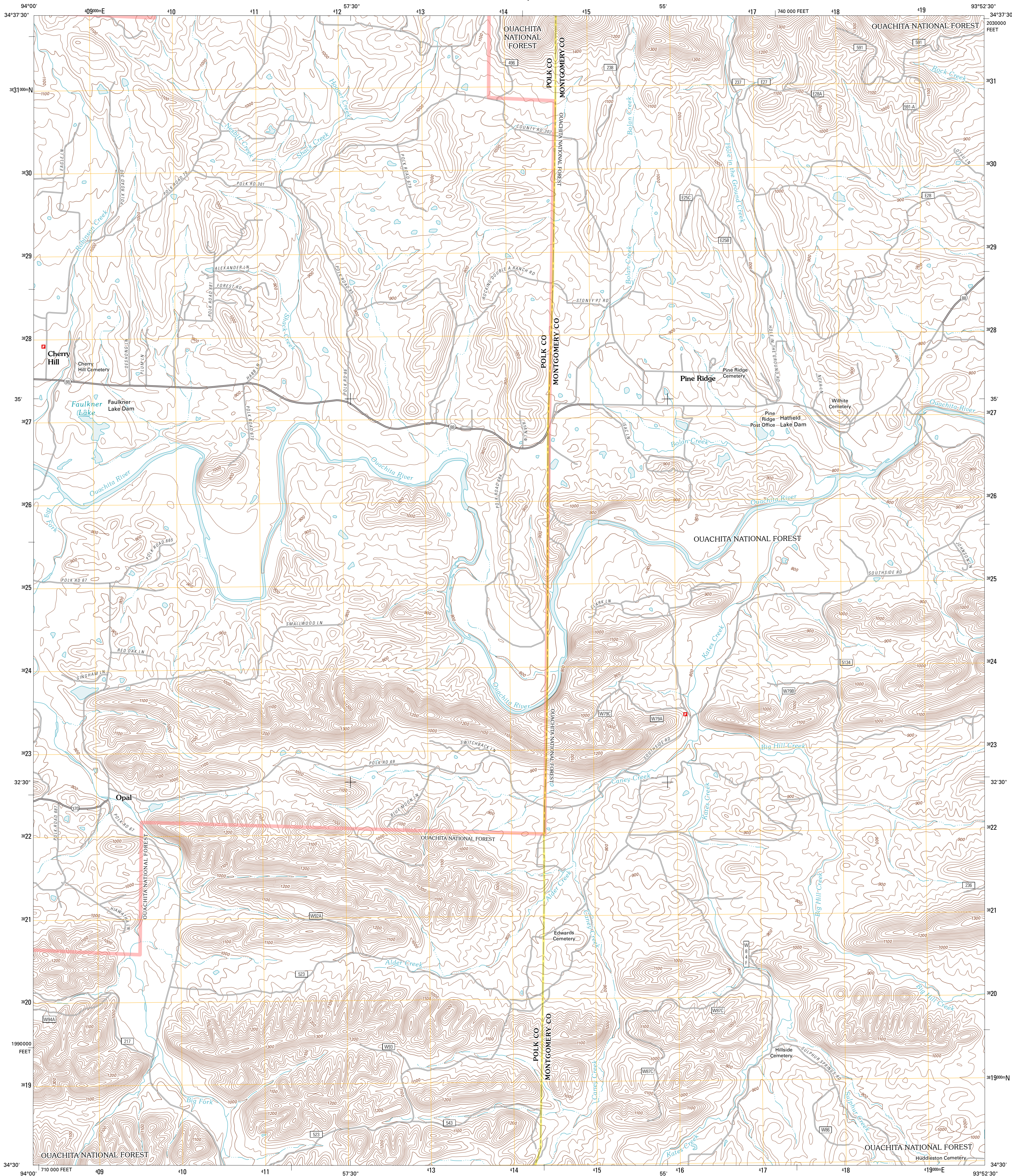




U.S. DEPARTMENT OF THE INTERIOR  
U. S. GEOLOGICAL SURVEY

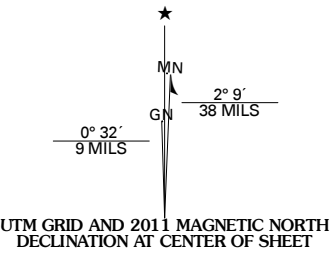


PINE RIDGE QUADRANGLE  
ARKANSAS  
7.5-MINUTE SERIES

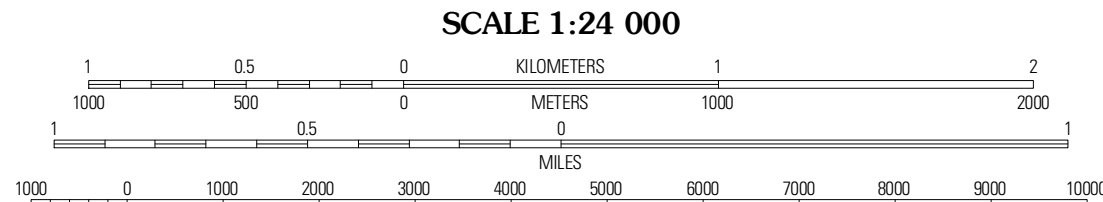


Produced by the United States Geological Survey  
North American Datum of 1983 (NAD83)  
World Geodetic System of 1984 (WGS84). Projection and  
1 000-meter grid: Universal Transverse Mercator, Zone 15S  
10 000-foot ticks: Arkansas Coordinate System of 1983  
(south zone)

Images:.....NAIP, September 2009  
Roads:.....©2006-2010 Tele Atlas  
Roads within US Forest Service Lands:.....FSTopo Data  
with limited Forest Service updates, 2009  
Names:.....GNIS, 2010  
Hydrography:.....National Hydrography Dataset, 2009  
Contours:.....National Elevation Dataset, 2003  
Boundaries:.....Census, IBWC, IBK, USGS, 1972 - 2010



U.S. National Grid
100,000-m Square ID
VU
Grid Zone Designation
15S

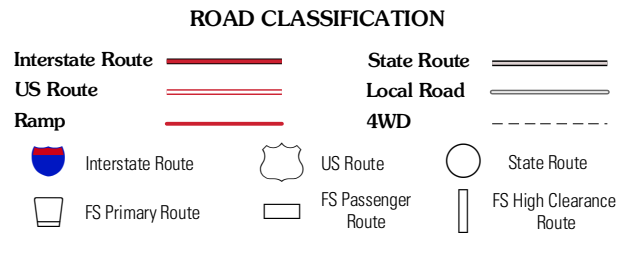


CONTOUR INTERVAL 20 FEET  
NORTH AMERICAN VERTICAL DATUM OF 1988  
This map was produced to conform with version 0.5.10  
of the USGS US Topo Product Standard.  
A metadata file associated with this product is draft version 0.5.16



Y	City	Buck Knob	Brushy Creek Mountain
Board Camp	Pine Ridge	Oden	
Nichols Mountain	Big Fork	Polk Creek Mountain	

ADJOINING 7.5 QUADRANGLES



Check with local Forest Service unit for current travel conditions and restrictions.

PINE RIDGE, AR  
2011