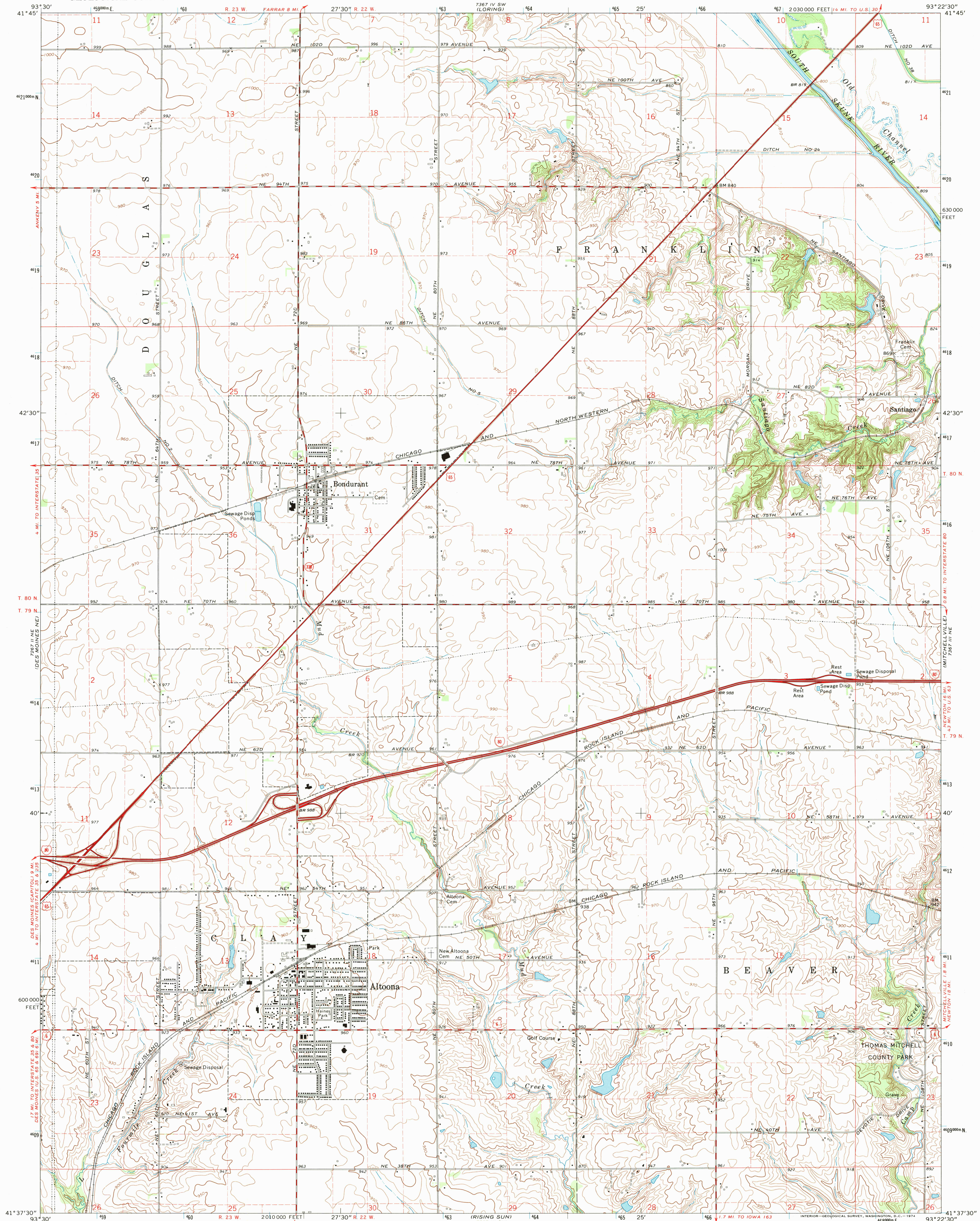


1972 (S&S)  
(E-L-1465)

UNITED STATES  
DEPARTMENT OF THE INTERIOR  
GEOLOGICAL SURVEY

ALTOONA QUADRANGLE  
IOWA—POLK CO.  
7.5 MINUTE SERIES (TOPOGRAPHIC)  
NW 1/4 MITCHELLVILLE 15' QUADRANGLE



Mapped, edited, and published by the Geological Survey

Control by USGS and USC&GS

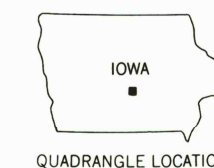
Topography by photogrammetric methods from aerial photographs taken 1971. Field checked 1972

Projection and 10,000-foot grid ticks: Iowa coordinate system, south zone (Lambert conformal conic)  
1000-meter Universal Transverse Mercator grid ticks, zone 15, shown in blue. 1927 North American datum

Fine red dashed lines indicate selected fence and field lines where generally visible on aerial photographs. This information is unchecked

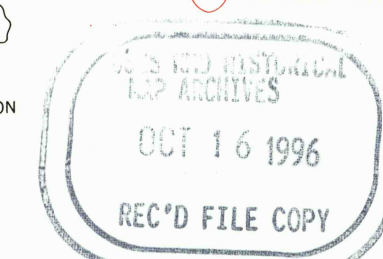
UTM GRID AND 1972 MAGNETIC NORTH DECLINATION AT CENTER OF SHEET

SCALE 1:24,000  
CONTOUR INTERVAL 10 FEET  
DOTTED LINES REPRESENT 5-FOOT CONTOURS  
DATUM IS MEAN SEA LEVEL



QUADRANGLE LOCATION

ROAD CLASSIFICATION  
Primary highway, hard surface  
Secondary highway, hard surface  
Light-duty road, hard or improved surface  
Unimproved road  
Interstate Route  
U. S. Route  
State Route



ALTOONA, IOWA  
NW 1/4 MITCHELLVILLE 15' QUADRANGLE  
N4137.5—W9322.5/7.5  
1972  
AMS 7367 III NW—SERIES V876

ISSN 0-607-15693-7  
9 780607 156935