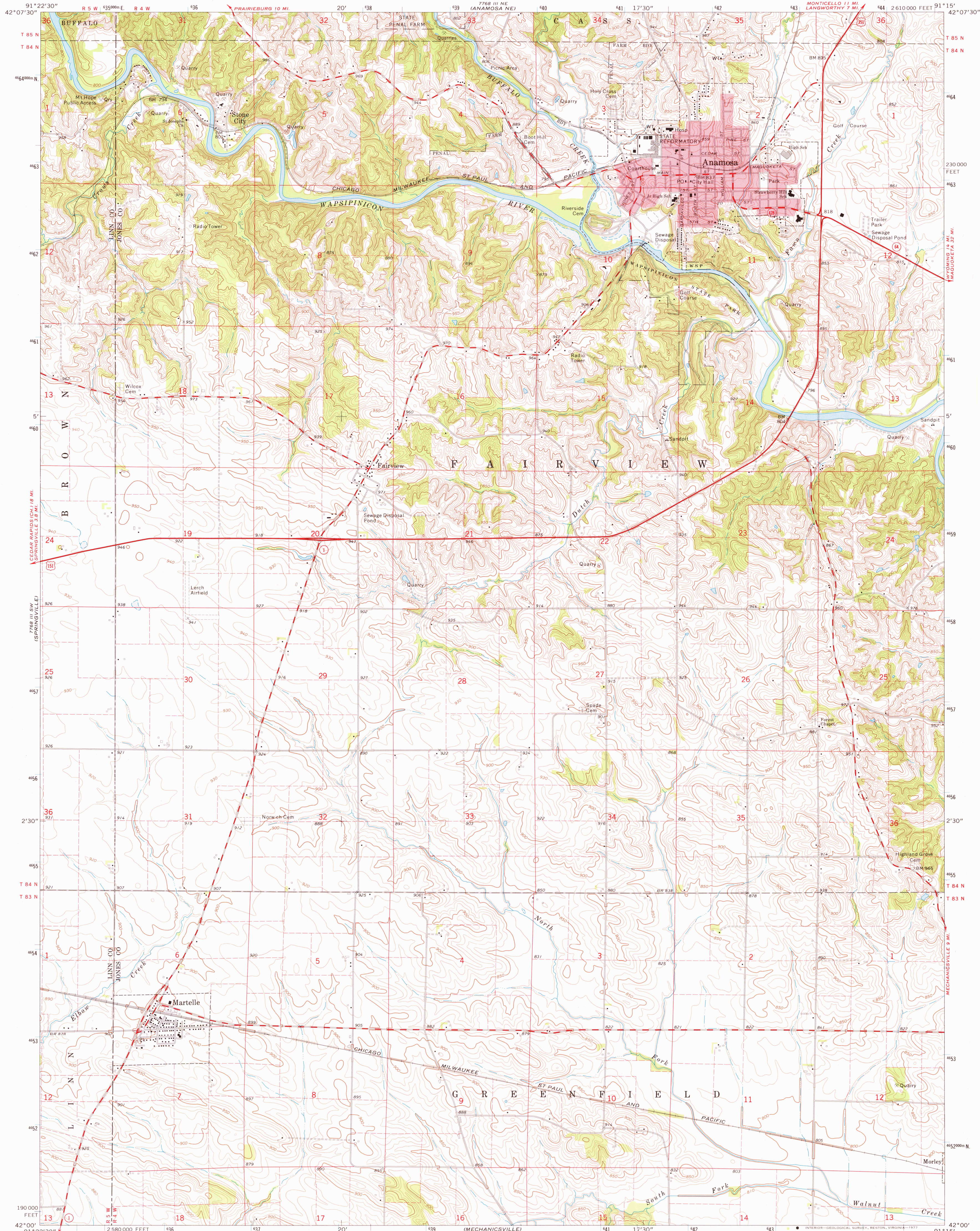


UNITED STATES
DEPARTMENT OF THE INTERIOR
GEOLOGICAL SURVEY

ANAMOSA QUADRANGLE
IOWA

7.5 MINUTE SERIES (TOPOGRAPHIC)

2610 000 FEET 91°15' 42°07'30"



Mapped, edited, and published by the Geological Survey

Control by USGS and NOS/NOAA

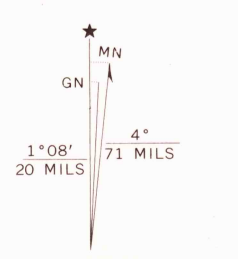
Topography by photogrammetric methods from aerial photographs taken 1973. Field checked 1973

Projection and 10,000-foot grid ticks: Iowa coordinate system, north zone (Lambert conformal conic)

1000-metre Universal Transverse Mercator grid ticks, zone 15, shown in blue. 1927 North American datum

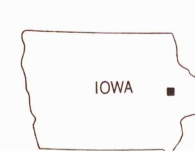
Red tint indicates area in which only landmark buildings are shown

Fine red dashed lines indicate selected fence and field lines where generally visible on aerial photographs. This information is unchecked



CONTOUR INTERVAL 10 FEET
NATIONAL GEODETIC VERTICAL DATUM OF 1929

THIS MAP COMPLIES WITH NATIONAL MAP ACCURACY STANDARDS
FOR SALE BY U.S. GEOLOGICAL SURVEY, DENVER, COLORADO 80225, OR RESTON, VIRGINIA 22092
AND BY THE IOWA GEOLOGICAL SURVEY, IOWA CITY, IOWA 52240
A FOLDER DESCRIBING TOPOGRAPHIC MAPS AND SYMBOLS IS AVAILABLE ON REQUEST



ROAD CLASSIFICATION	
Primary highway, hard surface	Light-duty road, hard or improved surface
Secondary highway, hard surface	Unimproved road
Interstate Route	U. S. Route
	State Route

USGS
Historical File
Topographic Division

ANAMOSA, IOWA
N4200--W9115/7.5

1973

AMS 7768 III SE-SERIES V876

MAY 0 2 1977

2800