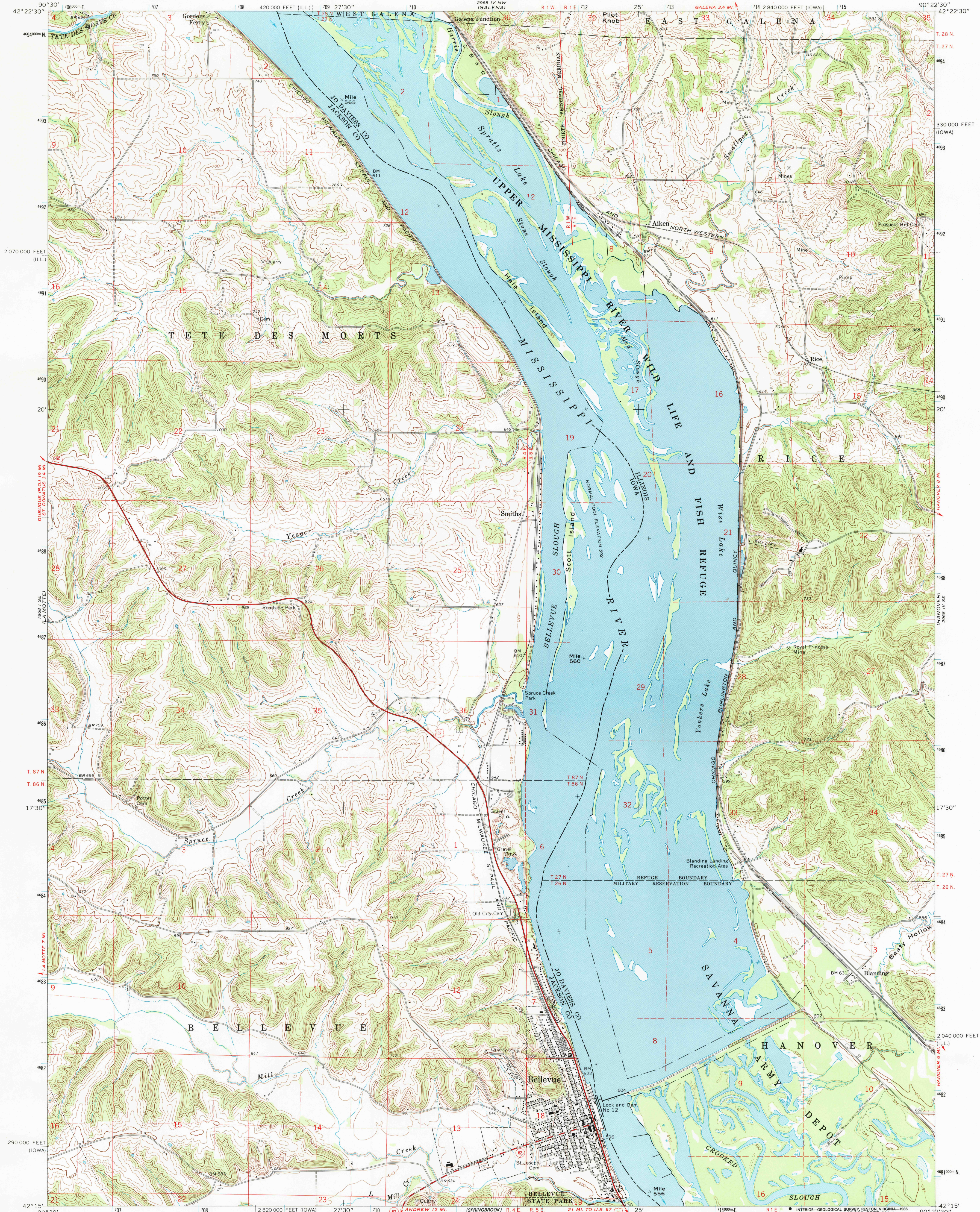


UNITED STATES  
DEPARTMENT OF THE INTERIOR  
GEOLOGICAL SURVEY

BELLEVUE QUADRANGLE  
IOWA-ILLINOIS  
7.5 MINUTE SERIES (TOPOGRAPHIC)



Mapped, edited and published by the Geological Survey

Control by USGS and USC&GS

Topography by photogrammetric methods from aerial photographs taken 1966 and planetable surveys 1968

Polyconic projection. 1927 North American datum

10,000-foot grids based on Iowa coordinate system, north zone and Illinois coordinate system, west zone

1000-meter Universal Transverse Mercator grid ticks, zone 15, shown in blue

Fine red dashed lines indicate selected fence and field lines where generally visible on aerial photographs. This information is unchecked

There may be private inholdings within the boundaries of the National or State reservations shown on this map

To place on the predicted North American Datum 1983, move the projection lines 2 meters north and 11 meters east as shown by dashed corner ticks

SCALE 1:24,000

CONTOUR INTERVAL 20 FEET  
DOTTED LINES REPRESENT 5-FOOT CONTOURS  
NATIONAL GEODETIC VERTICAL DATUM OF 1929

UTM GRID AND 1968 MAGNETIC NORTH DECLINATION AT CENTER OF SHEET

THIS MAP COMPLIES WITH NATIONAL MAP ACCURACY STANDARDS

FOR SALE BY U. S. GEOLOGICAL SURVEY, DENVER, COLORADO 80225, OR RESTON, VIRGINIA 22092

IOWA GEOLOGICAL SURVEY, IOWA CITY, IOWA 52240,  
AND STATE GEOLOGICAL SURVEY, URBANA, ILLINOIS 61801

A FOLDER DESCRIBING TOPOGRAPHIC MAPS AND SYMBOLS IS AVAILABLE ON REQUEST

ROAD CLASSIFICATION

Primary highway, all weather, hard surface  
Secondary highway, all weather, hard surface  
Light-duty road, all weather, improved surface  
Unimproved road, fair or dry weather

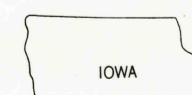
U. S. Route  
State Route

BELLEVUE, IOWA-ILL.

42090-CF-024

1968

DMA 2968 IV SW-SERIES V863



QUADRANGLE LOCATION

USGS MAP HISTORICAL MAP

APR 19 1988

REC'D FILE COPY