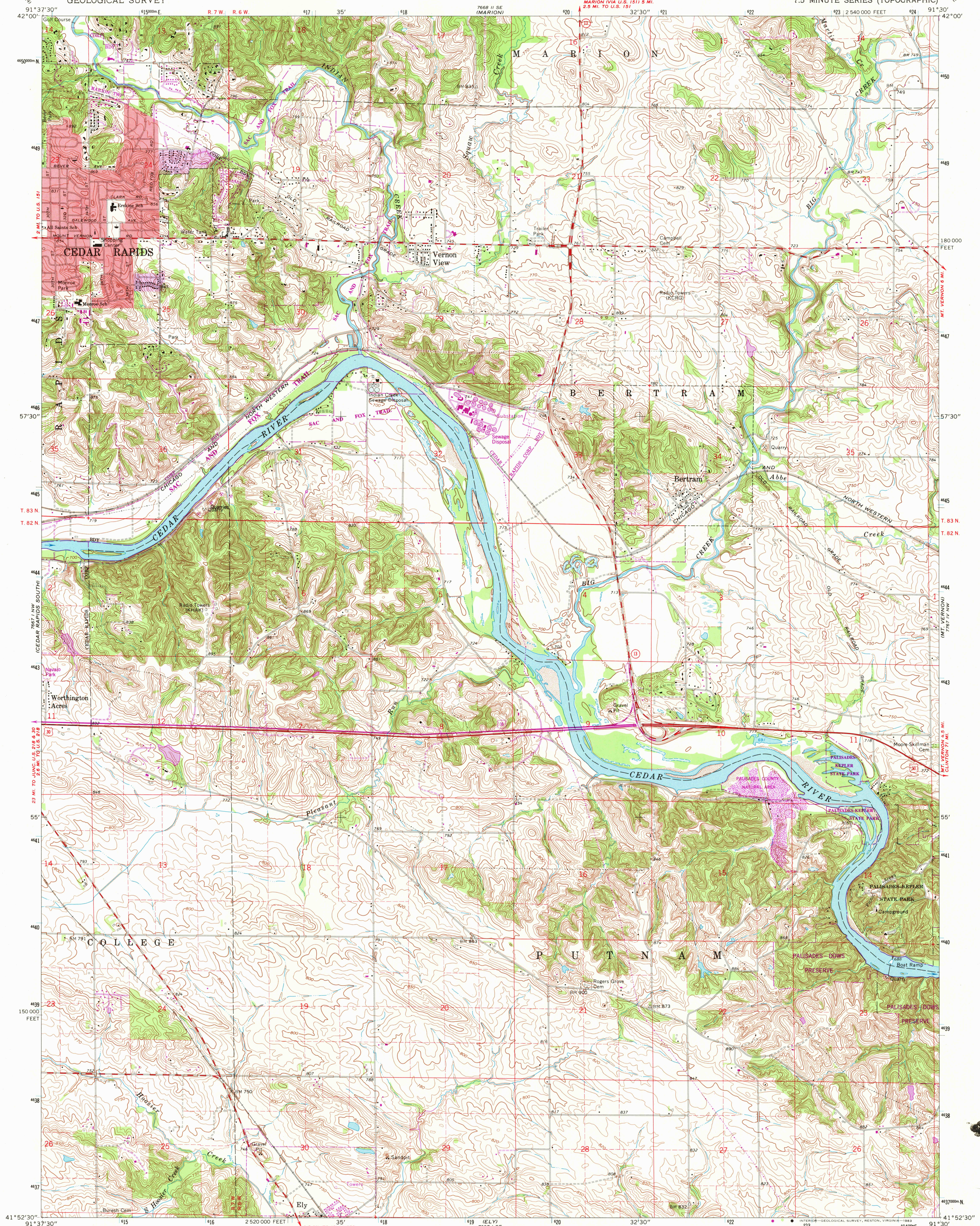


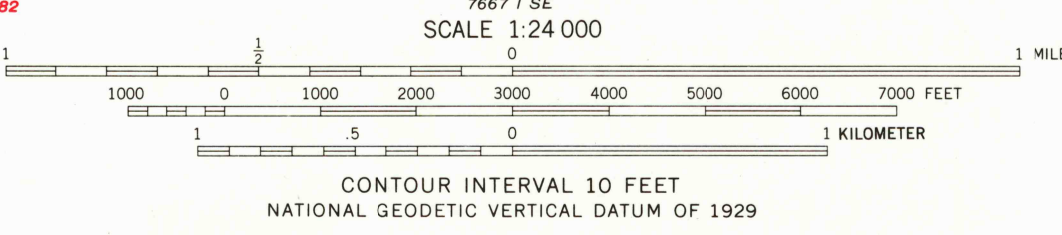
UNITED STATES
DEPARTMENT OF THE INTERIOR
GEOLOGICAL SURVEY

BERTRAM QUADRANGLE
IOWA-LINN CO.
7.5 MINUTE SERIES (TOPOGRAPHIC)



Mapped, edited, and published by the Geological Survey

Control by USGS, NOS/NOAA, and Iowa Geodetic Survey
Topography by photogrammetric methods from aerial photographs taken 1965. Field checked 1968
Polyconic projection. 10,000-foot grid ticks based on Iowa coordinate system, north zone. 1000-meter Universal Transverse Mercator grid ticks, zone 15, shown in blue. 1927 North American Datum. To place on the predicted North American Datum 1983 move the projection lines 3 meters north and 13 meters east as shown by dashed corner ticks
Fine red dashed lines indicate selected fence and field lines where generally visible on aerial photographs. This information is unchecked
Red tint indicates area in which only landmark buildings are shown
There may be private inholdings within the boundaries of the National or State reservations shown on this map



ROAD CLASSIFICATION

Primary highway, all weather, hard surface	Light-duty road, all weather, improved surface
Secondary highway, all weather, hard surface	Unimproved road, fair or dry weather
U. S. Route	State Route



BERTRAM, IOWA
N4152.5-W9130/7.5
1968
PHOTOREVISED 1982
DMA 7667 I NE-SERIES V876

THIS MAP COMPLIES WITH NATIONAL MAP ACCURACY STANDARDS
FOR SALE BY U. S. GEOLOGICAL SURVEY, DENVER, COLORADO 80225, OR RESTON, VIRGINIA 22092
AND BY THE IOWA GEOLOGICAL SURVEY, IOWA CITY, IOWA 52240
A FOLDER DESCRIBING TOPOGRAPHIC MAPS AND SYMBOLS IS AVAILABLE ON REQUEST

Revisions shown in purple and woodland compiled from aerial photographs taken 1980 and other sources. This information not field checked. Map edited 1982
Purple tint indicates extension of urban areas