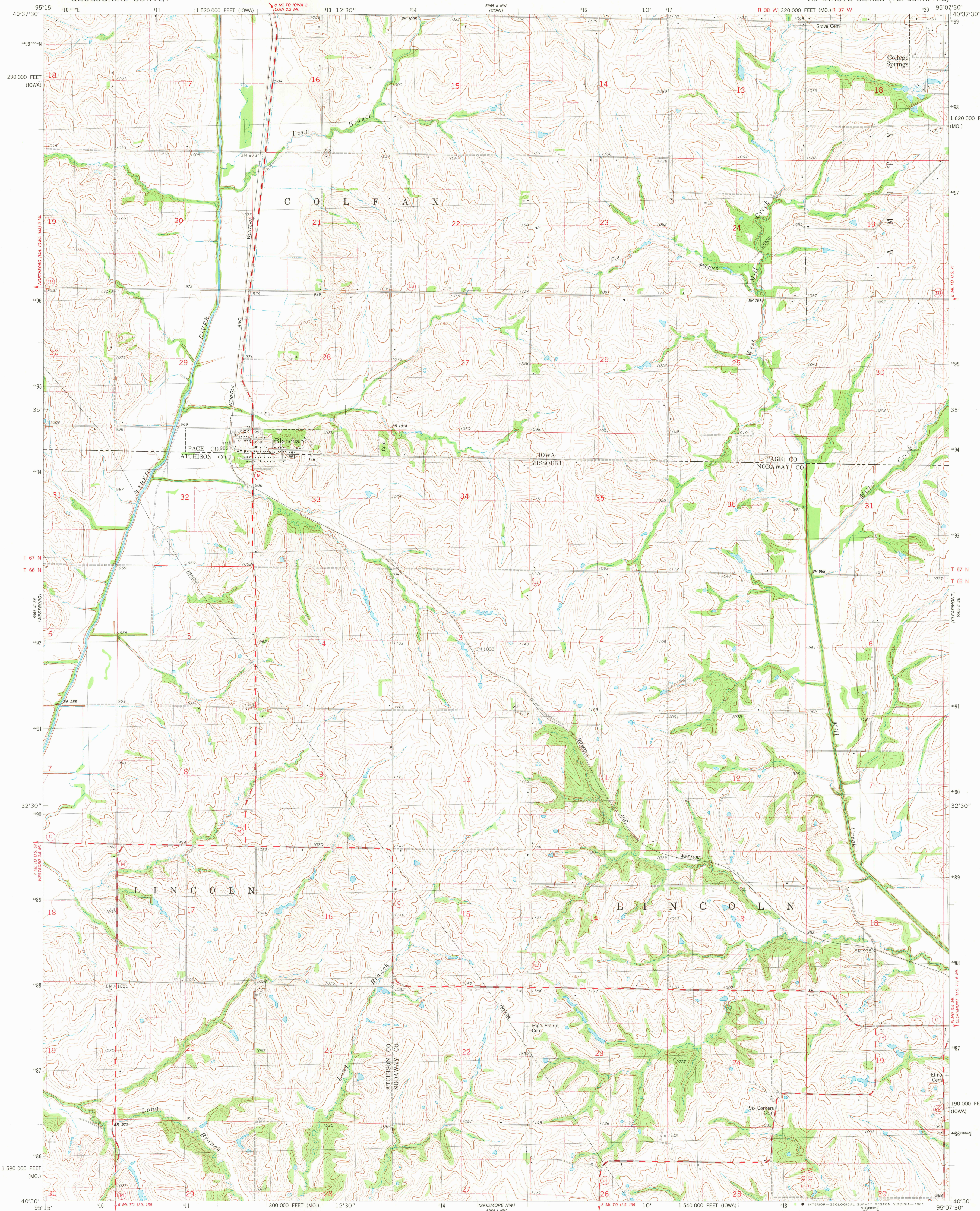
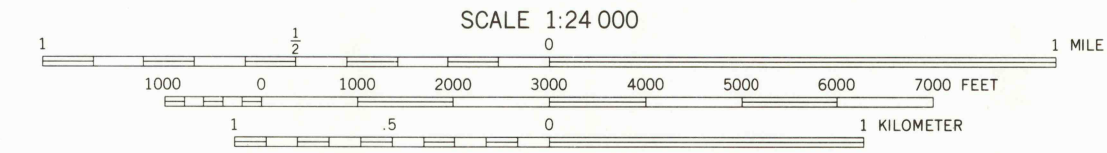
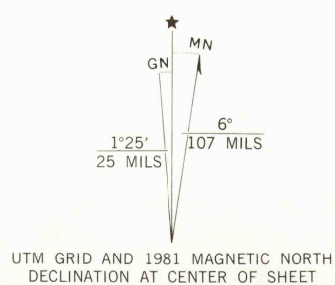


UNITED STATES  
DEPARTMENT OF THE INTERIOR  
GEOLOGICAL SURVEY

BLANCHARD QUADRANGLE  
IOWA—MISSOURI  
7.5 MINUTE SERIES (TOPOGRAPHIC)



Mapped, edited, and published by the Geological Survey  
Control by USGS and NOS/NOAA  
Topography by photogrammetric methods from aerial photographs  
taken 1976. Field checked 1977. Map edited 1981  
Projection: Missouri coordinate system, west zone  
(transverse Mercator)  
10,000-foot grid ticks based on Missouri coordinate  
system, west zone and Iowa coordinate system, south zone  
1000-meter Universal Transverse Mercator grid, zone 15  
1927 North American Datum  
To place on the predicted North American Datum 1983  
move the projection lines 4 meters north and  
22 meters east as shown by dashed corner ticks



THIS MAP COMPLIES WITH NATIONAL MAP ACCURACY STANDARDS  
IOWA GEOLOGICAL SURVEY, IOWA CITY, IOWA 52240,  
AND THE DIVISION OF GEOLOGY AND LAND SURVEY  
MISSOURI DEPARTMENT OF NATURAL RESOURCES, ROLLA, MISSOURI 65401  
A FOLDER DESCRIBING TOPOGRAPHIC MAPS AND SYMBOLS IS AVAILABLE ON REQUEST



ROAD CLASSIFICATION  
Primary highway, hard surface ——— Light-duty road, hard or improved surface  
Secondary highway, hard surface ——— Unimproved road  
Interstate Route ——— U.S. Route ——— State Route

BLANCHARD, IOWA—MO.  
N4030-W9507.5/7.5

1981

DMA 6965 II SW-SERIES V879

JUN 29 1981  
9800