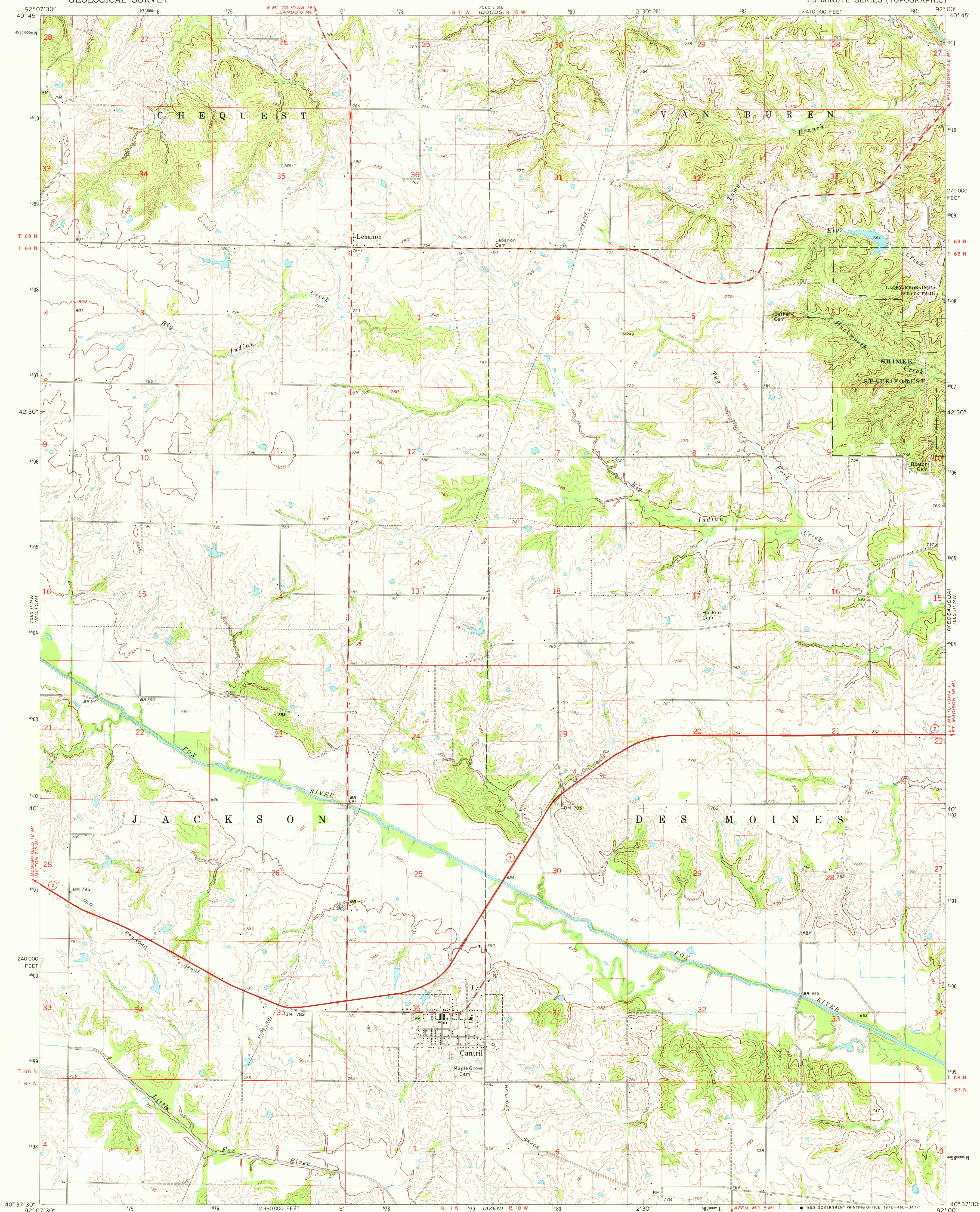


UNITED STATES
DEPARTMENT OF THE INTERIOR
GEOLOGICAL SURVEY

CANTRIL QUADRANGLE
IOWA—VAN BUREN CO.
7.5 MINUTE SERIES (TOPOGRAPHIC)



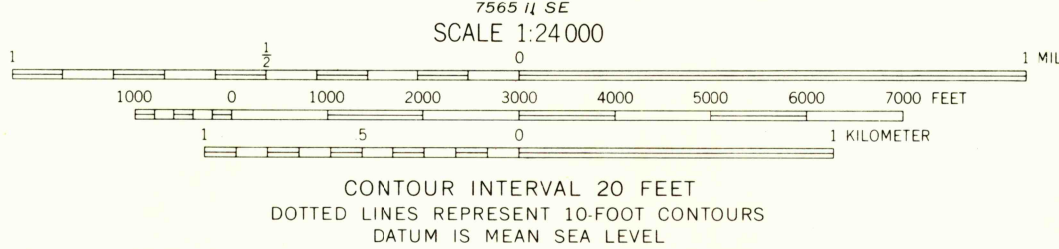
Mapped, edited, and published by the Geological Survey
Control by USGS and USC&GS

Topography by photogrammetric methods from aerial
photographs taken 1965. Field checked 1970

Polyconic projection. 1927 North American datum
10,000-foot grid based on Iowa coordinate system, south zone
1000-meter Universal Transverse Mercator grid ticks,
zone 15, shown in blue

Fine red dashed lines indicate selected fence and field lines where
generally visible on aerial photographs. This information is unchecked

UTM GRID AND 1970 MAGNETIC NORTH
DECLINATION AT CENTER OF SHEET



THIS MAP COMPLIES WITH NATIONAL MAP ACCURACY STANDARDS
FOR SALE BY U. S. GEOLOGICAL SURVEY, DENVER, COLORADO 80225 OR WASHINGTON, D. C. 20242
AND BY THE IOWA GEOLOGICAL SURVEY, IOWA CITY, IOWA 52240
A FOLDER DESCRIBING TOPOGRAPHIC MAPS AND SYMBOLS IS AVAILABLE ON REQUEST

ROAD CLASSIFICATION
Primary highway, all weather, hard surface
Secondary highway, all weather, hard surface
Light-duty road, all weather, improved surface
Unimproved road, fair or dry weather
State Route



CANTRIL, IOWA
N4037.5—W9200/7.5

1970
AMS 7565 II NE—SERIES V876

JUL 3 1972

Denver
2000

USGS
HISTORICAL FILE
TOPOGRAPHIC DIVISION