

7489 1/4 NE (STELL ROCK)

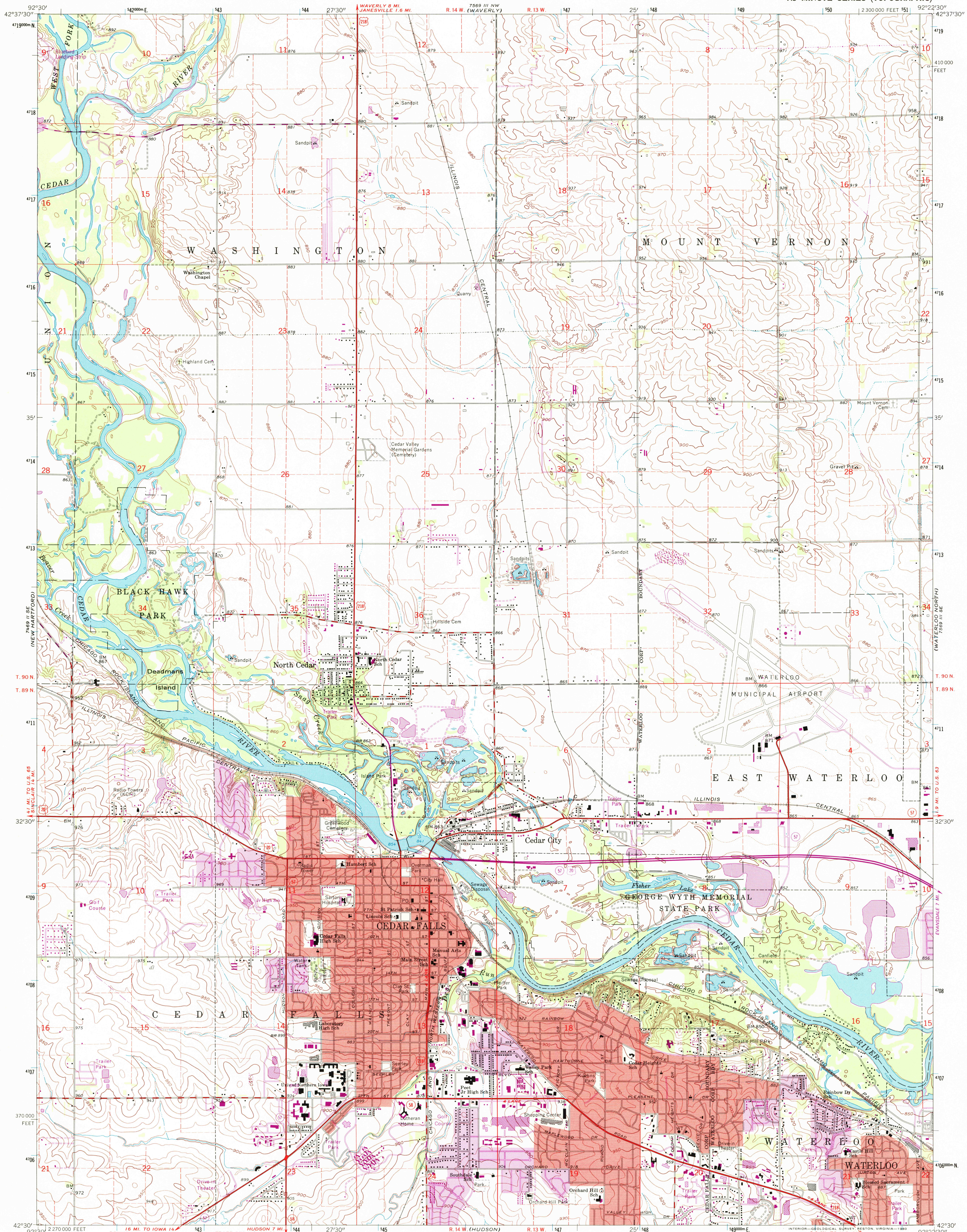


U.S. DEPARTMENT OF THE INTERIOR  
U.S. GEOLOGICAL SURVEY

STATE OF IOWA

CEDAR FALLS QUADRANGLE  
IOWA—BLACK HAWK CO.  
7.5 MINUTE SERIES (TOPOGRAPHIC)

7569 1/4 NE (DEVER)



Mapped, edited, and published by the Geological Survey

Control by USGS and USC&GS

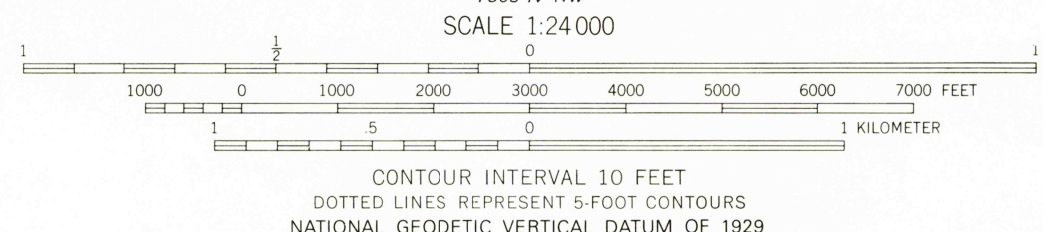
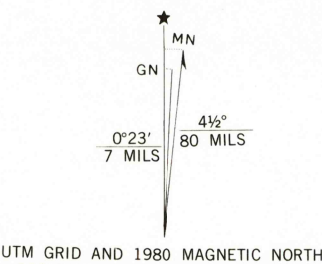
Topography by photogrammetric methods from aerial photographs taken 1958 and 1963. Field checked 1963

Polyconic projection. 1927 North American datum. 10,000-foot grid based on Iowa coordinate system, north zone 1000-meter Universal Transverse Mercator grid ticks, zone 15, shown in blue

Red tint indicates areas in which only landmark buildings are shown. Fine red dashed lines indicate selected fence and field lines where generally visible on aerial photographs. This information is unchecked

To place on the predicted North American Datum 1983 move the projection lines 5 meters north and 15 meters east as shown by dashed corner ticks

There may be private inholdings within the boundaries of the National or State reservations shown on this map



THIS MAP COMPLIES WITH NATIONAL MAP ACCURACY STANDARDS  
FOR SALE BY U.S. GEOLOGICAL SURVEY, DENVER, COLORADO 80225, OR RESTON, VIRGINIA 22092  
AND BY THE IOWA GEOLOGICAL SURVEY, IOWA CITY, IOWA 52240  
A FOLDER DESCRIBING TOPOGRAPHIC MAPS AND SYMBOLS IS AVAILABLE ON REQUEST

Revisions shown in purple compiled from aerial photographs taken 1972 and 1978. Map edited 1980  
This information not field checked  
Purple tint indicates extension of urban areas



ROAD CLASSIFICATION	
Heavy-duty	Light-duty
Medium-duty	Unimproved dirt
U.S. Route	State Route

CEDAR FALLS, IOWA  
N4230—W9222.5/7.5

1963  
PHOTOREVISED 1972 AND 1980  
DMA 7569 III SW—SERIES V876

RECEIVED  
AUG 3 1 2002

USGS MWJ  
HISTORICAL MAP ARCHIVES

