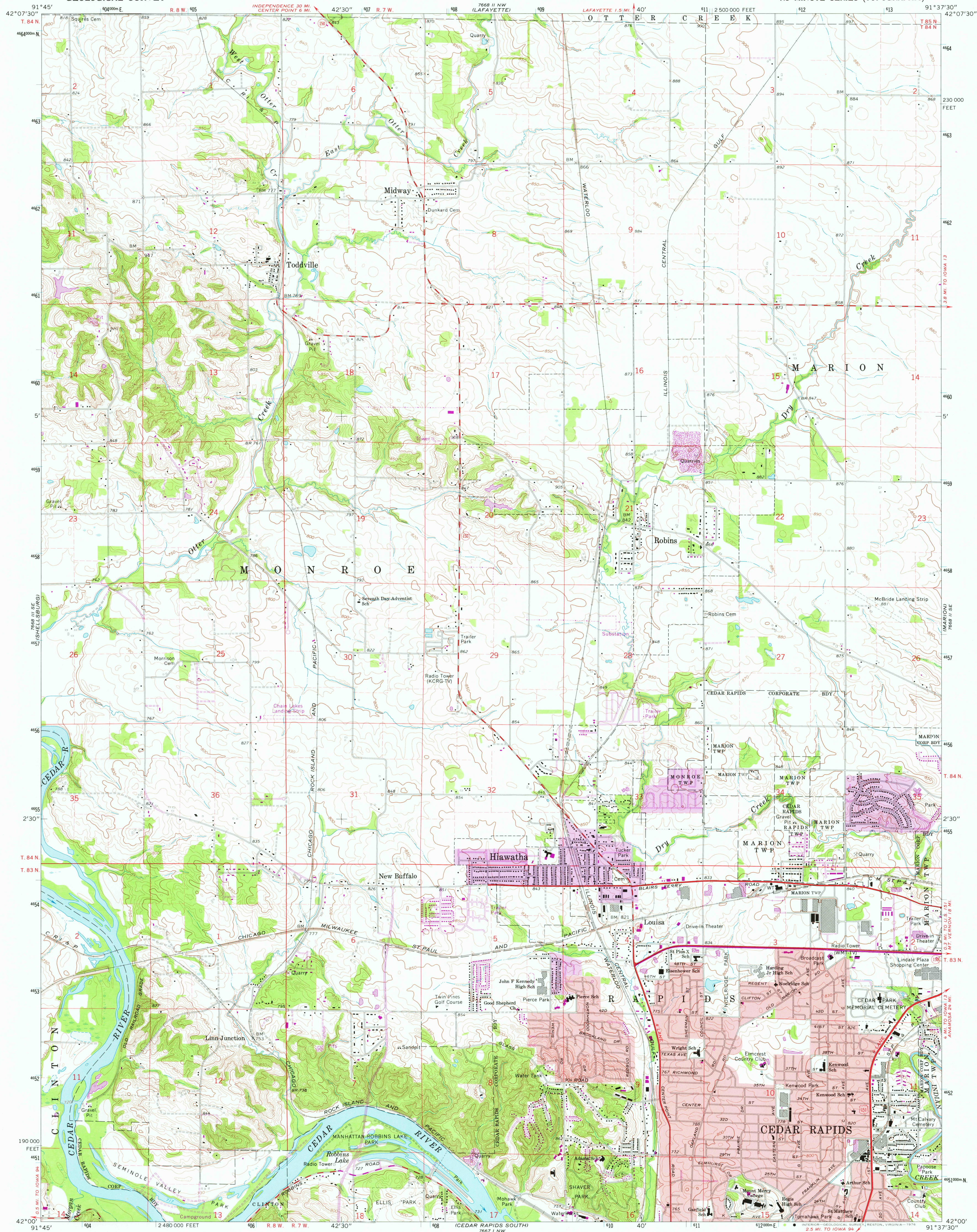


UNITED STATES  
DEPARTMENT OF THE INTERIOR  
GEOLOGICAL SURVEY

CEDAR RAPIDS NORTH QUADRANGLE  
IOWA—LINN CO.  
7.5 MINUTE SERIES (TOPOGRAPHIC)



Maped, edited, and published by the Geological Survey

Control by USGS, USC&GS, and Iowa Geodetic Survey

Topography by photogrammetric methods from aerial photographs taken 1965. Field checked 1967

Polyconic projection. 1927 North American datum

10,000-foot grid based on Iowa coordinate system, north zone

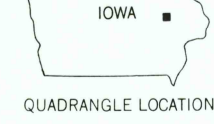
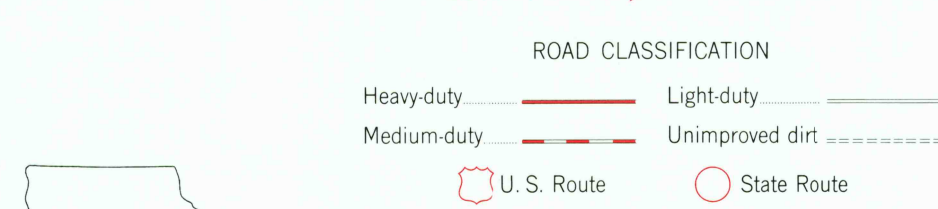
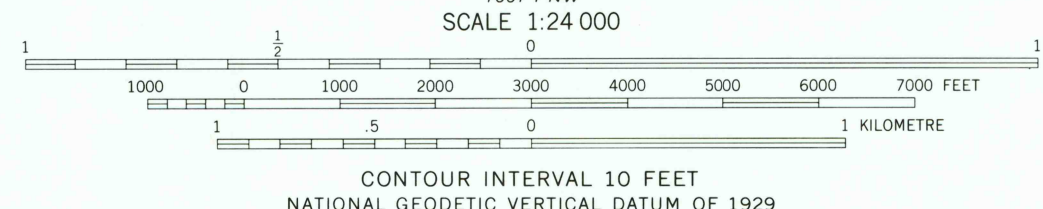
1000-metre Universal Transverse Mercator grid ticks, zone 15, shown in blue

Red tint indicates areas in which only landmark buildings are shown

Fine red dashed lines indicate selected fence and field lines where generally visible on aerial photographs. This information is unchecked

Revisions shown in purple compiled from aerial photographs taken 1975. This information not field checked

Purple tint indicates extension of urban areas



CEDAR RAPIDS NORTH, IOWA  
N4200—W9137.5/7.5

USGS  
Historical File  
Topographic Division

1967  
PHOTOREVISED 1975  
AMS 7668 II SW—SERIES V876

APR 12 1977

3150