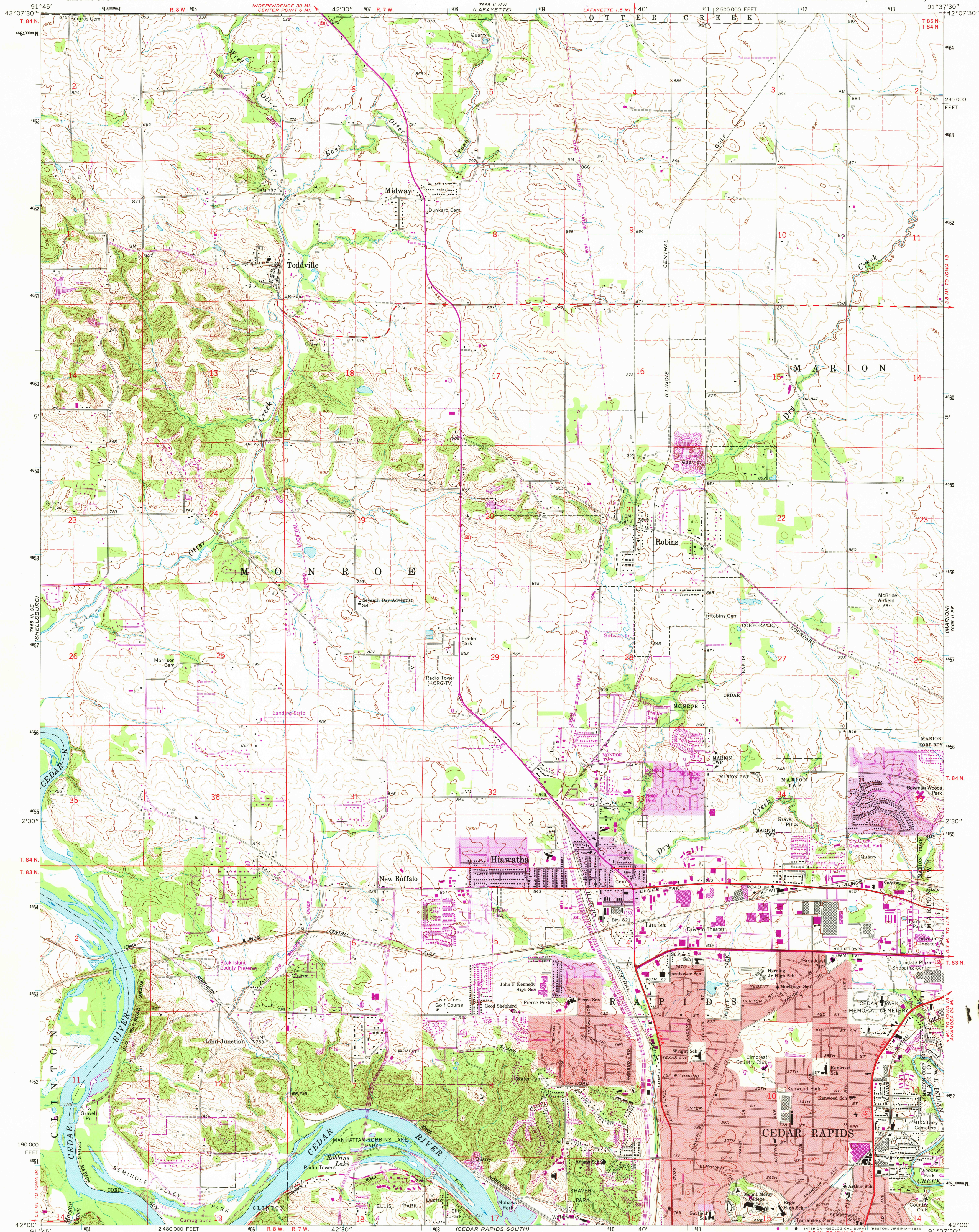
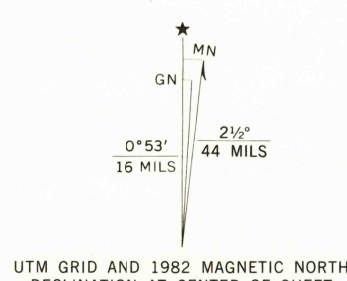


UNITED STATES  
DEPARTMENT OF THE INTERIOR  
GEOLOGICAL SURVEY

CEDAR RAPIDS NORTH QUADRANGLE  
IOWA—LINN CO.  
7.5 MINUTE SERIES (TOPOGRAPHIC)



Mapped, edited, and published by the Geological Survey  
Control by USGS, NOS/NOAA, and Iowa Geodetic Survey  
Topography by photogrammetric methods from aerial photographs  
taken 1965. Field checked 1967  
Polyconic projection. 10,000-foot grid ticks based on Iowa coordinate  
system, north zone. 1000-meter Universal Transverse Mercator grid  
ticks, zone 15, shown in blue. 1927 North American Datum  
To place on the predicted North American Datum 1983 move the  
projection lines 4 meters north and 14 meters east as shown by  
dashed corner ticks  
Fine red dashed lines indicate selected fence and field lines where  
generally visible on aerial photographs. This information is unchecked  
Red tint indicates areas in which only landmark buildings are shown



SCALE 1:24 000  
CONTOUR INTERVAL 10 FEET  
NATIONAL GEODETIC VERTICAL DATUM OF 1929  
THIS MAP COMPLIES WITH NATIONAL MAP ACCURACY STANDARDS  
FOR SALE BY U. S. GEOLOGICAL SURVEY, DENVER, COLORADO 80225, OR RESTON, VIRGINIA 22092  
AND BY THE IOWA GEOLOGICAL SURVEY, IOWA CITY, IOWA 52240  
A FOLDER DESCRIBING TOPOGRAPHIC MAPS AND SYMBOLS IS AVAILABLE ON REQUEST

ROAD CLASSIFICATION  
Primary highway, hard surface  
Secondary highway, hard surface  
Unimproved road  
Interstate Route  
U. S. Route  
State Route  
Cedar Rapids North, Iowa  
N4200—W9137.5/7.5  
1967  
PHOTOREVISED 1982  
DMA 7668 II SW—SERIES Y876

