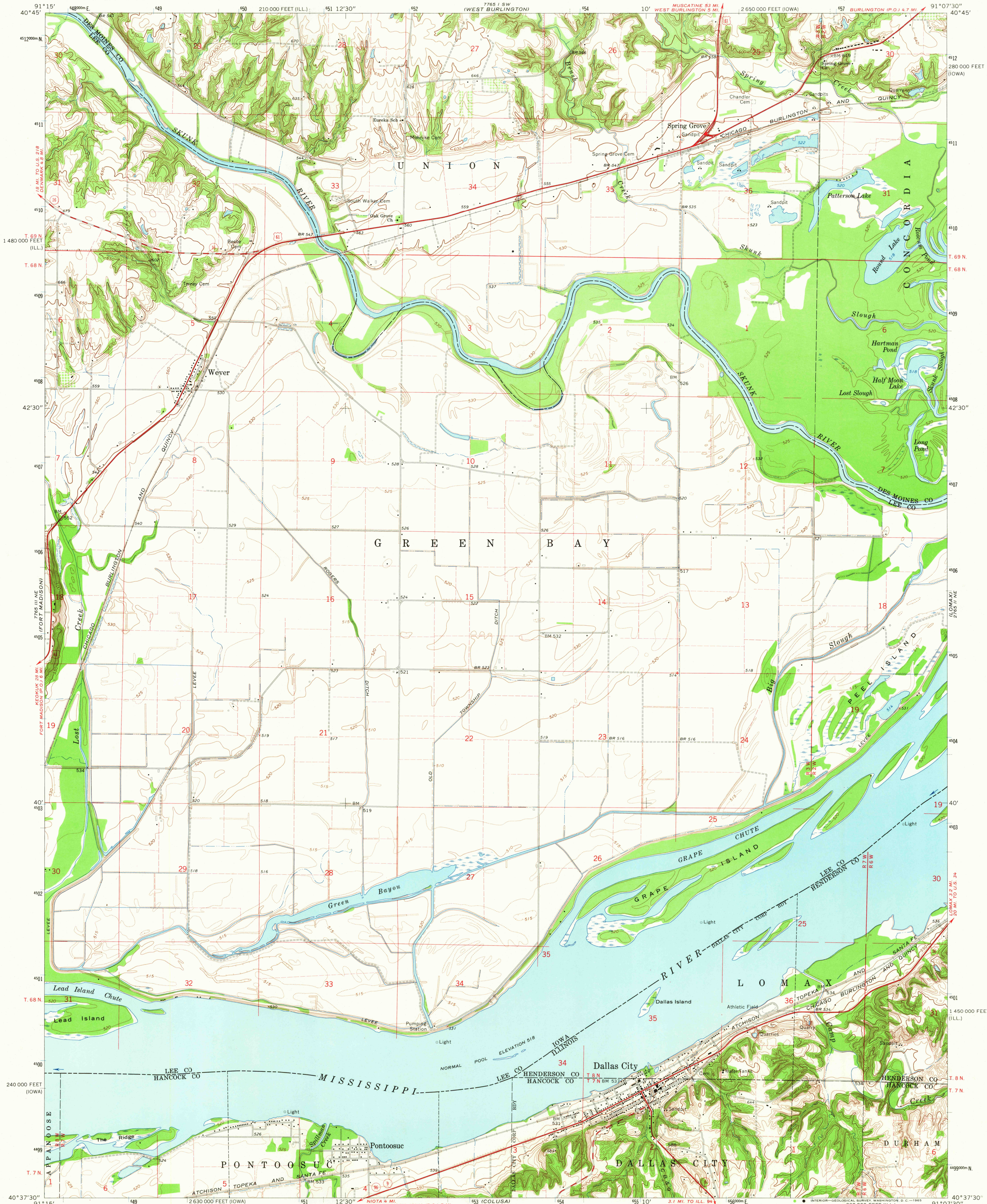
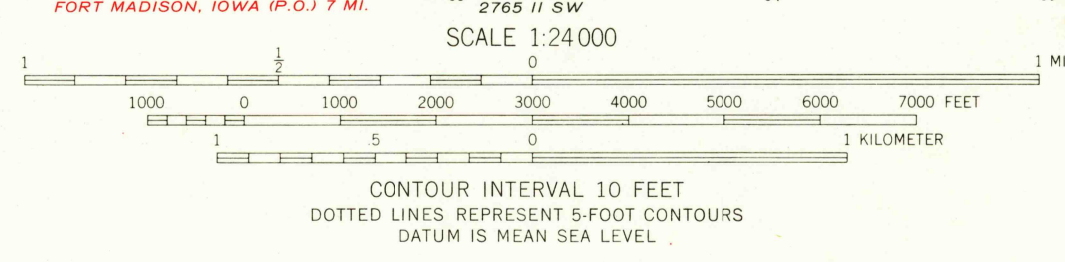


UNITED STATES
DEPARTMENT OF THE INTERIOR
GEOLOGICAL SURVEY

DALLAS CITY QUADRANGLE
IOWA-ILLINOIS
7.5 MINUTE SERIES (TOPOGRAPHIC)
NW 1/4 LOMAX 15' QUADRANGLE



Mapped, edited, and published by the Geological Survey
Control by USGS and USC&GS
Topography by photogrammetric methods from aerial
photographs taken 1962 and planimetric surveys 1964
Polyconic projection. 1927 North American datum
10,000-foot grids based on Iowa coordinate system, south zone
and Illinois coordinate system, west zone
1000-meter Universal Transverse Mercator grid ticks,
zone 15, shown in blue
Fine red dashed lines indicate selected fence and field lines where
generally visible on aerial photographs. This information is unchecked



THIS MAP COMPLIES WITH NATIONAL MAP ACCURACY STANDARDS
FOR SALE BY U.S. GEOLOGICAL SURVEY, DENVER, COLORADO 80225 OR WASHINGTON, D. C. 20242.
THE IOWA GEOLOGICAL SURVEY, IOWA CITY, IOWA,
AND STATE GEOLOGICAL SURVEY, URBANA, ILLINOIS
A FOLDER DESCRIBING TOPOGRAPHIC MAPS AND SYMBOLS IS AVAILABLE ON REQUEST



ROAD CLASSIFICATION

Heavy-duty	Light-duty
Medium-duty	Unimproved dirt
U.S. Route	State Route

DALLAS CITY, IOWA-ILL.
NW 1/4 LOMAX 15' QUADRANGLE
N4037.5-W9107.5/7.5
1964
AMS 7765 II NW-SERIES V876
U.S.G.S. FILE COPY
TOPOGRAPHIC DIVISION

JUL 22 1965