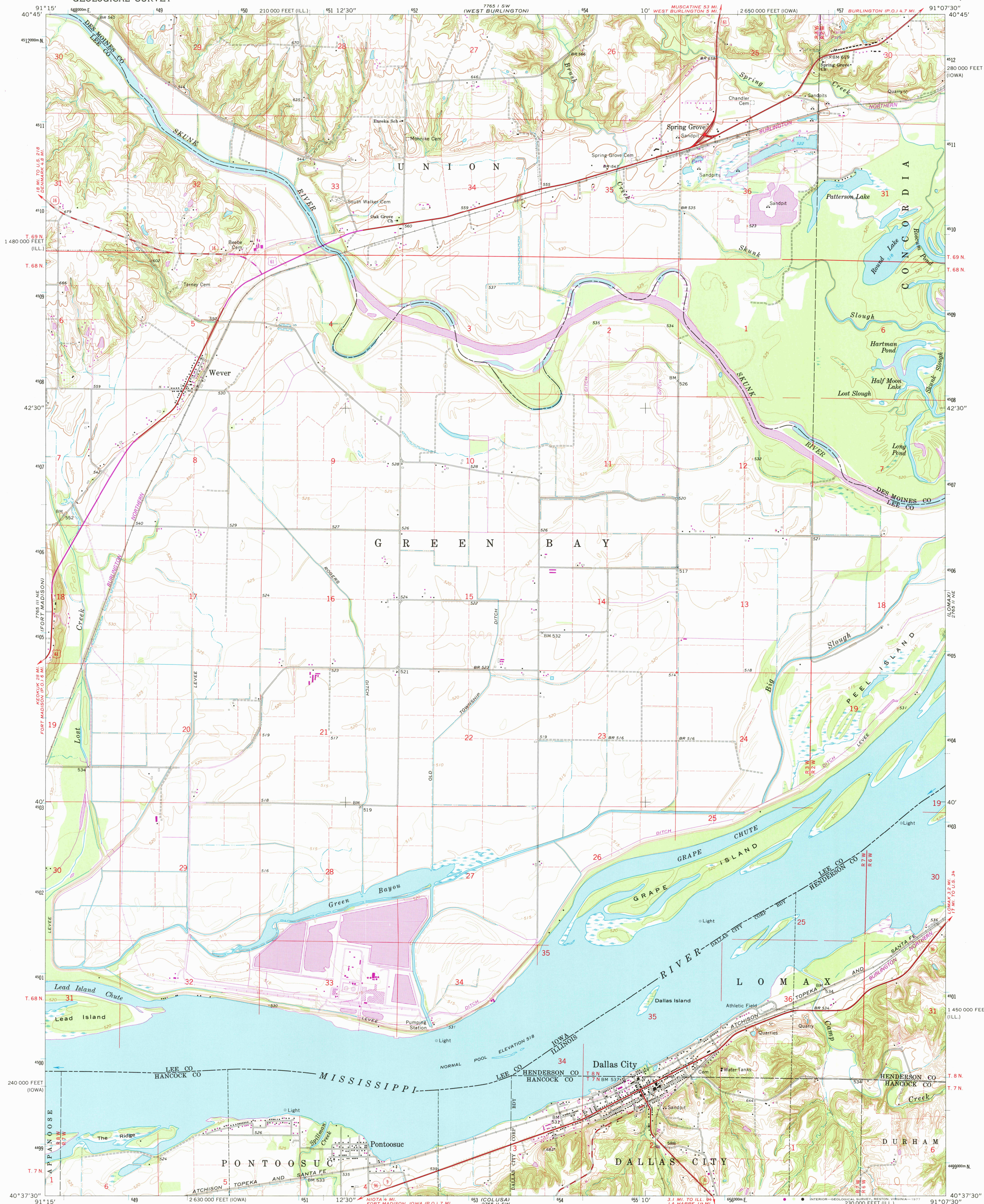


UNITED STATES  
DEPARTMENT OF THE INTERIOR  
GEOLOGICAL SURVEY

DALLAS CITY QUADRANGLE  
IOWA-ILLINOIS  
7.5 MINUTE SERIES (TOPOGRAPHIC)



Mapped, edited, and published by the Geological Survey

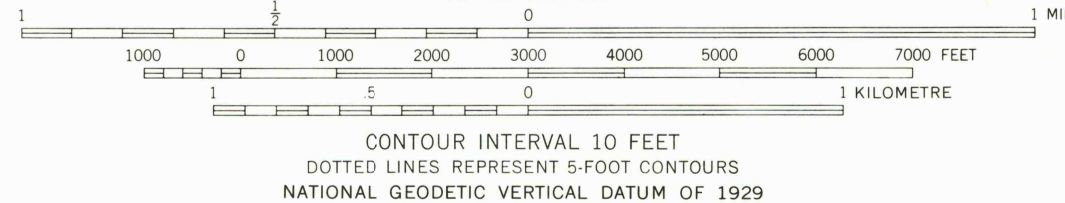
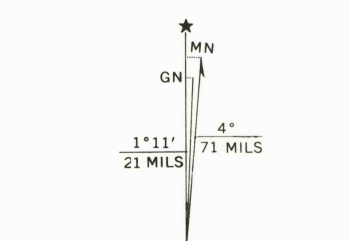
Control by USGS and USC&GS

Topography by photogrammetric methods from aerial photographs taken 1962 and planimetric surveys 1964

Polyconic projection. 1927 North American datum  
10,000-foot grids based on Iowa coordinate system, south zone  
and Illinois coordinate system, west zone  
1000-metre Universal Transverse Mercator grid ticks,  
zone 15, shown in blue

Fine red dashed lines indicate selected fence and field lines where  
generally visible on aerial photographs. This information is unchecked

Revisions shown in purple compiled from aerial photographs  
taken 1975. This information not field checked



THIS MAP COMPLIES WITH NATIONAL MAP ACCURACY STANDARDS  
FOR SALE BY U. S. GEOLOGICAL SURVEY, DENVER, COLORADO 80225, OR RESTON, VIRGINIA 22092  
THE IOWA GEOLOGICAL SURVEY, IOWA CITY, IOWA 52240,  
AND STATE GEOLOGICAL SURVEY, URBANA, ILLINOIS 61801  
A FOLDER DESCRIBING TOPOGRAPHIC MAPS AND SYMBOLS IS AVAILABLE ON REQUEST



ROAD CLASSIFICATION  
Heavy-duty ——— Light-duty ———  
Medium-duty ——— Unimproved dirt ———  
U. S. Route ——— State Route ———

USGS  
Historical File  
Topographic Division

DALLAS CITY, IOWA-ILL.  
N4037.5-W9107.5/7.5  
1964  
PHOTOREVISED 1975  
AMS 7765 II NW-SERIES V876

2800  
MAR 22 1978