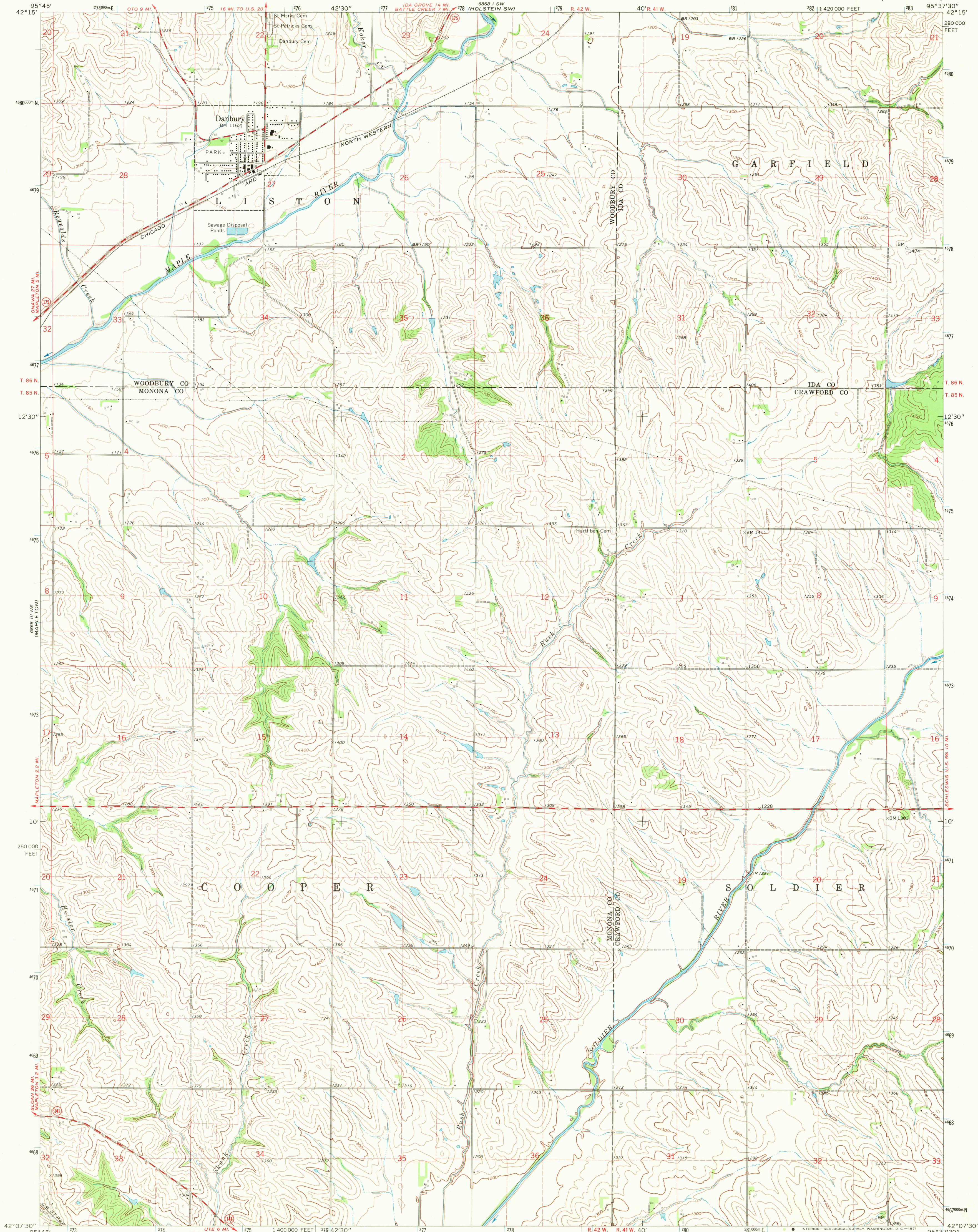


CORRECTIONVILLE SE

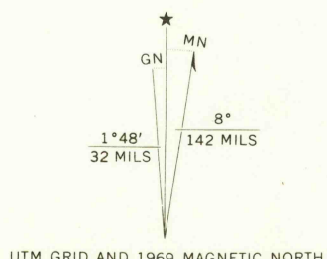
UNITED STATES
DEPARTMENT OF THE INTERIOR
GEOLOGICAL SURVEY

DANBURY QUADRANGLE
IOWA
7.5 MINUTE SERIES (TOPOGRAPHIC)

BATTLE CREEK SE

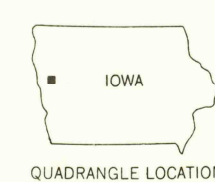


Mapped, edited, and published by the Geological Survey as part of the Department of the Interior program for the development of the Missouri River Basin. Control by USGS and USC&GS. Topography by photogrammetric methods from aerial photographs taken 1968. Field checked 1969. Polyconic projection. 1927 North American datum. 10,000-foot grid based on Iowa coordinate system, north zone. 1000-meter Universal Transverse Mercator grid ticks, zone 15, shown in blue. Fine red dashed lines indicate selected fence and field lines where generally visible on aerial photographs. This information is unchecked.



CONTOUR INTERVAL 20 FEET
DATUM IS MEAN SEA LEVEL

THIS MAP COMPLIES WITH NATIONAL MAP ACCURACY STANDARDS
FOR SALE BY U.S. GEOLOGICAL SURVEY, DENVER, COLORADO 80225, OR WASHINGTON, D.C. 20242
AND BY THE IOWA GEOLOGICAL SURVEY, IOWA CITY, IOWA 52240
A FOLDER DESCRIBING TOPOGRAPHIC MAPS AND SYMBOLS IS AVAILABLE ON REQUEST



ROAD CLASSIFICATION
Secondary highway, all weather, light-duty road, all weather, hard surface.
Unimproved road, fair or dry weather.
State Route

USGS
HISTORICAL FILE
TOPOGRAPHIC DIVISION

DANBURY, IOWA
N4207.5—W9537.5/7.5

1969
AMS 6868 II NW—SERIES V876

2545
AUG 25 1971