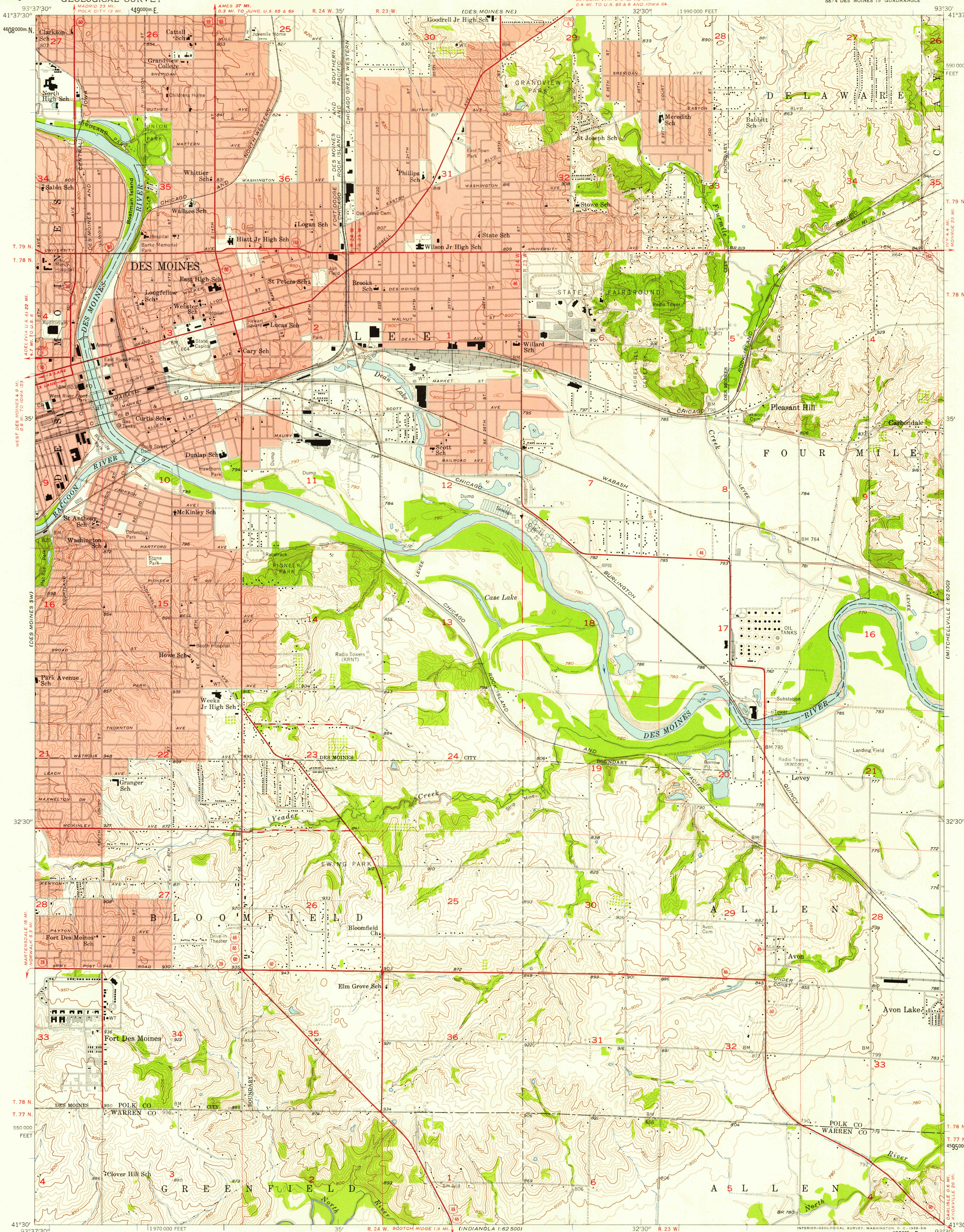


UNITED STATES  
DEPARTMENT OF THE INTERIOR  
GEOLOGICAL SURVEY

DES MOINES SE QUADRANGLE  
IOWA  
7.5 MINUTE SERIES (TOPOGRAPHIC)  
SE 1/4 DES MOINES 15' QUADRANGLE

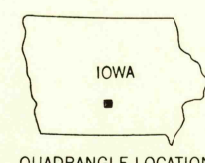


Mapped, edited, and published by the Geological Survey  
in cooperation with Polk County and City of Des Moines  
Control by USGS, USC&GS, and Iowa Geodetic Survey  
Topography from aerial photographs by Kelsh plotter  
Aerial photographs taken 1956. Field check 1956  
Polyconic projection. 1927 North American datum  
10,000-foot grid based on Iowa coordinate system, south zone  
1000-meter Universal Transverse Mercator grid ticks,  
zone 15, shown in blue  
Red tint indicates areas in which only  
landmark buildings are shown

TRUE NORTH  
MAGNETIC NORTH  
APPROXIMATE MEAN  
DECLINATION, 1956

SCALE 1:24000  
1000 0 1000 2000 3000 4000 5000 6000 7000 FEET  
1 5 10 20 30 40 50 60 70 80 90 100 METERS  
CONTOUR INTERVAL 10 FEET  
DOTTED LINES REPRESENT 5-FOOT CONTOURS  
DATUM IS MEAN SEA LEVEL  
THIS MAP COMPLIES WITH NATIONAL MAP ACCURACY STANDARDS  
FOR SALE BY U. S. GEOLOGICAL SURVEY, DENVER 2, COLORADO OR WASHINGTON 25, D. C.  
AND BY THE IOWA GEOLOGICAL SURVEY, IOWA CITY, IOWA  
A FOLDER DESCRIBING TOPOGRAPHIC MAPS AND SYMBOLS IS AVAILABLE ON REQUEST

USGS  
Historical File  
Topographic Division



ROAD CLASSIFICATION  
Heavy-duty ——— Light-duty ———  
Medium-duty ——— Unimproved dirt ———  
U. S. Route ——— State Route ———

DES MOINES SE, IOWA  
SE 1/4 DES MOINES 15' QUADRANGLE  
N 4130—W 9330 17.5

1956

U.S.G.S.  
FILE COPY  
TOPOGRAPHIC DIVISION

MAR - 6 1958

3435