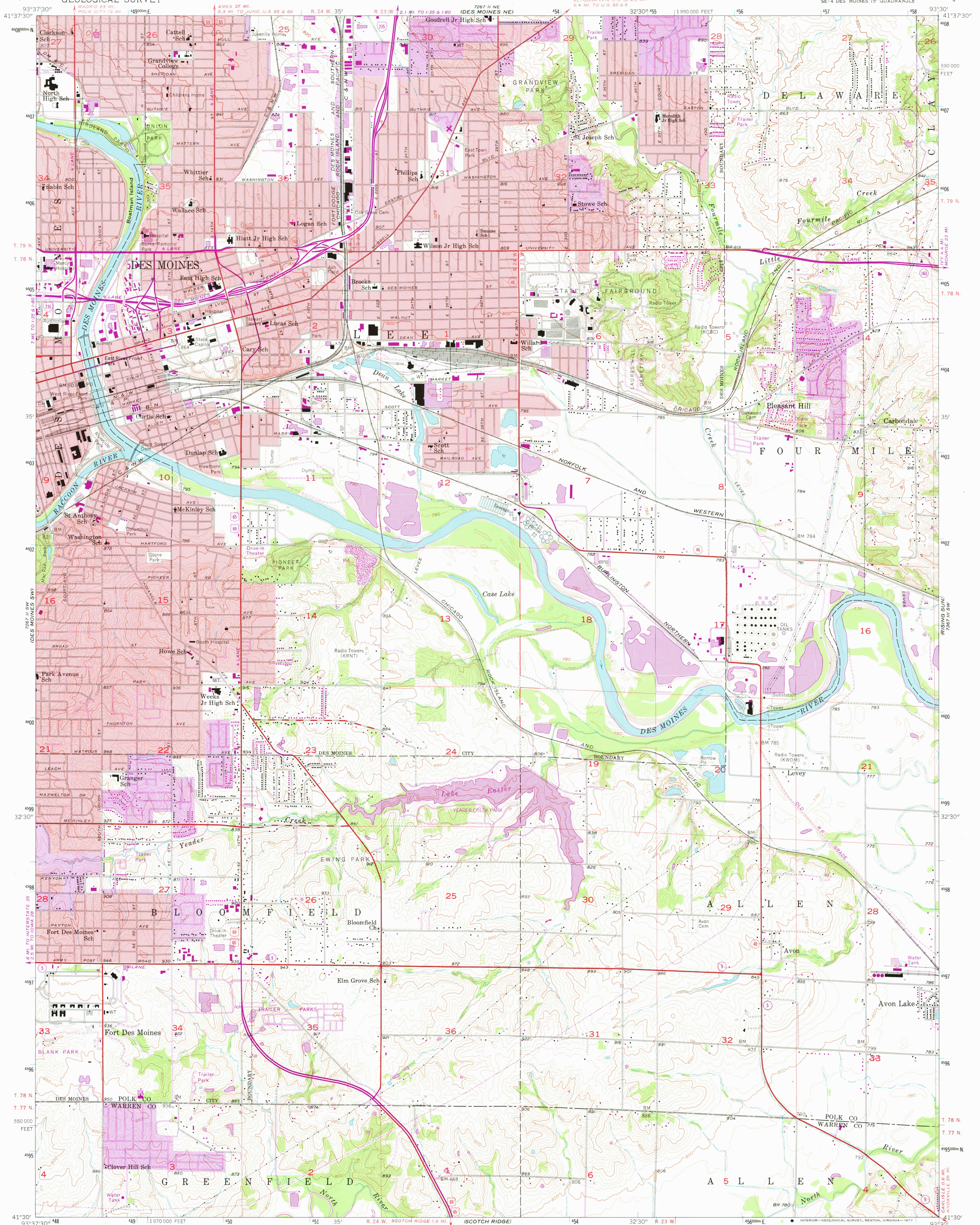


UNITED STATES
DEPARTMENT OF THE INTERIOR
GEOLOGICAL SURVEY

DES MOINES SE QUADRANGLE
IOWA
7.5 MINUTE SERIES (TOPOGRAPHIC)
SE 4 DES MOINES 15' QUADRANGLE



Maped, edited, and published by the Geological Survey
in cooperation with Polk County and City of Des Moines

Control by USGS, USC&GS, and Iowa Geodetic Survey

Topography from aerial photographs by Kelsch plotter

Aerial photographs taken 1956. Field check 1956

Polyconic projection, 1927 North American datum

10,000-foot grid based on Iowa coordinate system, south zone

1000-meter Universal Transverse Mercator grid ticks,

zone 15, shown in blue

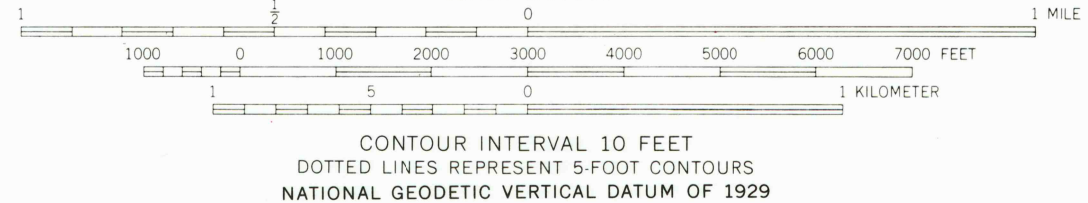
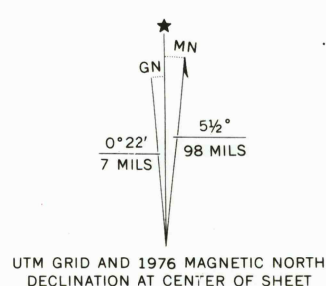
Red tint indicates areas in which only

landmark buildings are shown

Revisions shown in purple compiled from aerial photographs

taken 1967, 1971, and 1976. This information not field checked

Purple tint indicates extension of urban areas



THIS MAP COMPLIES WITH NATIONAL MAP ACCURACY STANDARDS
FOR SALE BY U.S. GEOLOGICAL SURVEY, DENVER, COLORADO 80225, OR RESTON, VIRGINIA 22092
AND BY THE IOWA GEOLOGICAL SURVEY, IOWA CITY, IOWA 52240
A FOLDER DESCRIBING TOPOGRAPHIC MAPS AND SYMBOLS IS AVAILABLE ON REQUEST



ROAD CLASSIFICATION
Heavy-duty ——— Light-duty ———
Medium-duty ——— Unimproved dirt ———

Interstate Route U.S. Route State Route

USGS
Historical File
Topographic Division

DES MOINES SE, IOWA
SE 4 DES MOINES 15' QUADRANGLE
N4130—W9330/7.5

1956

PHOTOREVISED 1967, 1971, AND 1976

AMS 7267 II SE—SERIES V876

FEB 21 1978
3,000