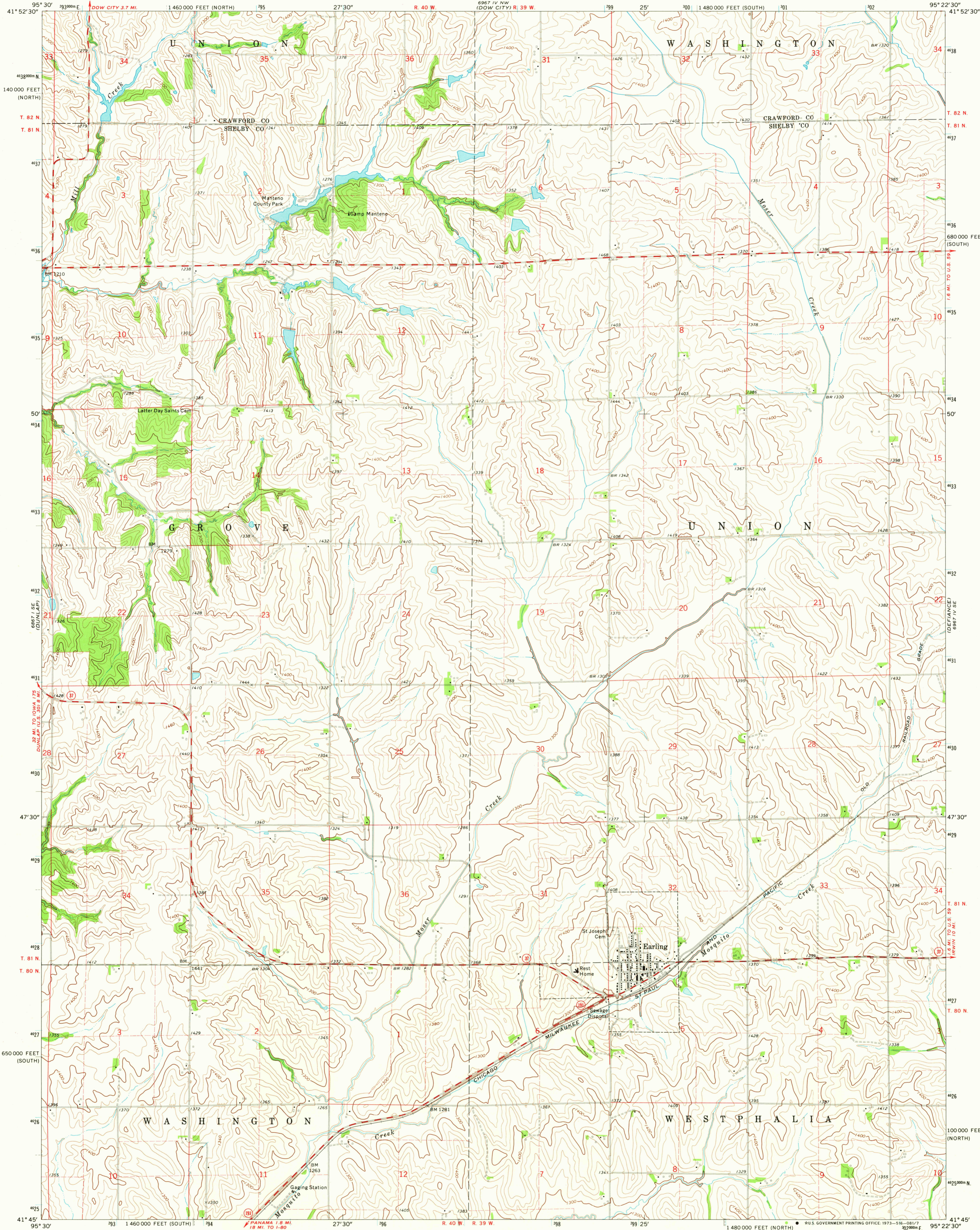
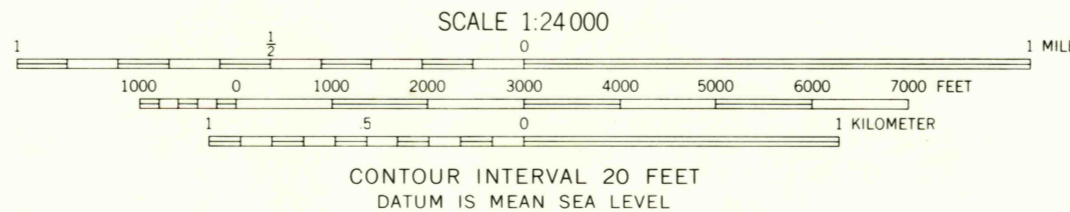


UNITED STATES
DEPARTMENT OF THE INTERIOR
GEOLOGICAL SURVEY

EARLING QUADRANGLE
IOWA
7.5 MINUTE SERIES (TOPOGRAPHIC)



Mapped, edited, and published by the Geological Survey as part of the Department of the Interior program for the development of the Missouri River Basin Control by USGS and USC&GS
Topography by photogrammetric methods from aerial photographs taken 1971. Field checked 1971
Polyconic projection. 1927 North American datum 10,000-foot grids based on Iowa coordinate system, south and north zones
1000-meter Universal Transverse Mercator grid ticks, zone 15, shown in blue
Fine red dashed lines indicate selected fence and field lines where generally visible on aerial photographs. This information is unchecked



THIS MAP COMPLIES WITH NATIONAL MAP ACCURACY STANDARDS FOR SALE BY U.S. GEOLOGICAL SURVEY, DENVER, COLORADO 80225, OR WASHINGTON, D. C. 20242 AND BY THE IOWA GEOLOGICAL SURVEY, IOWA CITY, IOWA 52240 A FOLDER DESCRIBING TOPOGRAPHIC MAPS AND SYMBOLS IS AVAILABLE ON REQUEST

ROAD CLASSIFICATION
Primary highway, hard surface
Secondary highway, hard surface
Unimproved road
Light-duty road, hard or improved surface
Interstate Route
U. S. Route
State Route



AUG 3 1973
EARLING, IOWA
N4145-W9522.5/7.5

1971
AMS 6967 IV SW-SERIES V876

Hoer
2500
50 p.m.