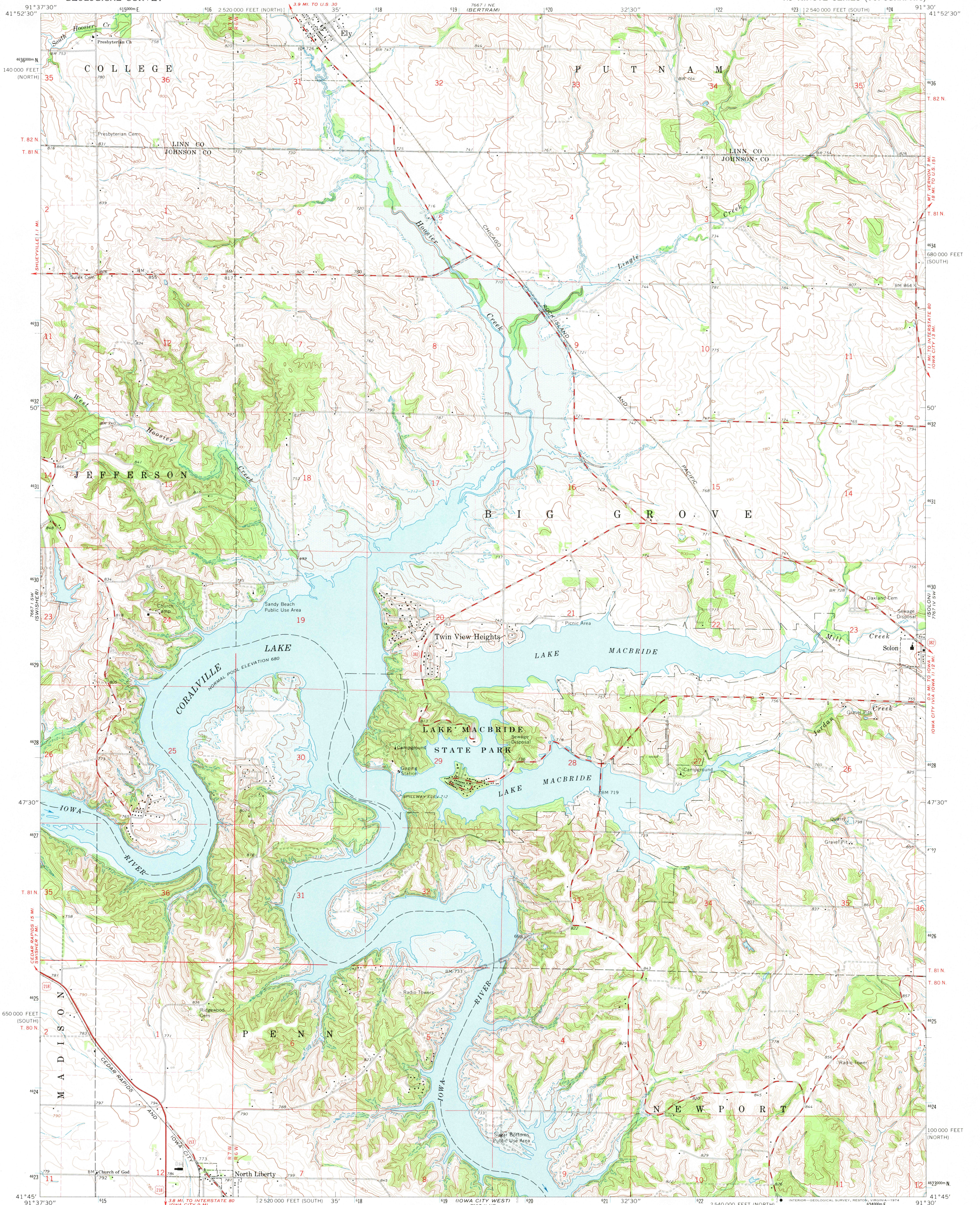


UNITED STATES
DEPARTMENT OF THE INTERIOR
GEOLOGICAL SURVEY

ELY QUADRANGLE
IOWA
7.5 MINUTE SERIES (TOPOGRAPHIC)



Mapped, edited, and published by the Geological Survey

Control by USGS, USC&GS, and Iowa Geodetic Survey

Topography by photogrammetric methods from aerial

photographs taken 1965 and planetable surveys 1968

Polyconic projection. 1927 North American datum

10,000-foot grids based on Iowa coordinate system, south and north zones

1000-meter Universal Transverse Mercator grid ticks,

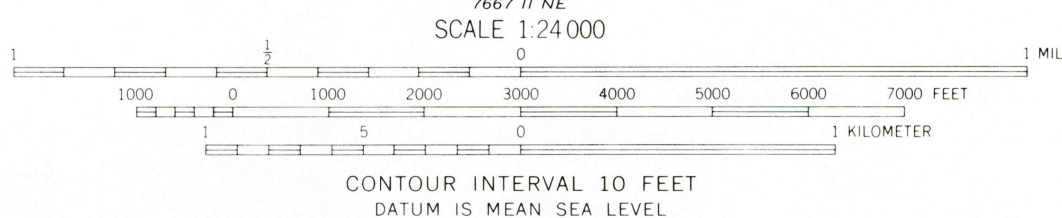
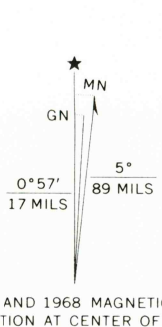
zone 15, shown in blue

Areas covered by dashed light-blue pattern

are subject to controlled inundation

Fine red dashed lines indicate selected fence and field lines where

generally visible on aerial photographs. This information is unchecked



SCALE 1:24,000

CONTOUR INTERVAL 10 FEET

DATUM IS MEAN SEA LEVEL

THIS MAP COMPLIES WITH NATIONAL MAP ACCURACY STANDARDS
FOR SALE BY U.S. GEOLOGICAL SURVEY, DENVER, COLORADO 80225 OR RESTON, VIRGINIA 22092
AND BY THE IOWA GEOLOGICAL SURVEY, IOWA CITY, IOWA 52240
A FOLDER DESCRIBING TOPOGRAPHIC MAPS AND SYMBOLS IS AVAILABLE ON REQUEST



QUADRANGLE LOCATION

ROAD CLASSIFICATION	
Primary highway, all weather, hard surface	Light-duty road, all weather, improved surface
Secondary highway, all weather, hard surface	Unimproved road, fair or dry weather
U. S. Route	State Route

USGS
Historical File
Topographic Division

ELY, IOWA
N4145—W9130/7.5
1968

AMS 7667 I SE—SERIES V876

MAR 28 1974

6560