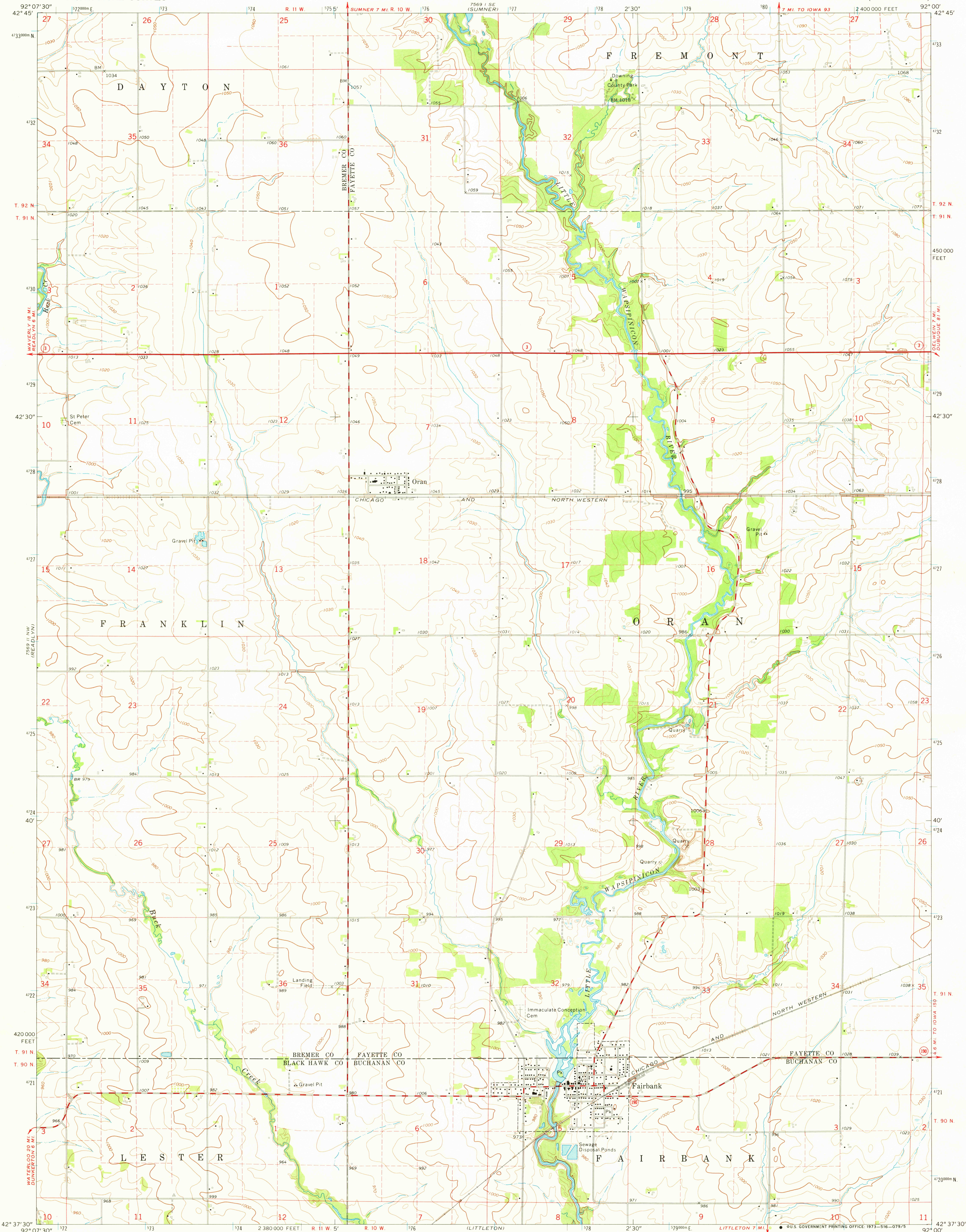


UNITED STATES
DEPARTMENT OF THE INTERIOR
GEOLOGICAL SURVEY

FAIRBANK QUADRANGLE
IOWA
7.5 MINUTE SERIES (TOPOGRAPHIC)



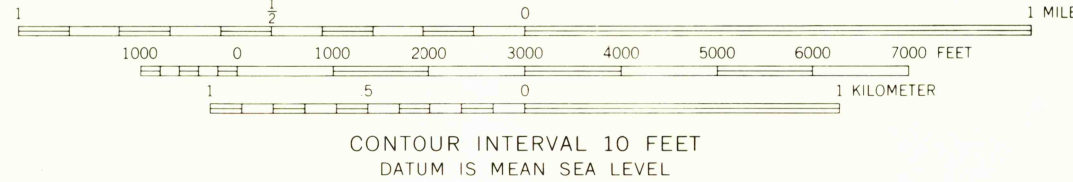
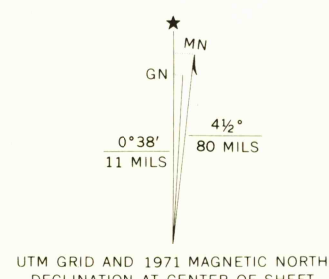
Mapped, edited, and published by the Geological Survey

Control by USGS and USC&GS

Topography by photogrammetric methods from aerial photographs taken 1967. Field checked 1971

Polyconic projection. 1927 North American datum
10,000-foot grid based on Iowa coordinate system, north zone
1000-meter Universal Transverse Mercator grid ticks,
zone 15, shown in blue

Fine red dashed lines indicate selected fence and field lines where
generally visible on aerial photographs. This information is unchecked



ROAD CLASSIFICATION	
Primary highway, hard surface	Light-duty road, hard or improved surface
Secondary highway, hard surface	Unimproved road
Interstate Route	U. S. Route
	State Route

THIS MAP COMPLIES WITH NATIONAL MAP ACCURACY STANDARDS
FOR SALE BY U. S. GEOLOGICAL SURVEY, DENVER, COLORADO 80225, OR WASHINGTON, D. C. 20242
AND BY THE IOWA GEOLOGICAL SURVEY, IOWA CITY, IOWA 52240
A FOLDER DESCRIBING TOPOGRAPHIC MAPS AND SYMBOLS IS AVAILABLE ON REQUEST

FAIRBANK, IOWA
N4237.5-W9200/7.5

1971

USGS
HISTORICAL FILE
TOPOGRAPHIC DIVISION

AMS 7569 II NE-SERIES W876

MAY 18 1973