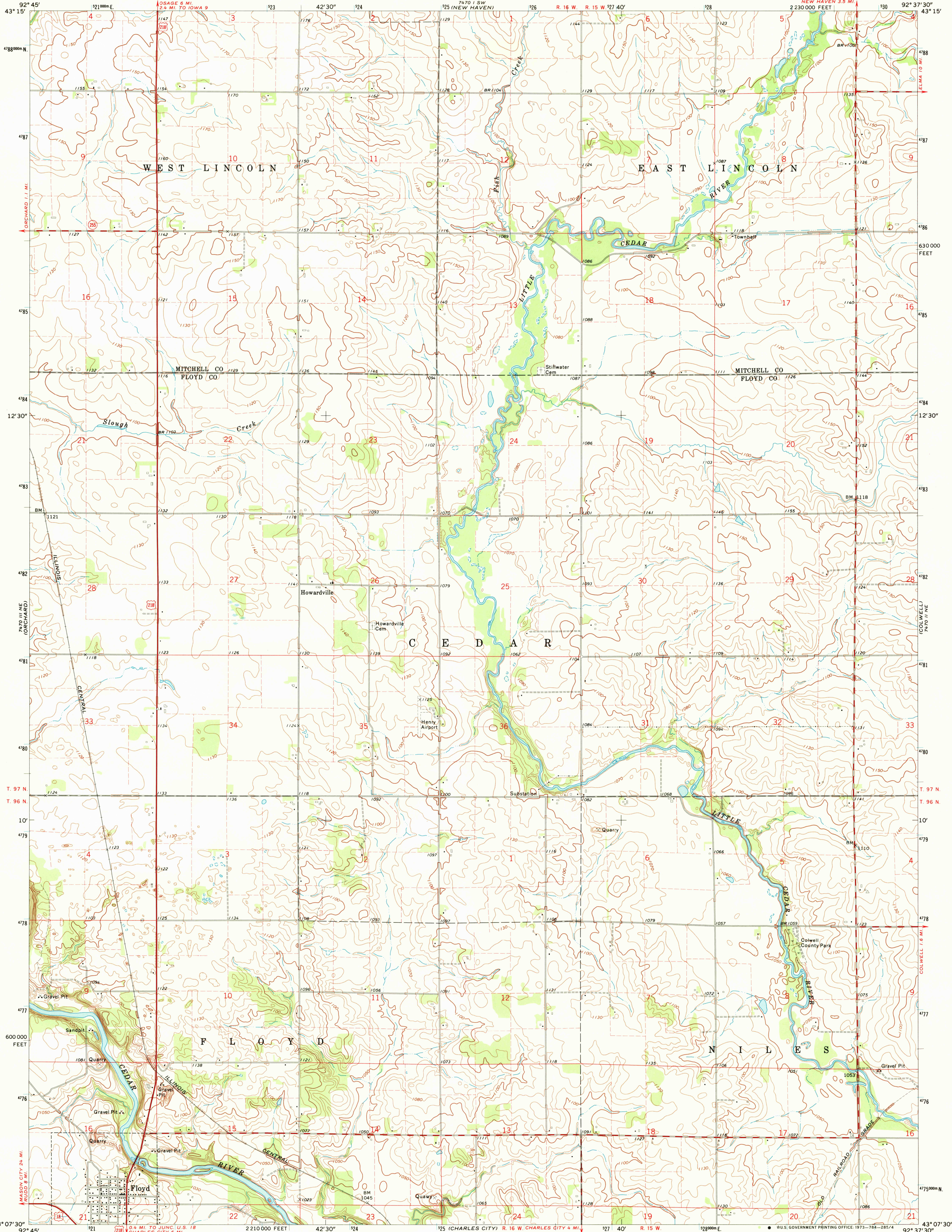


UNITED STATES  
DEPARTMENT OF THE INTERIOR  
GEOLOGICAL SURVEY

FLOYD QUADRANGLE  
IOWA  
7.5 MINUTE SERIES (TOPOGRAPHIC)



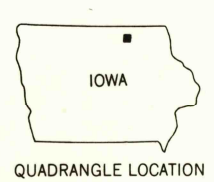
Maped, edited, and published by the Geological Survey  
Control by USGS and USC&GS  
Topography by photogrammetric methods from aerial  
photographs taken 1967. Field checked 1971  
Polyconic projection. 1927 North American datum  
10,000-foot grid based on Iowa coordinate system, north zone  
1000-meter Universal Transverse Mercator grid ticks,  
zone 15, shown in blue  
Fine red dashed lines indicate selected fence and field lines where  
generally visible on aerial photographs. This information is unchecked

UTM GRID AND 1971 MAGNETIC NORTH  
DECLINATION AT CENTER OF SHEET

SCALE 1:24 000  
CONTOUR INTERVAL 10 FEET  
DATUM IS MEAN SEA LEVEL

THIS MAP COMPLIES WITH NATIONAL MAP ACCURACY STANDARDS  
FOR SALE BY U.S. GEOLOGICAL SURVEY, DENVER, COLORADO 80225, OR WASHINGTON, D. C. 20242  
AND BY THE IOWA GEOLOGICAL SURVEY, IOWA CITY, IOWA 52240  
A FOLDER DESCRIBING TOPOGRAPHIC MAPS AND SYMBOLS IS AVAILABLE ON REQUEST

ROAD CLASSIFICATION  
Primary highway, hard surface  
Secondary highway, hard surface  
Unimproved road  
Interstate Route  
U. S. Route  
State Route  
Light-duty road, hard or improved surface  
Unimproved road  
Interstate Route  
U. S. Route  
State Route



USGS  
Metric File  
Topographic Division

13 AUG 1973  
FLOYD, IOWA  
N4307.5-W9237.5/7.5  
1971

AMS 7470 II NW-SERIES V876