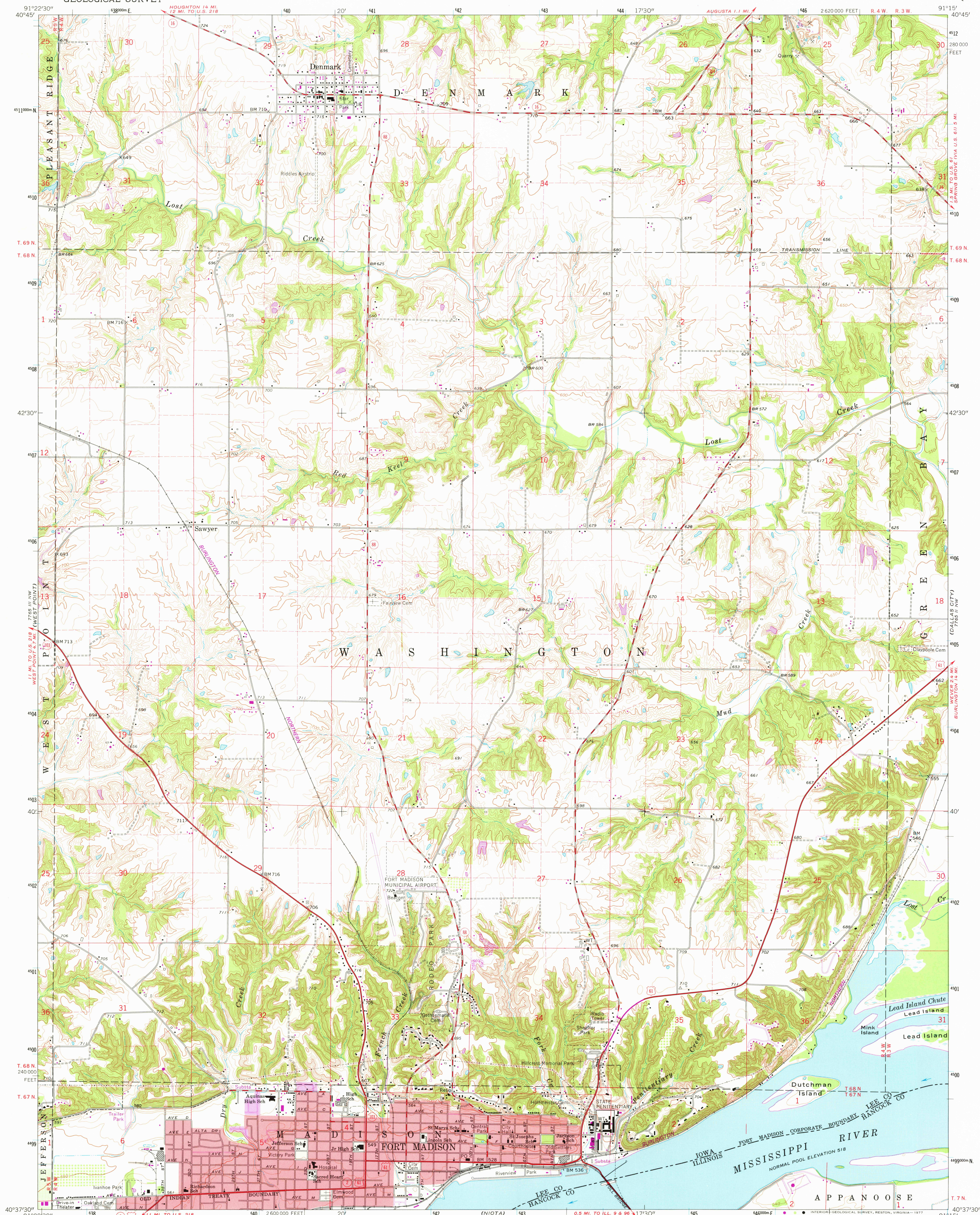


UNITED STATES  
DEPARTMENT OF THE INTERIOR  
GEOLOGICAL SURVEY

FORT MADISON QUADRANGLE  
IOWA-ILLINOIS  
7.5 MINUTE SERIES (TOPOGRAPHIC)

7765 III NW  
(WEST BURLINGTON)



Mapped, edited, and published by the Geological Survey

Control by USGS and USC&GS

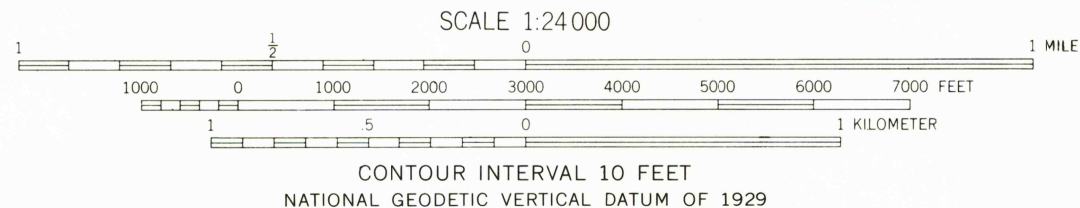
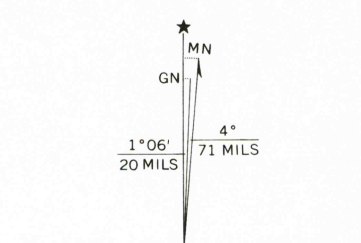
Topography by photogrammetric methods from aerial photographs taken 1962. Field checked 1964

Polyconic projection. 1927 North American datum  
10,000-foot grid based on Iowa coordinate system, south zone  
1000-meter Universal Transverse Mercator grid ticks,  
zone 15, shown in blue

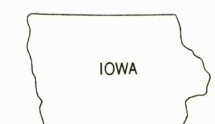
Red tint indicates area in which only landmark buildings are shown  
Fine red dashed lines indicate selected fence and field lines where  
generally visible on aerial photographs. This information is unchecked

Revisions shown in purple compiled from aerial photographs  
taken 1975. This information not field checked

Purple tint indicates extension of urban areas



THIS MAP COMPLIES WITH NATIONAL MAP ACCURACY STANDARDS  
FOR SALE BY U.S. GEOLOGICAL SURVEY, DENVER, COLORADO 80225, OR RESTON, VIRGINIA 22092  
IOWA GEOLOGICAL SURVEY, IOWA CITY, IOWA 52240  
AND STATE GEOLOGICAL SURVEY, URBANA, ILLINOIS 61801  
A FOLDER DESCRIBING TOPOGRAPHIC MAPS AND SYMBOLS IS AVAILABLE ON REQUEST



QUADRANGLE LOCATION

USGS  
Historical File  
Topographic Division

FORT MADISON, IOWA-ILL.

N4037.5-W9115/7.5

1964  
PHOTOREVISED 1975  
AMS 7765 III NE - SERIES V876

FEB 17 1978

2,680