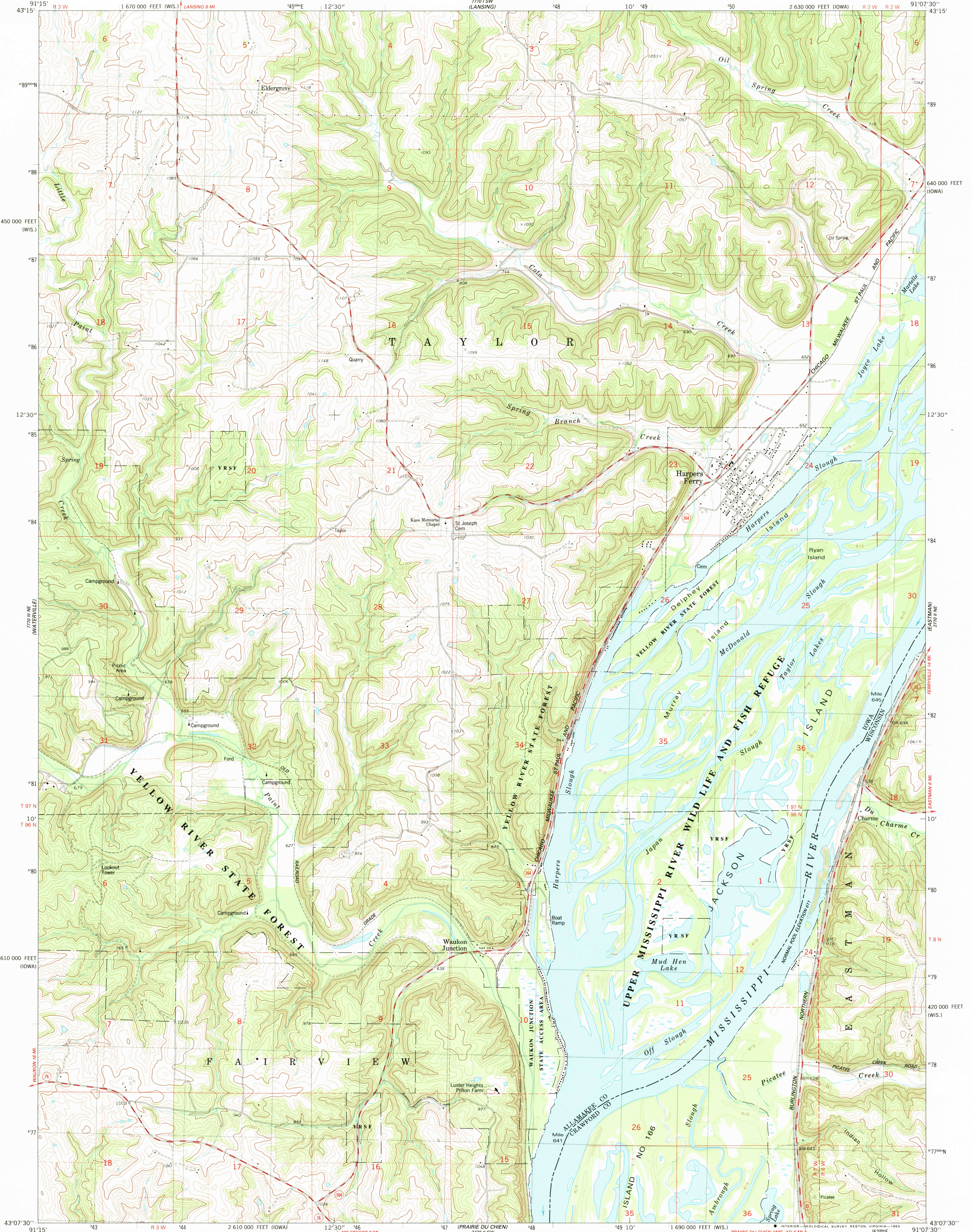
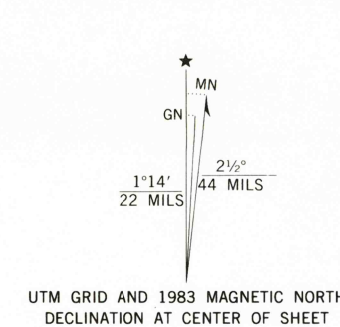


UNITED STATES
DEPARTMENT OF THE INTERIOR
GEOLOGICAL SURVEY

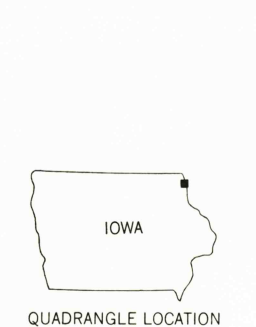
HARPERS FERRY QUADRANGLE
IOWA-WISCONSIN
7.5 MINUTE SERIES (TOPOGRAPHIC)
NW4 PRAIRIE DU CHIEN 15' QUADRANGLE



Mapped, edited, and published by the Geological Survey in cooperation with the Wisconsin Division of Highways and Wisconsin Geological and Natural History Survey
Control by USGS and NOS/NOAA
Topography by photogrammetric methods from aerial photographs taken 1965 and planetable surveys 1967
Revised from aerial photographs taken 1980-81
Field checked 1982. Map edited 1983
Projection: Iowa coordinate system, north zone (Lambert conformal conic)
10,000-foot grid ticks based on Iowa coordinate system, north zone and Wisconsin coordinate system, south zone
1000-meter Universal Transverse Mercator grid, zone 15
1927 North American Datum
To place on the predicted North American Datum 1983, move the projection lines 5 meters north and 12 meters east as shown by dashed corner ticks
There may be private inholdings within the boundaries of the National or State reservations shown on this map
Fine red dashed lines indicate selected fence and field lines where generally visible on aerial photographs. This information is unchecked



CONTOUR INTERVAL 20 FEET
DOTTED LINES REPRESENT 5-FOOT CONTOURS
NATIONAL GEODETIC VERTICAL DATUM OF 1929
THIS MAP COMPLIES WITH NATIONAL MAP ACCURACY STANDARDS
IOWA GEOLOGICAL SURVEY, DENVER, COLORADO 80225, OR RESTON, VIRGINIA 22092
IOWA GEOLOGICAL SURVEY, IOWA CITY, IOWA 52240
AND WISCONSIN GEOLOGICAL AND NATURAL HISTORY SURVEY, MADISON, WISCONSIN 53706
A FOLDER DESCRIBING TOPOGRAPHIC MAPS AND SYMBOLS IS AVAILABLE ON REQUEST



ROAD CLASSIFICATION
Primary highway, hard surface
Secondary highway, hard surface
Light duty road, hard or improved surface
Unimproved road
Interstate Route
U. S. Route
State Route
HARPERS FERRY, IOWA-WIS.
NW4 PRAIRIE DU CHIEN 15' QUADRANGLE
N4307.5-W9107.5/5.7.5
1983
DMA 7770 II NW-SERIES V876

NOV 15 1983