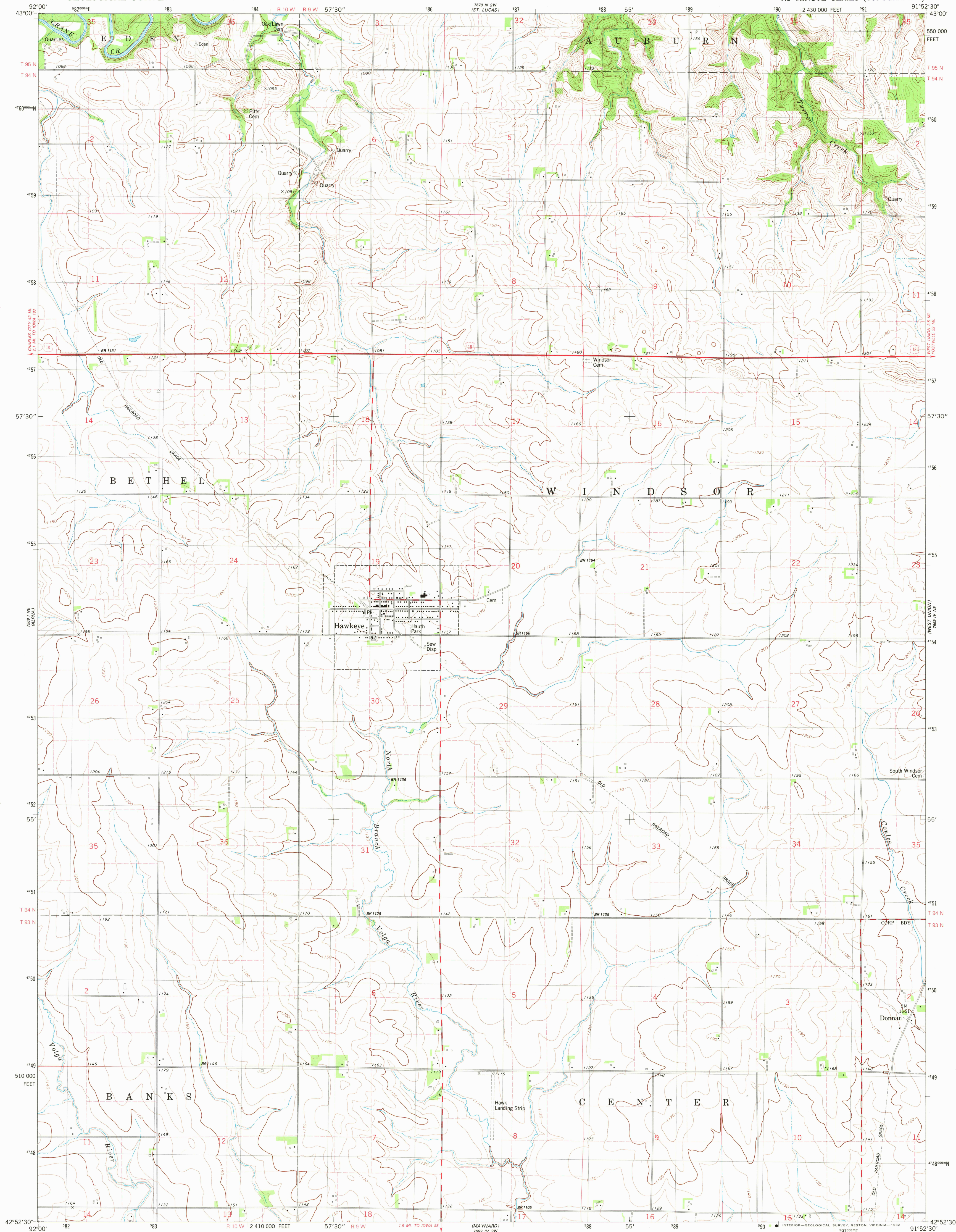
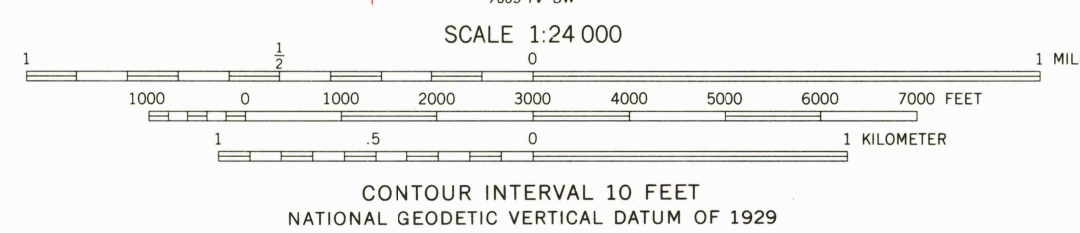
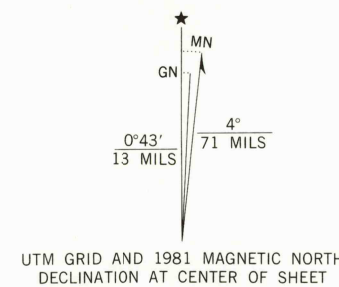


UNITED STATES
DEPARTMENT OF THE INTERIOR
GEOLOGICAL SURVEY

HAWKEYE QUADRANGLE
IOWA—FAYETTE CO.
7.5 MINUTE SERIES (TOPOGRAPHIC)



Mapped, edited, and published by the Geological Survey
Control by USGS and NOS/NOAA
Topography by photogrammetric methods from aerial photographs
taken 1975. Field checked 1977. Map edited 1981
Projection and 10,000-foot grid ticks: Iowa coordinate
system, north zone (Lambert conformal conic)
1000-meter Universal Transverse Mercator grid, zone 15
1927 North American Datum
To place on the predicted North American Datum 1983
move the projection lines 5 meters north and
14 meters east as shown by dashed corner ticks
Fine red dashed lines indicate selected fence and field lines where
generally visible on aerial photographs. This information is unchecked



ROAD CLASSIFICATION	
Primary highway, hard surface	Light-duty road, hard or improved surface
Secondary highway, hard surface	Unimproved road
Interstate Route	U. S. Route
	State Route

THIS MAP COMPLIES WITH NATIONAL MAP ACCURACY STANDARDS
FOR SALE BY U. S. GEOLOGICAL SURVEY, DENVER, COLORADO 80225, OR RESTON, VIRGINIA 22092
AND BY THE IOWA GEOLOGICAL SURVEY, IOWA CITY, IOWA 52240
A FOLDER DESCRIBING TOPOGRAPHIC MAPS AND SYMBOLS IS AVAILABLE ON REQUEST

HAWKEYE, IOWA
N4252.5-W9152.5/7.5
1981

DMA 7669 IV NW—SERIES V876

MAR 10 1982

1/50