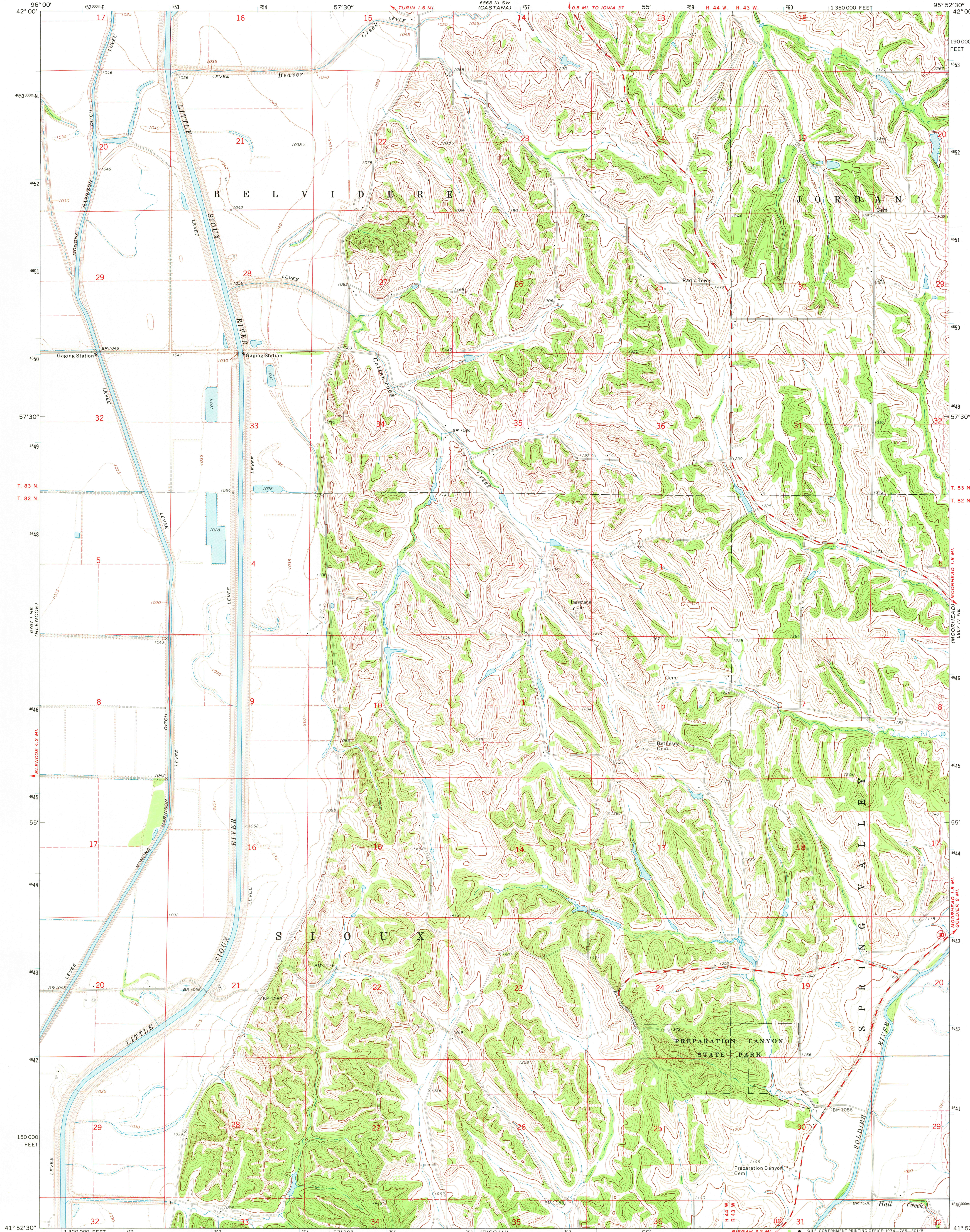


UNITED STATES  
DEPARTMENT OF THE INTERIOR  
GEOLOGICAL SURVEY

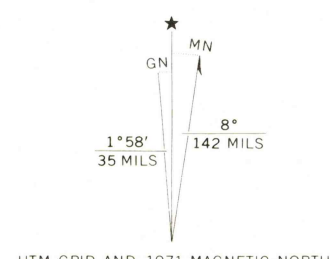
MOORHEAD NW QUADRANGLE  
IOWA—MONONA CO.  
7.5 MINUTE SERIES (TOPOGRAPHIC)

6868 1/4 SE  
(MAPLETON SE)



Mapped, edited, and published by the Geological Survey  
as part of the Department of the Interior program  
for the development of the Missouri River Basin  
Control by USGS and USC&GS

Topography by photogrammetric methods from aerial  
photographs taken 1971 and planetable surveys 1971  
Projection and 10,000-foot grid ticks: Iowa coordinate  
system, north zone (Lambert conformal conical)  
1000-meter Universal Transverse Mercator grid ticks,  
zone 15, shown in blue. 1927 North American datum  
Fine red dashed lines indicate selected fence and field lines where  
generally visible on aerial photographs. This information is unchecked



SCALE 1:24 000  
CONTOUR INTERVAL 20 FEET  
DOTTED LINES REPRESENT 5-FOOT CONTOURS  
DATUM IS MEAN SEA LEVEL  
THIS MAP COMPLIES WITH NATIONAL MAP ACCURACY STANDARDS  
FOR SALE BY U. S. GEOLOGICAL SURVEY, DENVER, COLORADO 80225 OR WASHINGTON, D. C. 20242  
AND BY THE IOWA GEOLOGICAL SURVEY, IOWA CITY, IOWA 52240  
A FOLDER DESCRIBING TOPOGRAPHIC MAPS AND SYMBOLS IS AVAILABLE ON REQUEST



ROAD CLASSIFICATION  
Primary highway, hard surface  
Secondary highway, hard surface  
Interstate Route  
U. S. Route  
State Route  
Light-duty road, hard or improved surface  
Unimproved road

USGS  
Historical File  
Topographic Division

JUL 26 1974  
MOORHEAD NW, IOWA  
N4152.5-W9552.5/7.5

1971  
AMS 6867 IV NW—SERIES V876

6867 1/4 SE  
(MOORHEAD SE)

Douglas  
2500  
50 plane