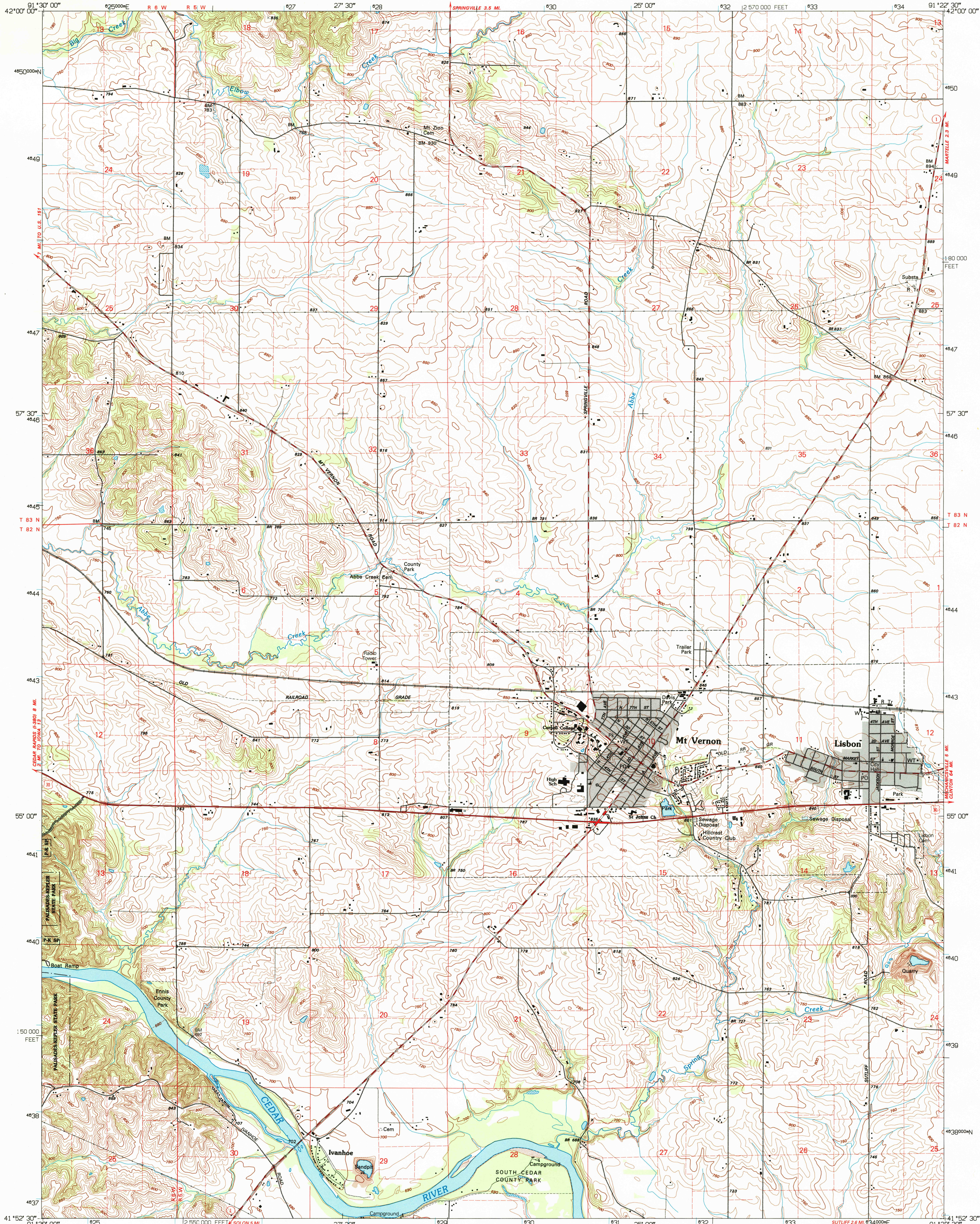
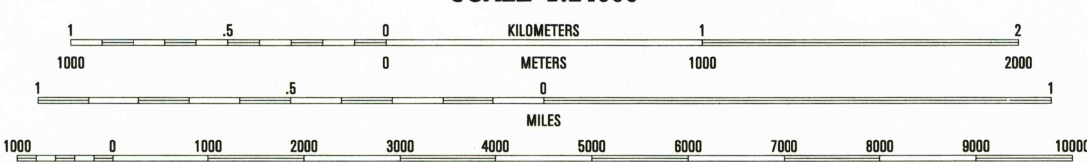
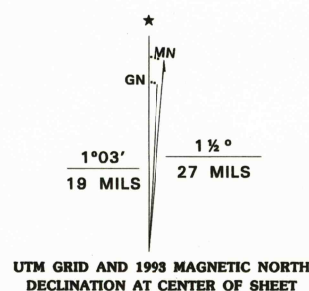


UNITED STATES
DEPARTMENT OF THE INTERIOR
GEOLOGICAL SURVEY

MOUNT VERNON QUADRANGLE
IOWA-LINN CO.
7.5 MINUTE SERIES (TOPOGRAPHIC)

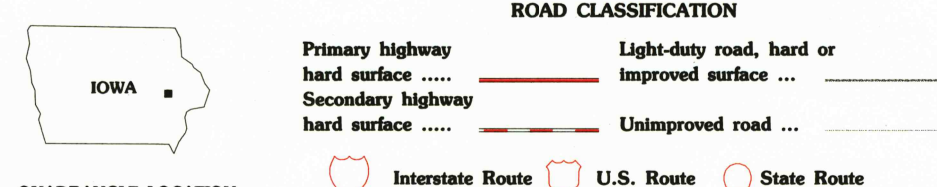


Produced by the United States Geological Survey
Control by USGS and NOS/NOAA
Topography by photogrammetric methods from aerial photographs taken 1963. Field checked 1965. Revised from aerial photographs taken 1990. Field checked 1992. Map edited 1993
Universal Transverse Mercator Projection
10,000-foot grid ticks: Iowa coordinate system, north zone 15, shown in blue 1927 North American Datum (NAD 27)
North American Datum of 1983 (NAD 83) is shown by dashed corner ticks. The values of the shift between NAD 27 and NAD 83 for 7.5-minute intersections are given in USGS Bulletin 1875
There may be private inholdings within the boundaries of the National or State reservations shown on this map
Gray tint indicates areas in which only landmark buildings are shown
Fine red dashed lines indicate selected fence and field lines where generally visible on aerial photographs. This information is unchecked



CONTOUR INTERVAL 10 FEET
NATIONAL GEODETIC VERTICAL DATUM OF 1929

THIS MAP COMPLIES WITH NATIONAL MAP ACCURACY STANDARDS
FOR SALE BY U.S. GEOLOGICAL SURVEY, DENVER, COLORADO 80225, OR RESTON, VIRGINIA 22092
AND IOWA GEOLOGICAL SURVEY, IOWA CITY, IOWA 52240
A FOLDER DESCRIBING TOPOGRAPHIC MAPS AND SYMBOLS IS AVAILABLE ON REQUEST



QUADRANGLE LOCATION

1	2	3	1 Marion
4	5	6	2 Springfield
7	8	9	3 Anamosa
			4 Bertram
			5 Mechanicville
			6 Ely
			7 Solon
			8 Cedar Bluff

MOUNT VERNON, IOWA
41091-H4-TF-024
1993
DMA 7767 IV NW - SERIES V876

