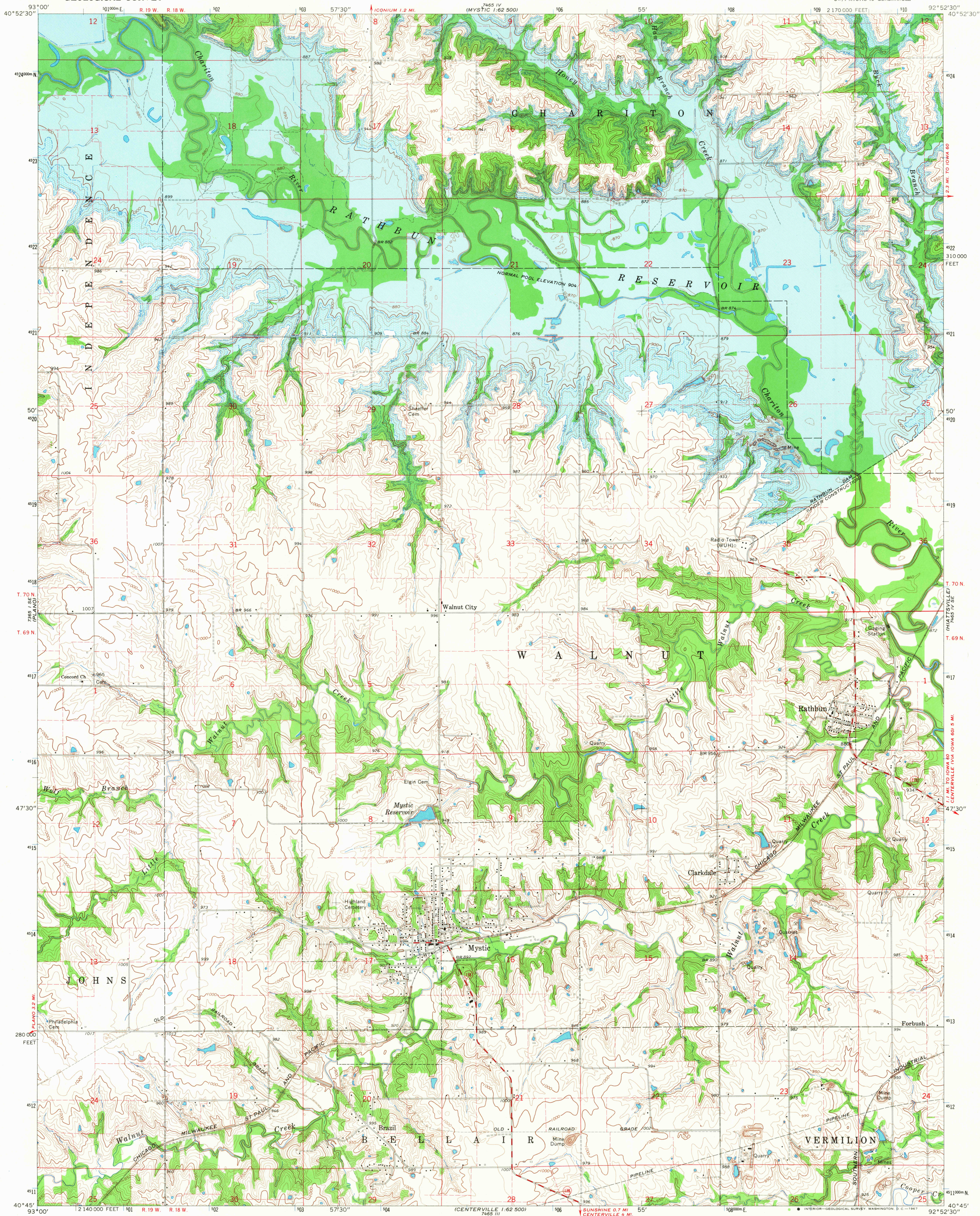
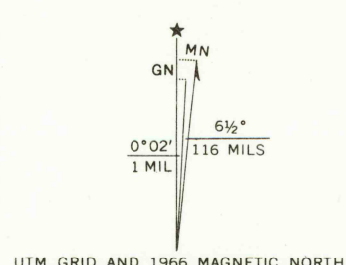


UNITED STATES
DEPARTMENT OF THE INTERIOR
GEOLOGICAL SURVEY

MYSTIC QUADRANGLE
IOWA—APPANOOSE CO.
7.5 MINUTE SERIES (TOPOGRAPHIC)
SW 1/4 MYSTIC 15' QUADRANGLE



Mapped, edited, and published by the Geological Survey as part of the Department of the Interior program for the development of the Missouri River Basin Control by USGS and USC&GS
Topography by photogrammetric methods from aerial photographs taken 1964. Field checked 1966
Polyconic projection 1927 North American datum 10,000-foot grid based on Iowa coordinate system, south zone 1000-meter Universal Transverse Mercator grid ticks, zone 15, shown in blue
Blue hatching indicates areas to be submerged by Rathbun Reservoir Areas covered by dashed light-blue pattern are subject to controlled inundation
Fine red dashed lines indicate selected fence and field lines where generally visible on aerial photographs. This information is unchecked



SCALE 1:24,000
1 000 2000 3000 4000 5000 6000 7000 FEET
1 KILOMETER
CONTOUR INTERVAL 10 FEET
DATUM IS MEAN SEA LEVEL

THIS MAP COMPLIES WITH NATIONAL MAP ACCURACY STANDARDS
FOR SALE BY U. S. GEOLOGICAL SURVEY, DENVER, COLORADO 80225, OR WASHINGTON, D. C. 20242
AND BY THE IOWA GEOLOGICAL SURVEY, IOWA CITY, IOWA 52240
A FOLDER DESCRIBING TOPOGRAPHIC MAPS AND SYMBOLS IS AVAILABLE ON REQUEST

USGS
Historical File
Topographic Division

ROAD CLASSIFICATION
Medium-duty Light-duty
Unimproved dirt
State Route

USGS
FILE COPY
TOPOGRAPHIC DIVISION

MYSTIC, IOWA
SW 1/4 MYSTIC 15' QUADRANGLE
N4045-W9252.5/7.5
1966
AMS 7465 IV SW—SERIES V876

2845
MAR 14 1968