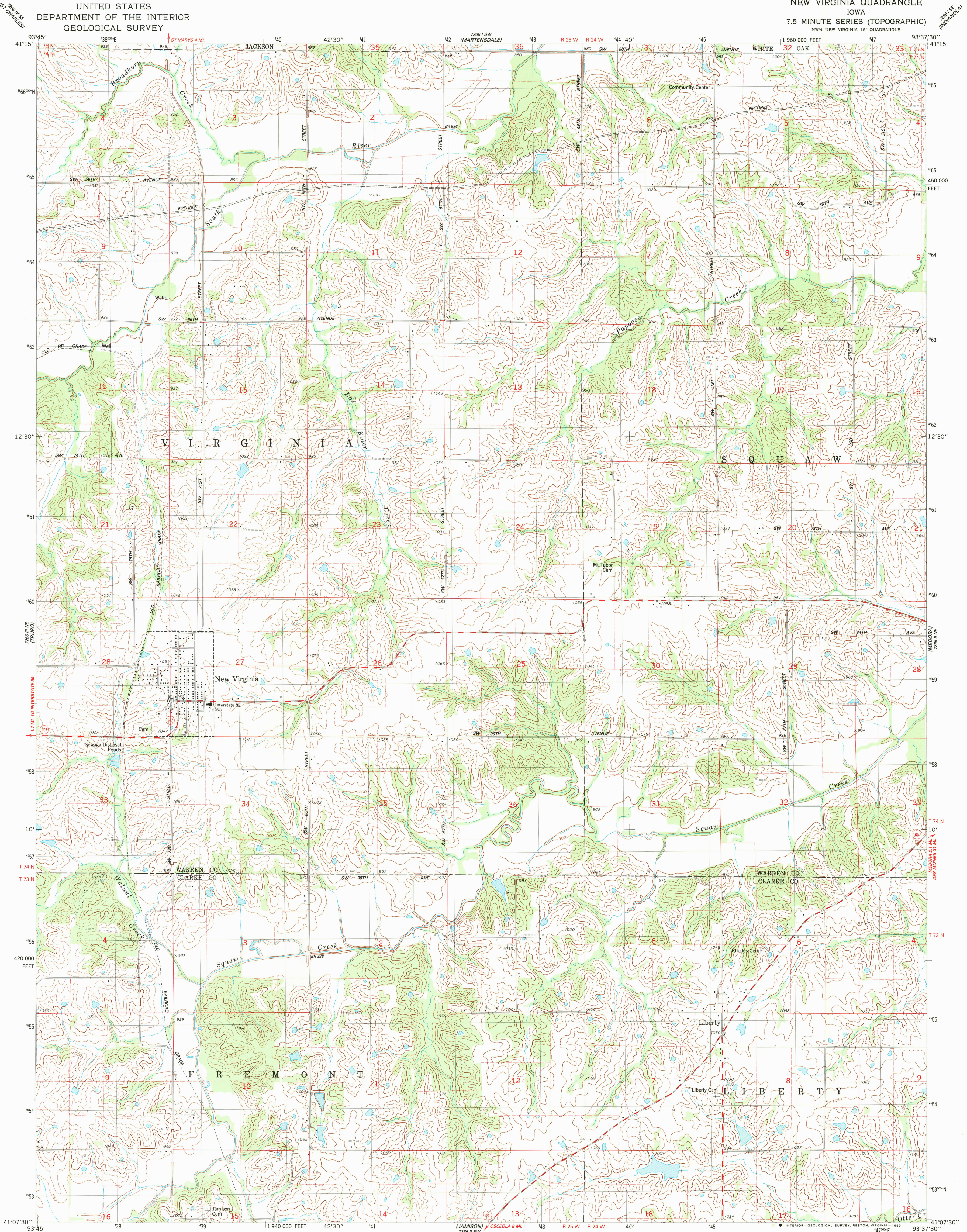


UNITED STATES
DEPARTMENT OF THE INTERIOR
GEOLOGICAL SURVEY

NEW VIRGINIA QUADRANGLE
IOWA
7.5 MINUTE SERIES (TOPOGRAPHIC)
NW4 NEW VIRGINIA 15' QUADRANGLE



Mapped, edited, and published by the Geological Survey

Control by USGS and NOS/NOAA

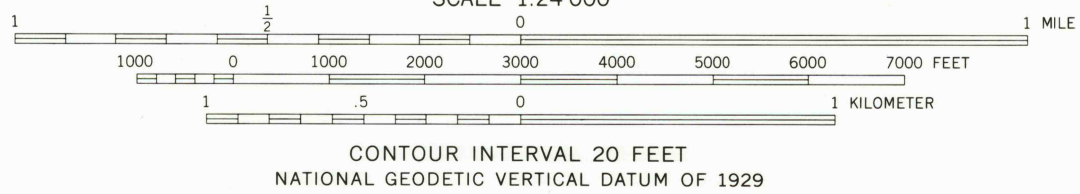
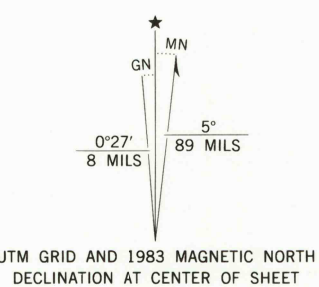
Topography by photogrammetric methods from aerial photographs taken 1978. Field checked 1980. Map edited 1983

Projection and 10,000-foot grid ticks: Iowa coordinate system, south zone (Lambert conformal conic)

1000-meter Universal Transverse Mercator grid, zone 15 1927 North American Datum

To place on the predicted North American Datum 1983 move the projection lines 3 meters north and 18 meters east as shown by dashed corner ticks

Fine red dashed lines indicate selected fence and field lines where generally visible on aerial photographs. This information is unchecked



THIS MAP COMPLIES WITH NATIONAL MAP ACCURACY STANDARDS
FOR SALE BY U.S. GEOLOGICAL SURVEY, DENVER, COLORADO 80225 OR RESTON, VIRGINIA 22092
AND BY THE IOWA GEOLOGICAL SURVEY, IOWA CITY, IOWA 52240
A FOLDER DESCRIBING TOPOGRAPHIC MAPS AND SYMBOLS IS AVAILABLE ON REQUEST



ROAD CLASSIFICATION	
Primary highway, hard surface	Light-duty road, hard or improved surface
Secondary highway, hard surface	Unimproved road
Interstate Route	U.S. Route
	State Route

NEW VIRGINIA, IOWA
NW4 NEW VIRGINIA 15' QUADRANGLE
N4107.5-W9337.5/7.5

1983

DMA 7266 II NW-SERIES V876