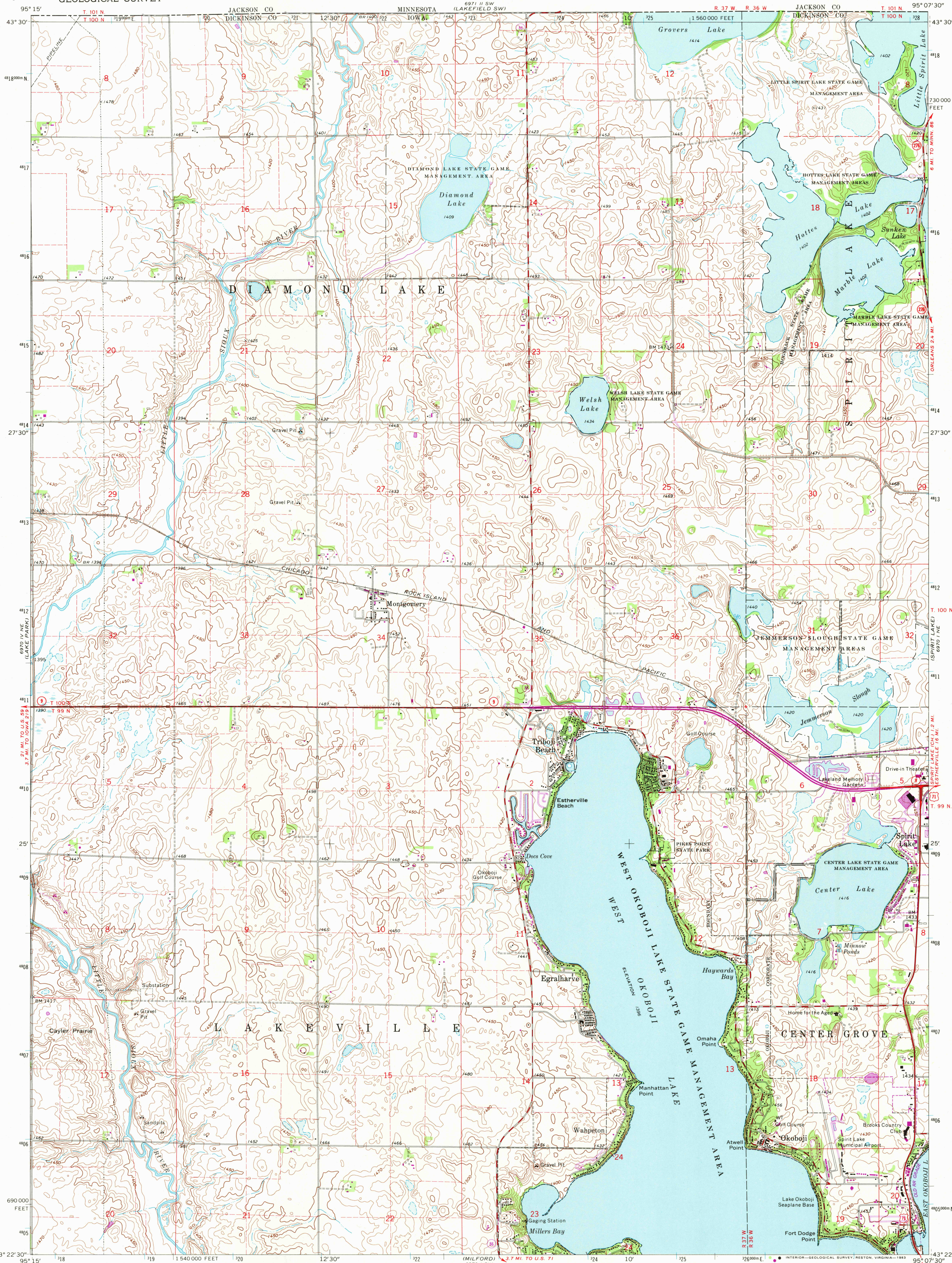


UNITED STATES
DEPARTMENT OF THE INTERIOR
GEOLOGICAL SURVEY

OKOBOJI QUADRANGLE
IOWA—DICKINSON CO.
7.5 MINUTE SERIES (TOPOGRAPHIC)



Mapped, edited, and published by the Geological Survey

Control by USGS and NOS/NOAA

Topography by photogrammetric methods from aerial photographs taken 1966. Field checked 1970

Polyconic projection. 10,000-foot grid ticks based on Iowa coordinate system, north zone. 1000-meter Universal Transverse Mercator grid ticks, zone 15, shown in blue 1927 North American Datum. To place on the predicted North American Datum 1983 move the projection lines 6 meters north and 22 meters east as shown by dashed corner ticks

Fine red dashed lines indicate selected fence and field lines where generally visible on aerial photographs. This information is unchecked

There may be private inholdings within the boundaries of the National or State reservations shown on this map

