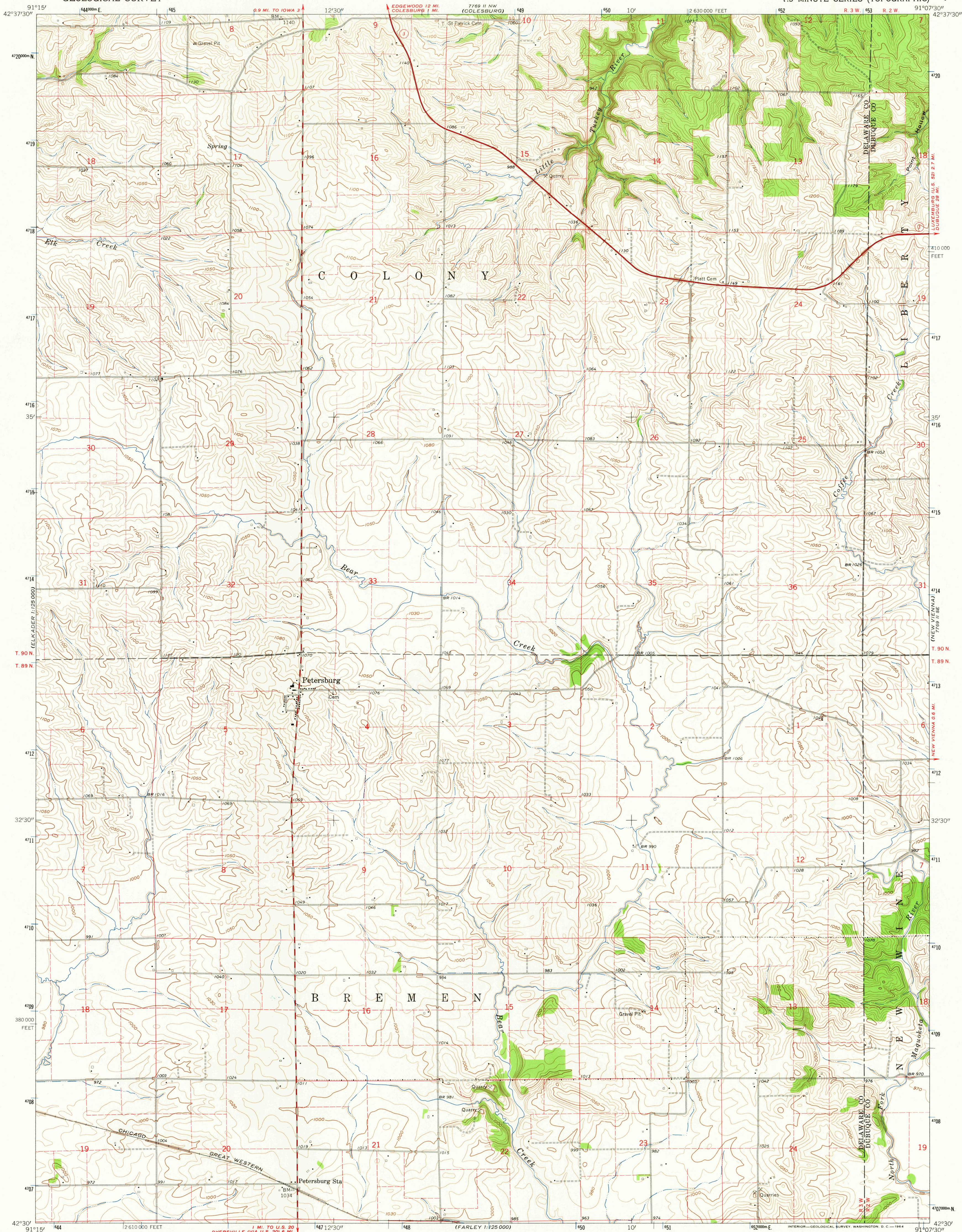


UNITED STATES  
DEPARTMENT OF THE INTERIOR  
GEOLOGICAL SURVEY

PETERSBURG QUADRANGLE  
IOWA  
7.5 MINUTE SERIES (TOPOGRAPHIC)



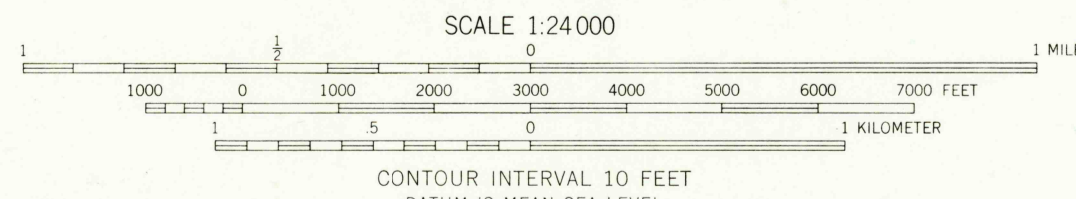
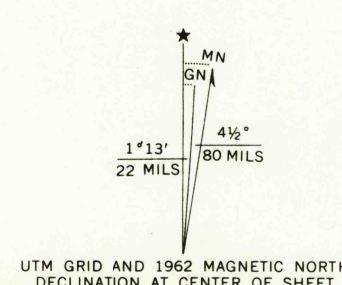
Mapped, edited, and published by the Geological Survey

Control by USGS and USCGS

Topography by photogrammetric methods from aerial  
photographs taken 1958. Field checked 1962

Polycyclic projection. 1927 North American datum  
10,000-foot grid based on Iowa coordinate system, north zone  
1000-meter Universal Transverse Mercator grid ticks,  
zone 15, shown in blue

Fine red dashed lines indicate selected fence and field lines where  
generally visible on aerial photographs. This information is unchecked



THIS MAP COMPLIES WITH NATIONAL MAP ACCURACY STANDARDS  
FOR SALE BY U. S. GEOLOGICAL SURVEY, DENVER 25, COLORADO OR WASHINGTON 25, D. C.  
AND BY THE IOWA GEOLOGICAL SURVEY, IOWA CITY, IOWA  
A FOLDER DESCRIBING TOPOGRAPHIC MAPS AND SYMBOLS IS AVAILABLE ON REQUEST

USGS  
Historical File  
Topographic Division



ROAD CLASSIFICATION  
Heavy-duty ———— Light-duty ————  
Medium-duty ———— Unimproved dirt ————  
○ State Route

PETERSBURG, IOWA  
N4230—W9107.5/7.5

1962

AMS 7769 II SW—SERIES V876

2085

MAR 2 1964