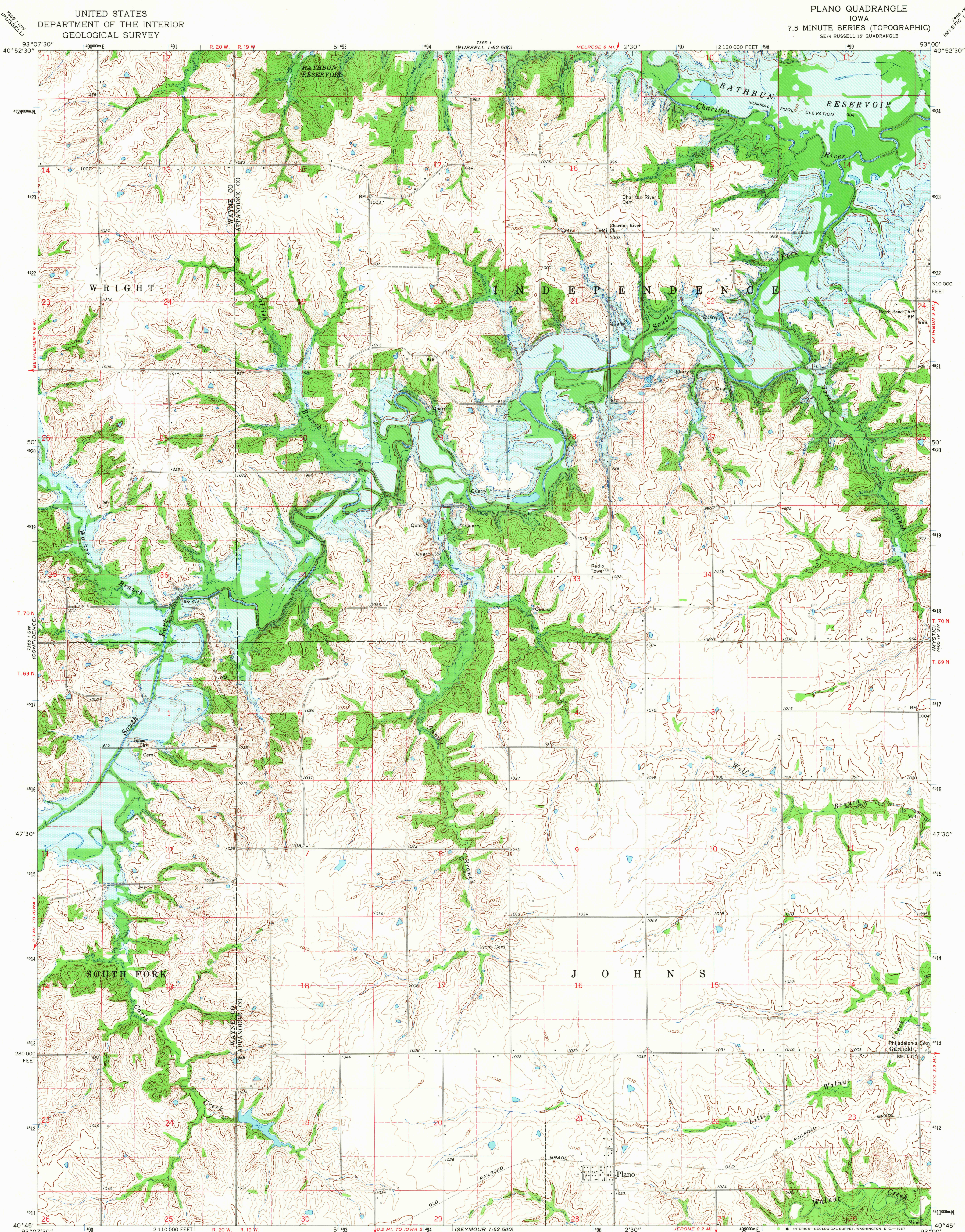
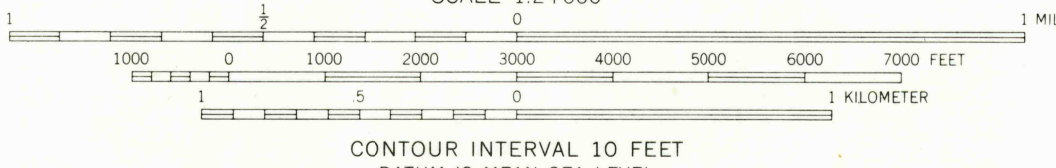
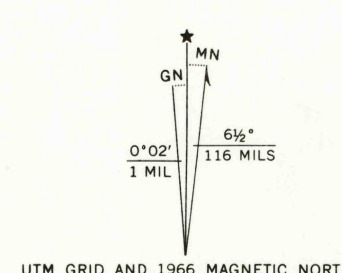


UNITED STATES
DEPARTMENT OF THE INTERIOR
GEOLOGICAL SURVEY

PLANO QUADRANGLE
IOWA
7.5 MINUTE SERIES (TOPOGRAPHIC)
SE/4 RUSSELL 15' QUADRANGLE



Mapped, edited, and published by the Geological Survey
as part of the Department of the Interior program
for the development of the Missouri River Basin
Control by USGS and USC&GS
Topography by photogrammetric methods from aerial
photographs taken 1964. Field checked 1966
Polyconic projection. 1927 North American datum
10,000-foot grid based on Iowa coordinate system, south zone
1000-meter Universal Transverse Mercator grid ticks,
zone 15, shown in blue
Blue hatching indicates areas to be submerged by Rathbun Reservoir
Areas covered by dashed light-blue pattern
are subject to controlled inundation
Fine red dashed lines indicate selected fence and field lines where
generally visible on aerial photographs. This information is unchecked



THIS MAP COMPLIES WITH NATIONAL MAP ACCURACY STANDARDS
FOR SALE BY U. S. GEOLOGICAL SURVEY, DENVER, COLORADO 80225, OR WASHINGTON, D. C. 20242
AND BY THE IOWA GEOLOGICAL SURVEY, IOWA CITY, IOWA 52240
A FOLDER DESCRIBING TOPOGRAPHIC MAPS AND SYMBOLS IS AVAILABLE ON REQUEST

USGS
Historical File
Topographic Division
IOWA
U.S.G.S.
QUADRANGLE LOCATION
TOPOGRAPHIC DIVISION

ROAD CLASSIFICATION
Light-duty ———— Unimproved dirt - - - - -

PLANO, IOWA
SE/4 RUSSELL 15' QUADRANGLE
N4045—W9300/7.5
1966
AMS 7365 1 SE—SERIES V876

2635
MAR 11 1969