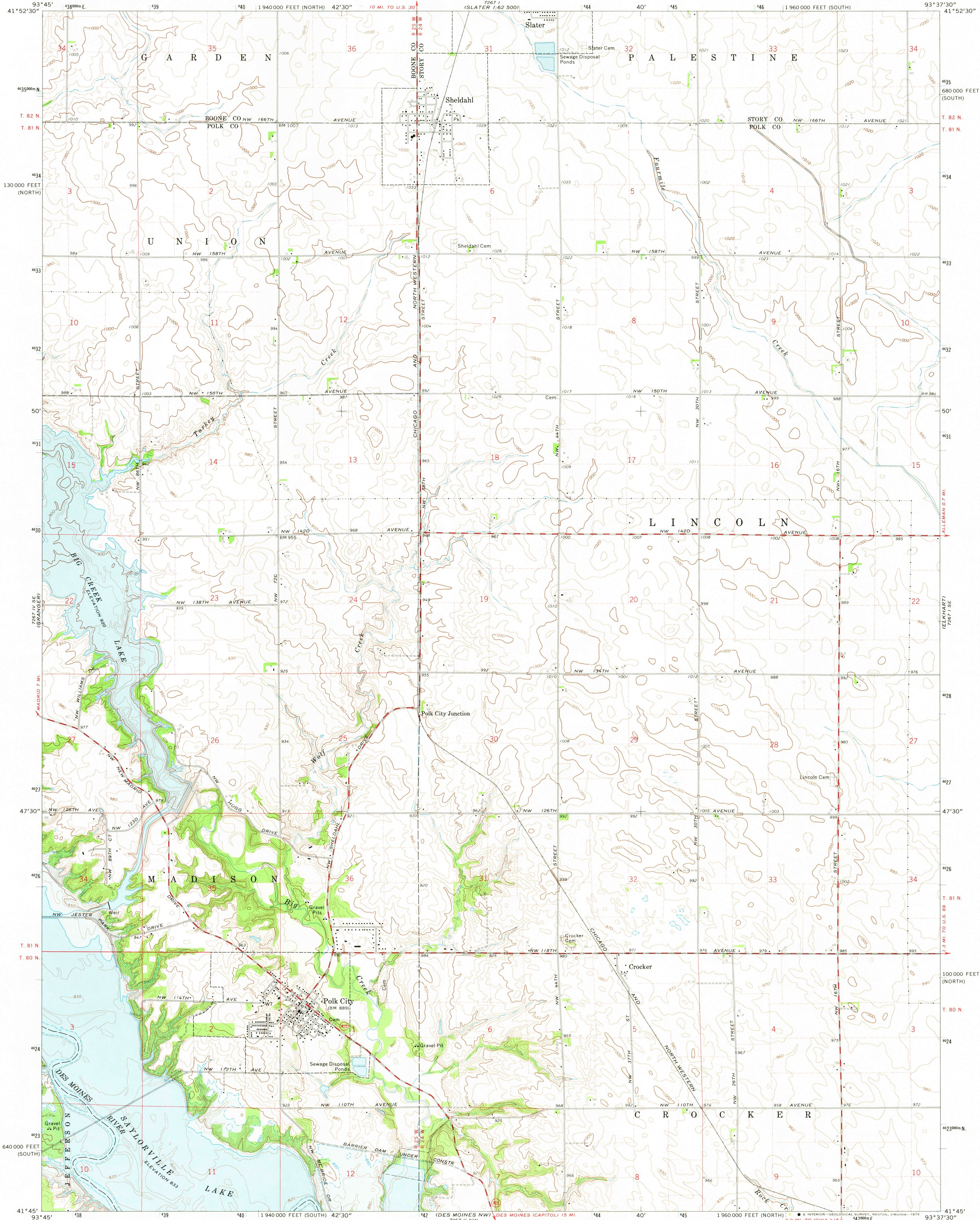


7267 I NW  
(LUTHER)

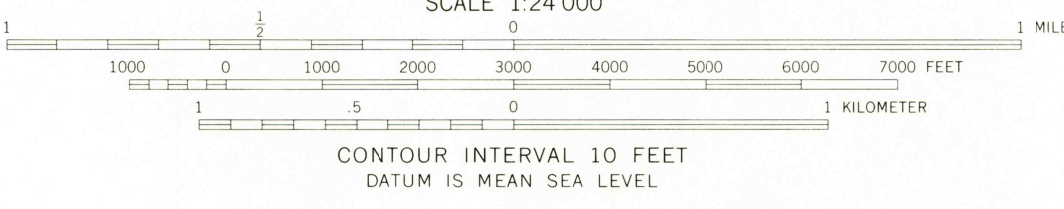
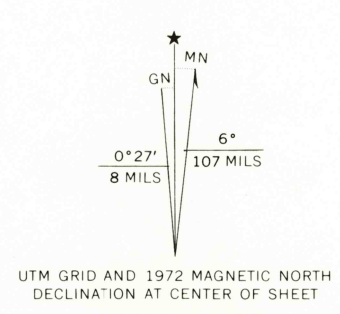
UNITED STATES  
DEPARTMENT OF THE INTERIOR  
GEOLOGICAL SURVEY

POLK CITY QUADRANGLE  
IOWA  
7.5 MINUTE SERIES (TOPOGRAPHIC)  
SW/4 SLATER 15' QUADRANGLE

7267 I SE  
(SLATER 1:62,500)



Mapped, edited, and published by the Geological Survey  
Control by USGS and USC&GS  
Topography by photogrammetric methods from aerial  
photographs taken 1971. Field checked 1972  
Projection: Iowa coordinate system, south zone  
(Lambert conformal conic)  
10,000-foot grid ticks based on Iowa coordinate  
system, south and north zones  
1000-meter Universal Transverse Mercator grid ticks,  
zone 15, shown in blue. 1927 North American datum  
Areas covered by dashed light-blue pattern  
are subject to controlled inundation  
Fine red dashed lines indicate selected fence and field lines where  
generally visible on aerial photographs. This information is unchecked



ROAD CLASSIFICATION	
Primary highway, hard surface	Light-duty road, hard or improved surface
Secondary highway, hard surface	Unimproved road
Interstate Route	U. S. Route
	State Route

THIS MAP COMPLIES WITH NATIONAL MAP ACCURACY STANDARDS  
FOR SALE BY U. S. GEOLOGICAL SURVEY, DENVER, COLORADO 80225, OR RESTON, VIRGINIA 22092  
AND BY THE IOWA GEOLOGICAL SURVEY, IOWA CITY, IOWA 52240  
A FOLDER DESCRIBING TOPOGRAPHIC MAPS AND SYMBOLS IS AVAILABLE ON REQUEST

USGS  
Historical File  
Topographic Division

POLK CITY, IOWA  
SW/4 SLATER 15' QUADRANGLE  
N4145-W9337.5/7.5  
1972  
AMS 7267 I SW-SERIES V876

7267 I NE  
(DES MOINES NE)  
MAR 18 1975