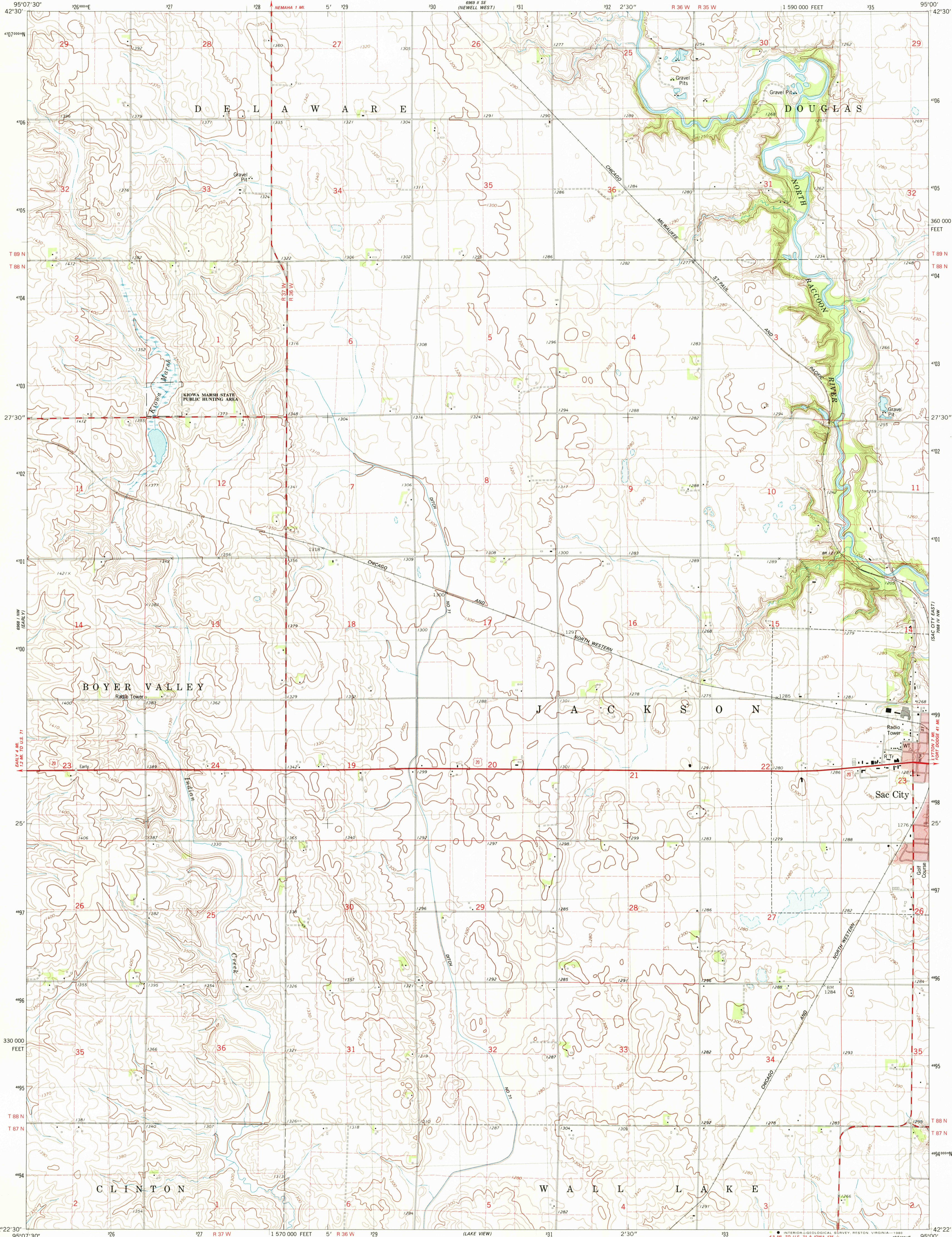


UNITED STATES
DEPARTMENT OF THE INTERIOR
GEOLOGICAL SURVEY

SAC CITY WEST QUADRANGLE
IOWA—SAC CO.
7.5 MINUTE SERIES (TOPOGRAPHIC)

1 590 000 FEET



Mapped, edited, and published by the Geological Survey

Control by USGS and NOS/NOAA

Topography by photogrammetric methods from aerial photographs taken 1973. Field checked 1975. Map edited 1980

Projection and 10,000-foot grid ticks: Iowa coordinate system, north zone (Lambert conformal conic)

1000-meter Universal Transverse Mercator grid, zone 15

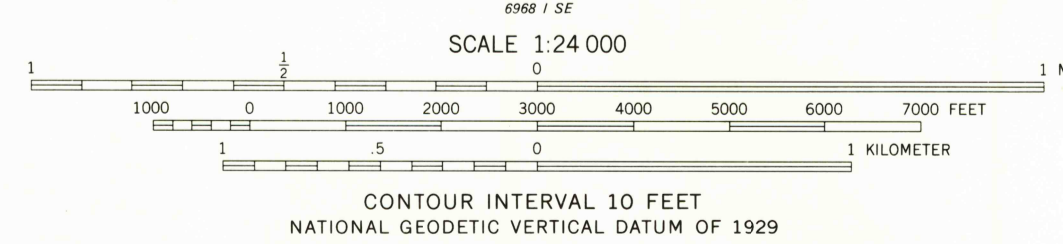
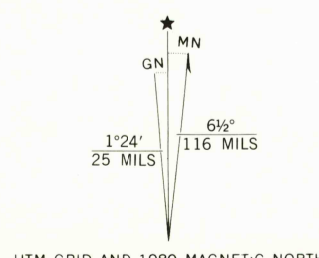
1927 North American Datum

To place on the predicted North American Datum 1983 move the projection lines 5 meters north and 22 meters east as shown by dashed corner ticks

There may be private inholdings within the boundaries of the National or State reservations shown on this map

Red tint indicates areas in which only landmark buildings are shown

Fine red dashed lines indicate selected fence and field lines where generally visible on aerial photographs. This information is unchecked



THIS MAP COMPLIES WITH NATIONAL MAP ACCURACY STANDARDS
FOR SALE BY U. S. GEOLOGICAL SURVEY, DENVER, COLORADO 80225, OR RESTON, VIRGINIA 22092
AND BY THE IOWA GEOLOGICAL SURVEY, IOWA CITY, IOWA 52240
A FOLDER DESCRIBING TOPOGRAPHIC MAPS AND SYMBOLS IS AVAILABLE ON REQUEST



QUADRANGLE LOCATION

ROAD CLASSIFICATION	
Primary highway, hard surface	Light-duty road, hard or improved surface
Secondary highway, hard surface	Unimproved road
Interstate Route	U. S. Route
	State Route

USGS
Historical File
Topographic Division

SAC CITY WEST, IOWA
N4222.5—W9500.7.5

1980

DMA 6968 1 NE—SERIES V876

OCT 23 1980