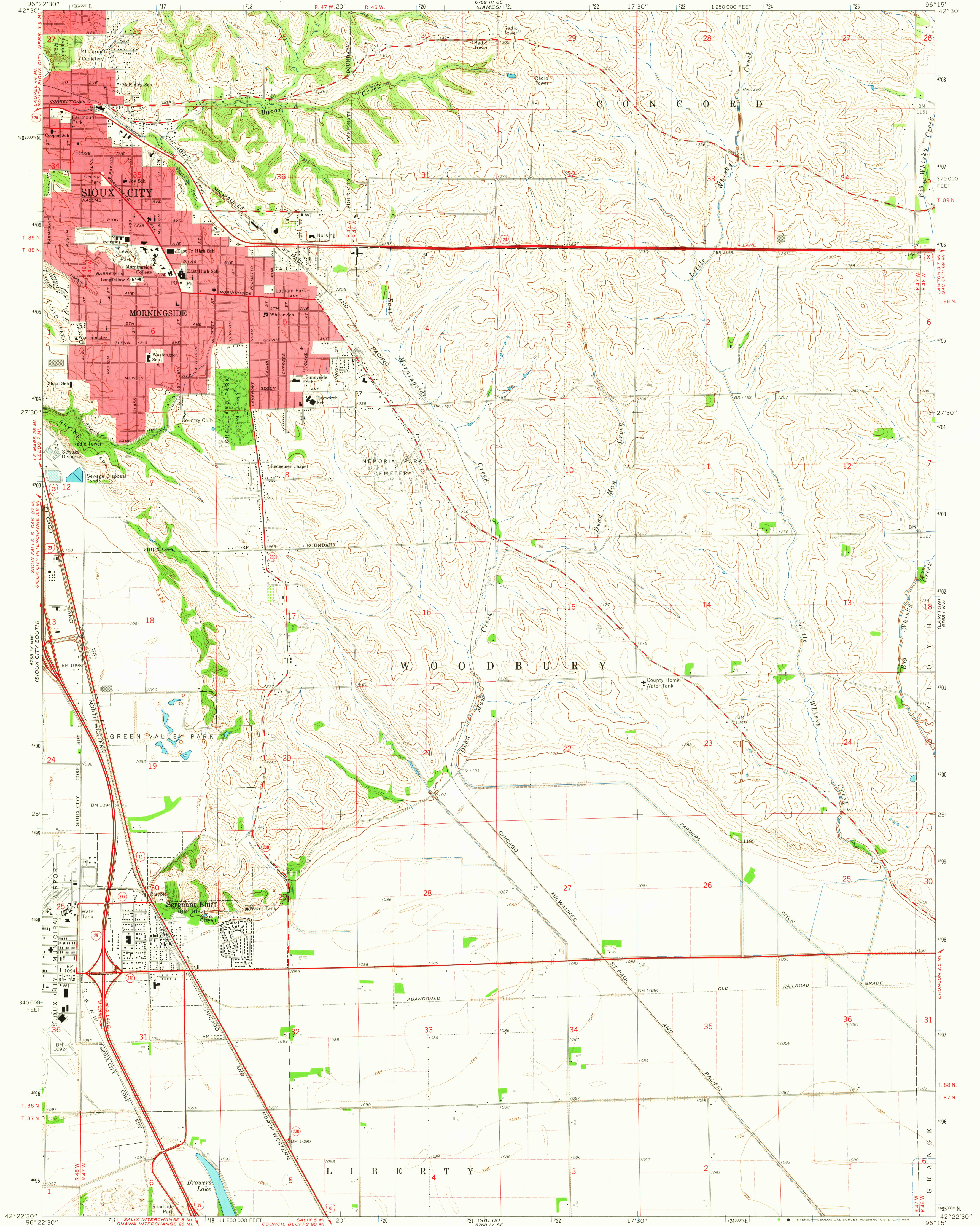


UNITED STATES
DEPARTMENT OF THE INTERIOR
GEOLOGICAL SURVEY

SERGEANT BLUFF QUADRANGLE
IOWA—WOODBURY CO.
7.5 MINUTE SERIES (TOPOGRAPHIC)

6769 1/4 SE
(JAMES)
162 500
UNION CENTER



Mapped, edited, and published by the Geological Survey

Control by USGS and USC&GS

Topography by photogrammetric methods from aerial photographs taken 1961 and planetable surveys 1964

Polyconic projection. 1927 North American datum

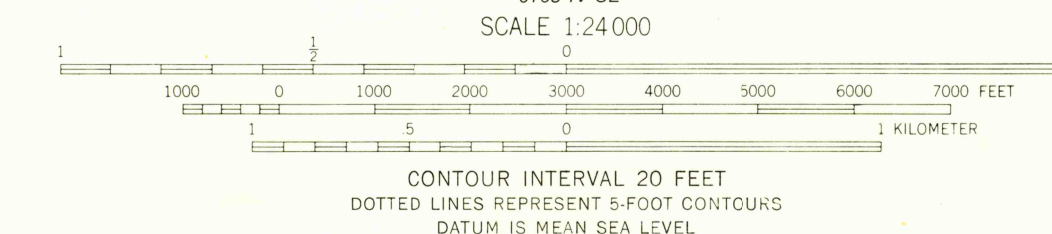
10,000-foot grid based on Iowa coordinate system, north zone

1000-meter Universal Transverse Mercator grid ticks, zone 14, shown in blue

Red tint indicates areas in which only landmark buildings are shown

Fine red dashed lines indicate selected fence and field lines where generally visible on aerial photographs. This information is unchecked

UTM GRID AND 1964 MAGNETIC NORTH DECLINATION AT CENTER OF SHEET



USGS
Historical File
Topographic Division



ROAD CLASSIFICATION
Heavy-duty ——— Light-duty ———
Medium-duty ——— Unimproved dirt ———
Interstate Route U.S. Route State Route

SERGEANT BLUFF, IOWA
N4222.5—W9615.7.5

1964
AMS 6768 IV NE—SERIES V876

DEC 17 1965

2975

U.S.G.S.
FILE COPY
TOPOGRAPHIC DIVISION