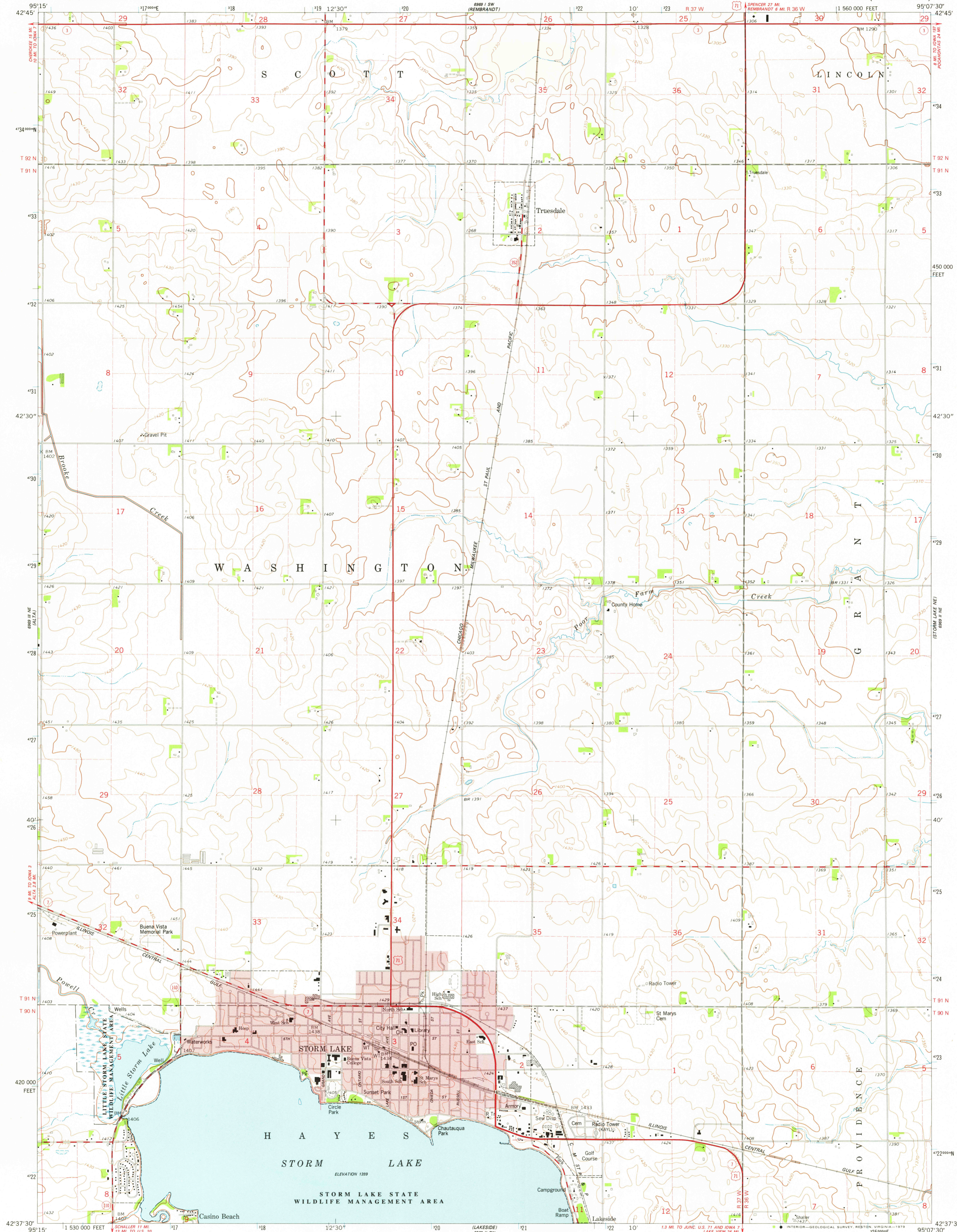
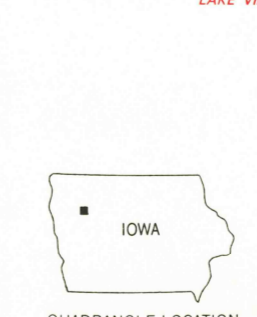
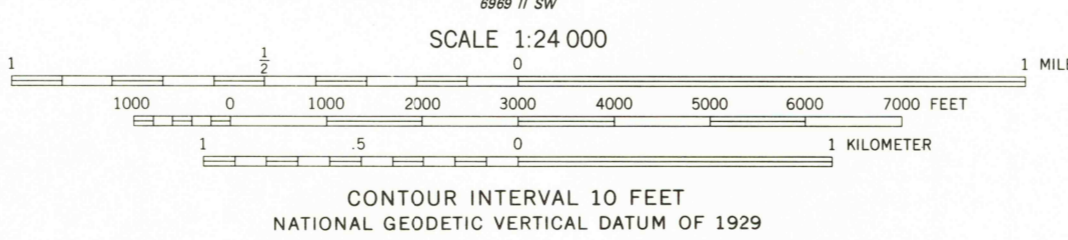
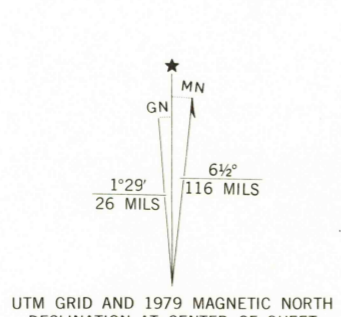




6899 I SE
(BOUX RAPIDS SE)



Mapped, edited, and published by the Geological Survey
Control by USGS and NOS/NOAA
Topography by photogrammetric methods from aerial photographs
taken 1973. Field checked 1974. Map edited 1979
Projection and 10,000-foot grid ticks: Iowa coordinate
system, north zone (Lambert conformal conic)
1000-meter Universal Transverse Mercator grid ticks,
zone 15, shown in blue. 1927 North American datum
Red tint indicates area in which only landmark buildings are shown
There may be private inholdings within the boundaries of the
National or State reservations shown on this map
Fine red dashed lines indicate selected fence and field lines where
generally visible on aerial photographs. This information is unchecked



USGS
Historical File
Topographic Division
STORM LAKE, IOWA
N4237.5-W9507.5/7.5
1979
AMS 6899 II NW—SERIES V876

SEP 17 1979
1500