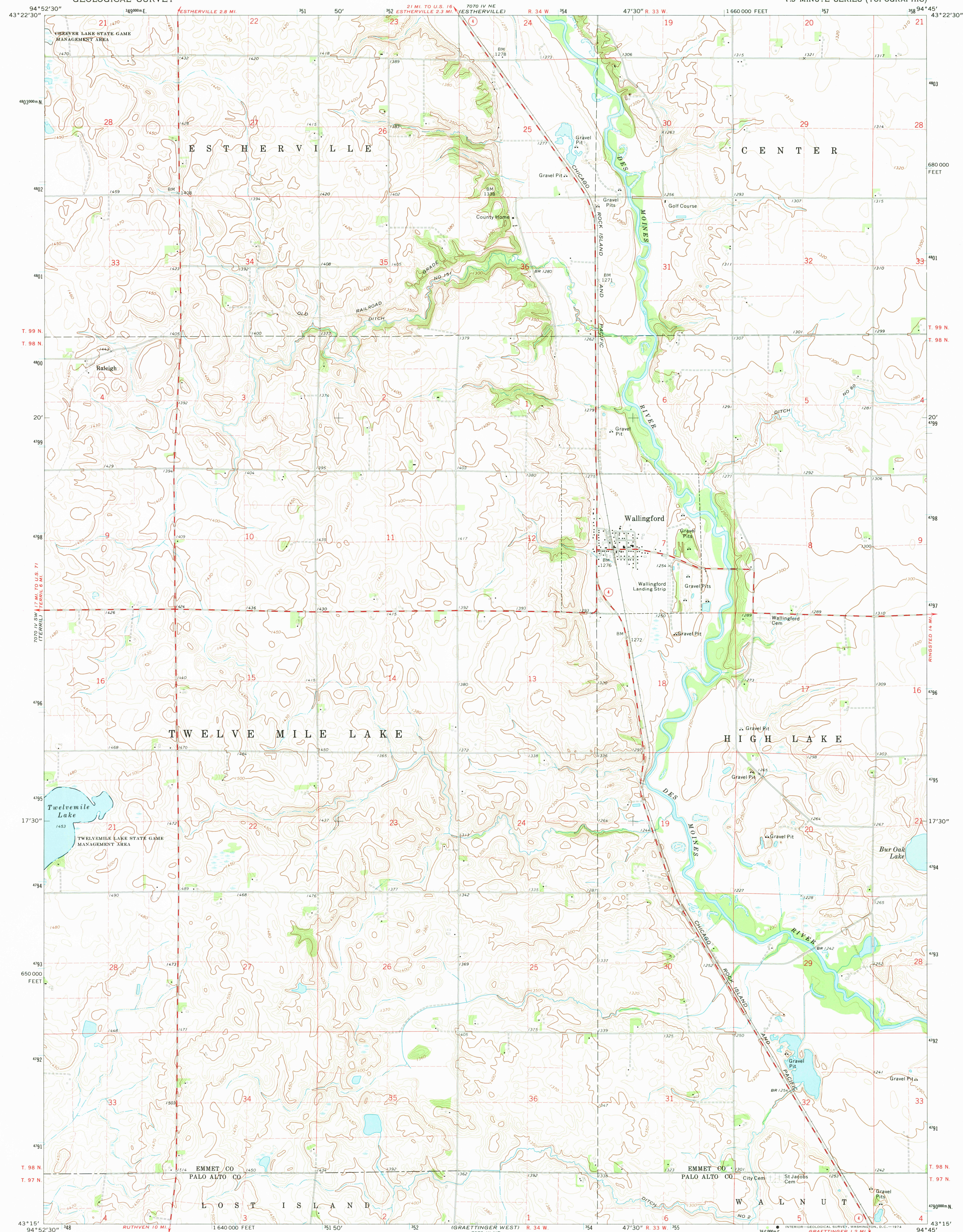


94°52'30" 3499000 E. FESTHERVILLE 2.8 MI. 21 MI. TO U.S. 16 TOTO IV NE 7070 IV NE 21 MI. TO U.S. 16 FESTHERVILLE R. 34 W. 47'30" N. 33 W. 1 660 000 FEET 94°45' 43'22'30"



Mapped, edited, and published by the Geological Survey
Control by USGS and USC&GS

Topography by photogrammetric methods from aerial photographs taken 1970. Field checked 1972

Polyconic projection. 1927 North American datum
10,000-foot grid based on Iowa coordinate system, north zone
1000-meter Universal Transverse Mercator grid ticks,
zone 15, shown in blue




Fine red dashed lines indicate selected fence and field lines where generally visible on aerial photographs. This information is unchecked

UTM GRID AND 1972 MAGNETIC NORTH-DECLINATION AT CENTER OF SHEET.

THIS MAP COMPLIES WITH NATIONAL MAP ACCURACY STANDARDS
FOR SALE BY U. S. GEOLOGICAL SURVEY, DENVER, COLORADO 80225, OR WASHINGTON, D. C. 20242
AND BY THE IOWA GEOLOGICAL SURVEY, IOWA CITY, IOWA 52240
A FOLDER DESCRIBING TOPOGRAPHIC MAPS AND SYMBOLS IS AVAILABLE ON REQUEST

ROAD CLASSIFICATION

Primary highway, hard surface	Light-duty road, hard or improved surface
Secondary highway, hard surface	Unimproved road

 Interstate Route  U. S. Route  State Route

WALLINGFORD, IOWA
N4315—W9445/7.5

1972

AMS 7070 IV SE—SERIES V876

USGS
Historical File
Topographic Division

MAY 29 1974