

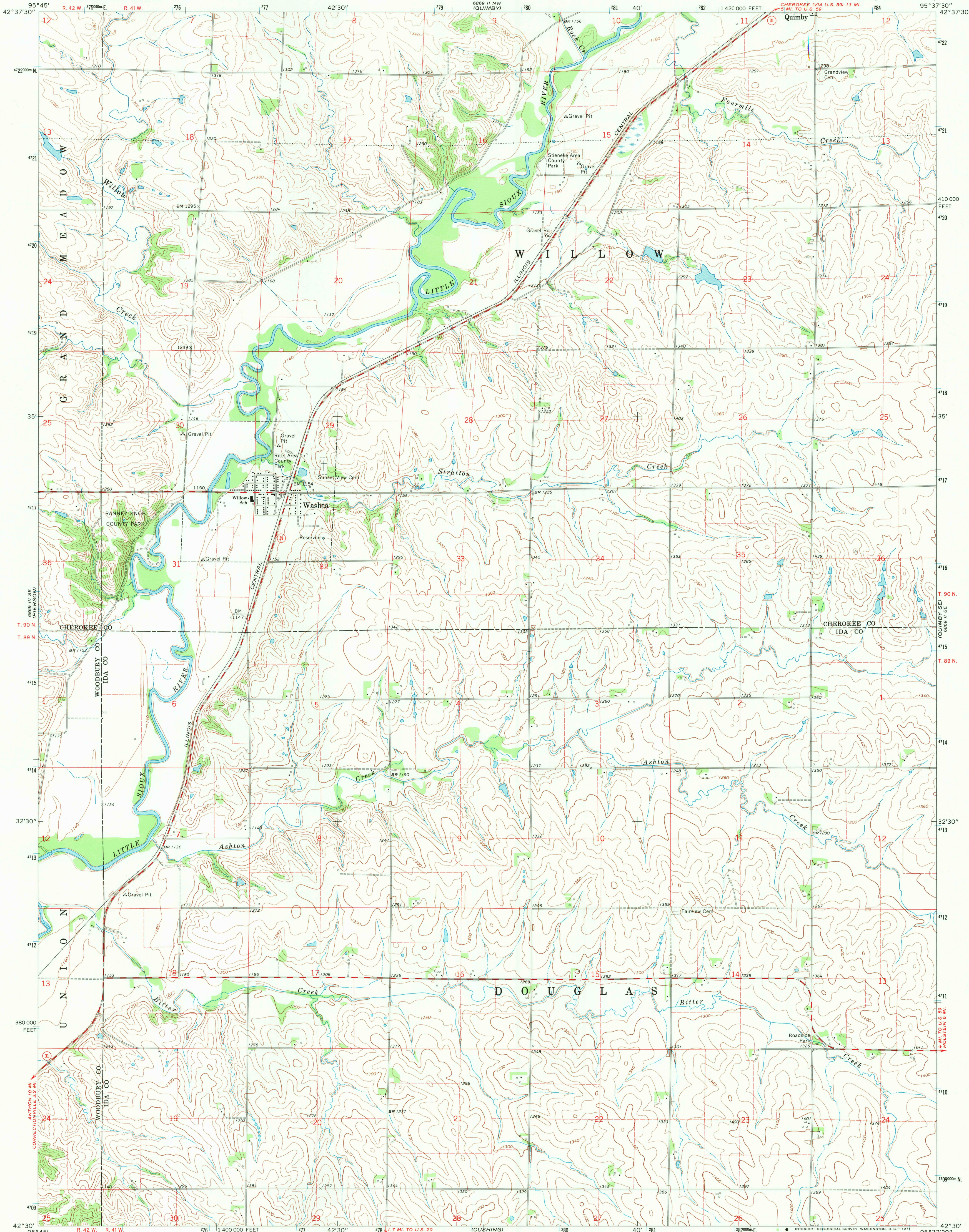
UNITED STATES  
DEPARTMENT OF THE INTERIOR  
GEOLOGICAL SURVEY

WASHTA QUADRANGLE  
IOWA

7.5 MINUTE SERIES (TOPOGRAPHIC)

CHEROKEE (VIA U.S. 59) 13 MI.  
5 MI. TO U.S. 59

6869 II NW (QUIMBY)  
6869 II SE (CHEROKEE SOUTH)



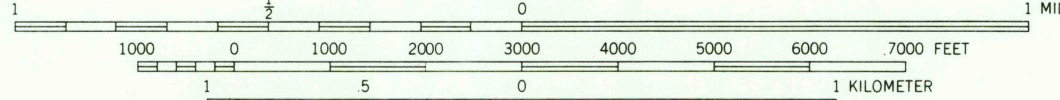
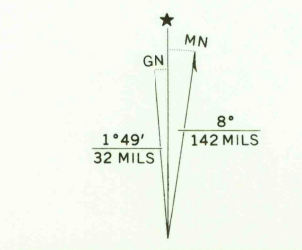
Mapped, edited, and published by the Geological Survey  
as part of the Department of the Interior program  
for the development of the Missouri River Basin

Control by USGS and USC&GS

Topography by photogrammetric methods from aerial  
photographs taken 1968. Field checked 1969

Polyconic projection. 1927 North American datum.  
10,000-foot grid based on Iowa coordinate system, north zone  
1000-meter Universal Transverse Mercator grid ticks,  
zone 15, shown in blue

Fine red dashed lines indicate selected fence and field lines where  
generally visible on aerial photographs. This information is unchecked



CONTOUR INTERVAL 20 FEET  
DATUM IS MEAN SEA LEVEL

THIS MAP COMPLIES WITH NATIONAL MAP ACCURACY STANDARDS  
FOR SALE BY U.S. GEOLOGICAL SURVEY, DENVER, COLORADO 80225, OR WASHINGTON, D. C. 20242  
AND BY THE IOWA GEOLOGICAL SURVEY, IOWA CITY, IOWA 52240  
A FOLDER DESCRIBING TOPOGRAPHIC MAPS AND SYMBOLS IS AVAILABLE ON REQUEST

ROAD CLASSIFICATION  
Secondary highway, all weather, Light-duty road, all weather,  
hard surface  
Unimproved road, fair or dry  
weather  
State Route



WASHTA, IOWA  
N4230—W9537.5/7.5

1969

AMS 6869 II SW—SERIES W876

SEP 8 1971

USGS  
HISTORICAL FILE  
TOPOGRAPHIC DIVISION