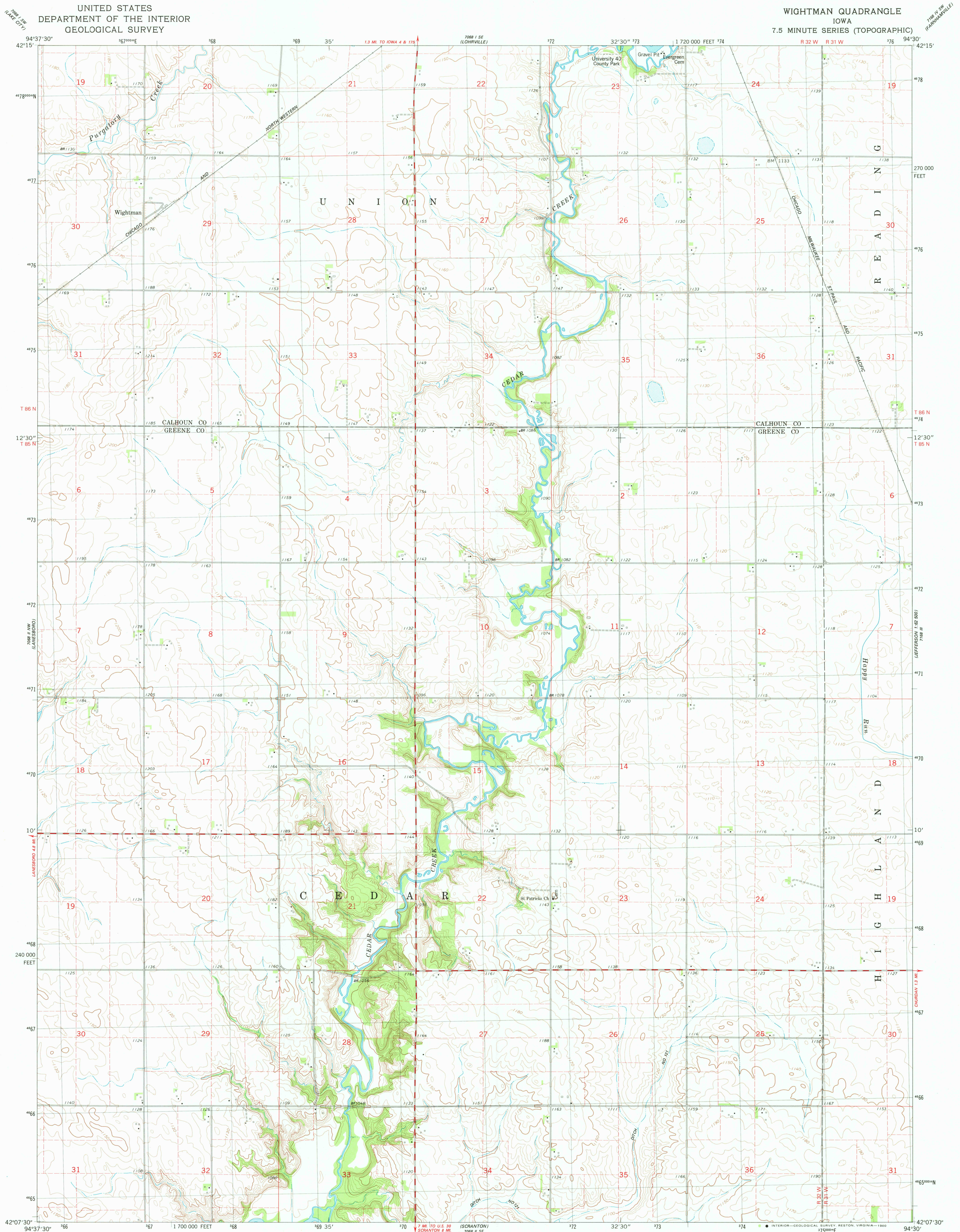


UNITED STATES
DEPARTMENT OF THE INTERIOR
GEOLOGICAL SURVEY

WIGHTMAN QUADRANGLE
IOWA
7.5 MINUTE SERIES (TOPOGRAPHIC)



Mapped, edited, and published by the Geological Survey

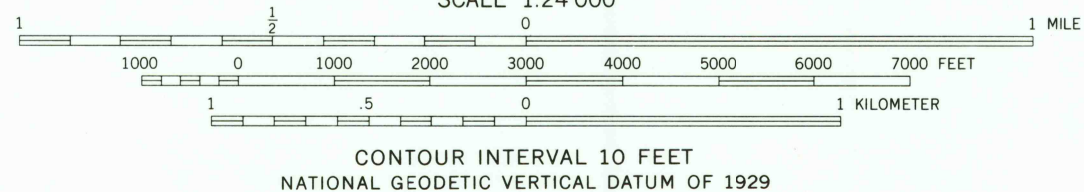
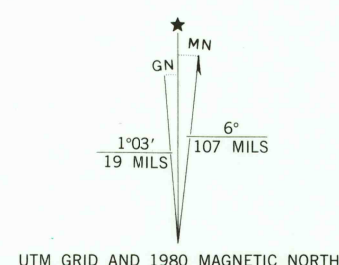
Control by USGS and NOS/NOAA

Topography by photogrammetric methods from aerial photographs
taken 1973. Field checked 1975. Map edited 1980

Projection and 10,000-foot grid ticks: Iowa coordinate
system, north zone (Lambert conformal conic)
1000-meter Universal Transverse Mercator grid, zone 15
1927 North American Datum

To place on the predicted North American Datum 1983
move the projection lines 4 meters north and
20 meters east as shown by dashed corner ticks

Fine red dashed lines indicate selected fence and field lines where
generally visible on aerial photographs. This information is unchecked



ROAD CLASSIFICATION	
Primary highway, hard surface	Light-duty road, hard or improved surface
Secondary highway, hard surface	Unimproved road
Interstate Route	U. S. Route
	State Route

THIS MAP COMPLIES WITH NATIONAL MAP ACCURACY STANDARDS
FOR SALE BY U. S. GEOLOGICAL SURVEY, DENVER, COLORADO 80225 OR RESTON, VIRGINIA 22092
AND BY THE IOWA GEOLOGICAL SURVEY, IOWA CITY, IOWA 52240
A FOLDER DESCRIBING TOPOGRAPHIC MAPS AND SYMBOLS IS AVAILABLE ON REQUEST

USGS
Historical File
Topographic Division

WIGHTMAN, IOWA
N4207.5-W9430/7.5
1980

OCT 22 1980

DMA 7068 II NE-SERIES V876