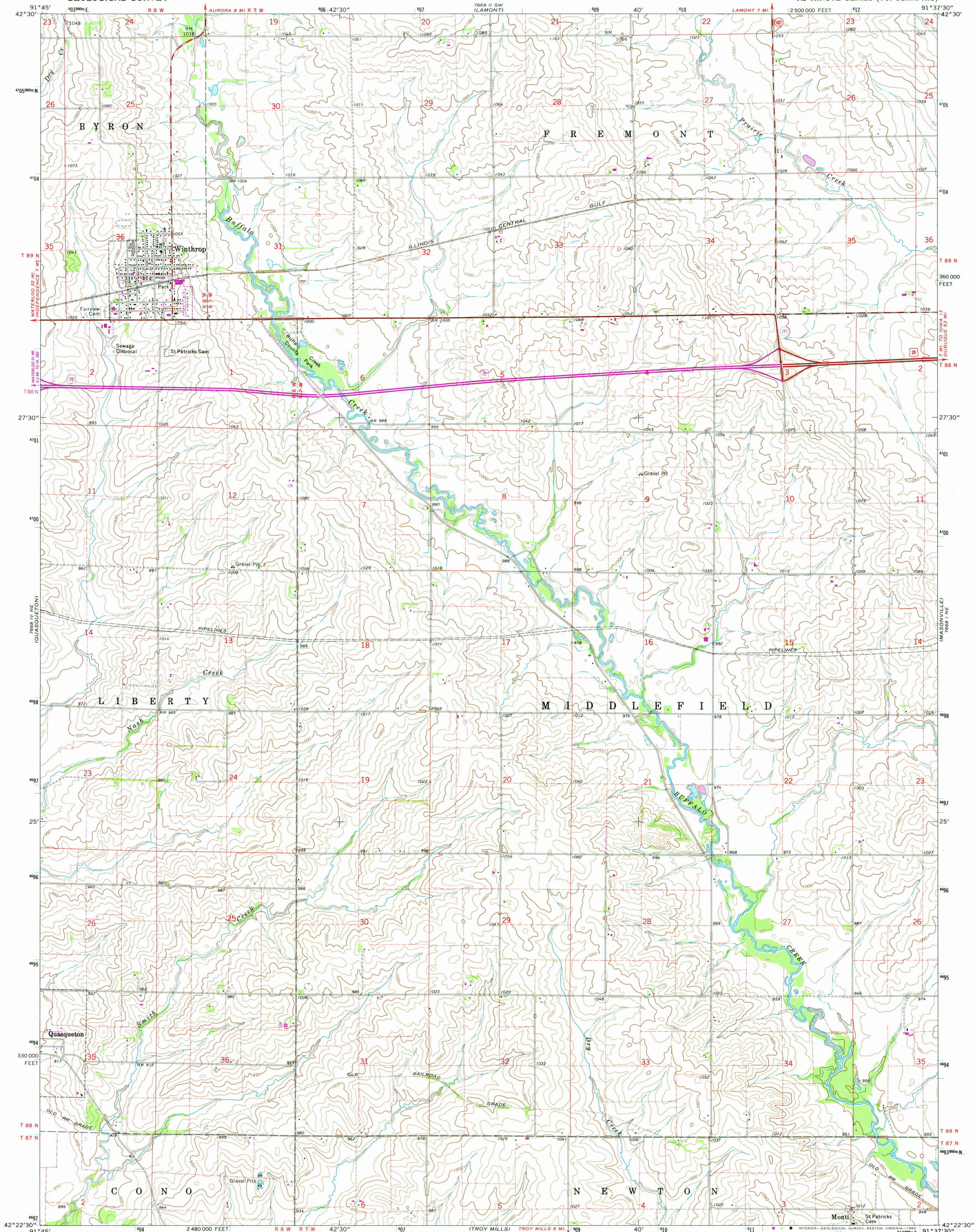


UNITED STATES
DEPARTMENT OF THE INTERIOR
GEOLOGICAL SURVEY

WINTHROP QUADRANGLE
IOWA—BUCHANAN CO.
7.5 MINUTE SERIES (TOPOGRAPHIC)



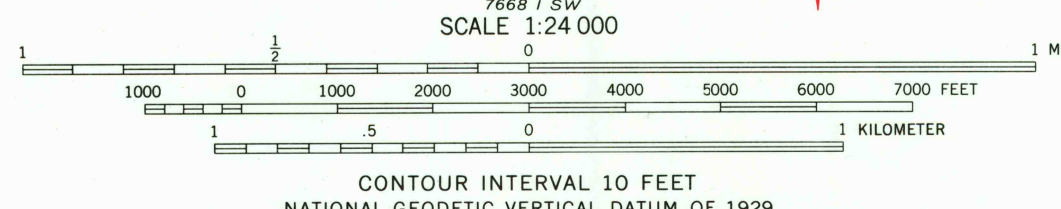
Mapped, edited, and published by the Geological Survey
Control by USGS and NOS/NOAA

Topography by photogrammetric methods from aerial photographs
taken 1973. Field checked 1973

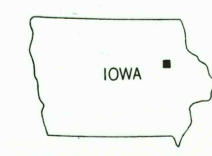
Projection and 10,000-foot grid ticks: Iowa coordinate system, north zone
(Lambert conformal conic). 1000-meter Universal Transverse Mercator
grid ticks, zone 15, shown in blue. 1927 North American Datum
To place on the predicted North American Datum 1983 move the
projection lines 4 meters north and 14 meters east as shown
by dashed corner ticks

Fine red dashed lines indicate selected fence and field lines where
generally visible on aerial photographs. This information is unchecked

Revisions shown in purple and woodland compiled from
aerial photographs taken 1980 and other sources. This
information not field checked. Map edited 1982



THIS MAP COMPLIES WITH NATIONAL MAP ACCURACY STANDARDS
FOR SALE BY U. S. GEOLOGICAL SURVEY, DENVER, COLORADO 80225, OR RESTON, VIRGINIA 22092
AND BY THE IOWA GEOLOGICAL SURVEY, IOWA CITY, IOWA 52240
A FOLDER DESCRIBING TOPOGRAPHIC MAPS AND SYMBOLS IS AVAILABLE ON REQUEST



ROAD CLASSIFICATION
Primary highway, hard surface ————— Light-duty road, hard or improved surface ————
Secondary highway, hard surface ———— Unimproved road ————
○ Interstate Route ○ U. S. Route ○ State Route

WINTHROP, IOWA
N4222.5—W9137.5/7.5

1973
PHOTOREVISED 1982
DMA 6681 NW—SERIES V876

SEP 20 1983