

ANAMOSA, IOWA

30 X 60 MINUTE SERIES (TOPOGRAPHIC)

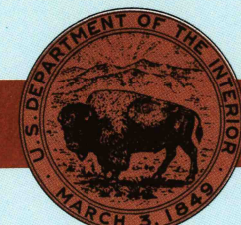
Anamosa
IOWA

1:100 000-scale metric
topographic map



30 X 60 MINUTE QUADRANGLE
SHOWING

- Contours and elevations in meters
- Highways, roads and other manmade structures
- Water features
- Woodland areas
- Geographic names



GEOLOGICAL SURVEY

1984

Produced by the United States Geological Survey

Compiled from USGS 1:24 000-scale topographic maps dated 1965-1983. Planimetry revised from aerial photographs taken 1983 and other source data. Revised information not field checked. Map edited 1984.
Projection and 10 000-meter grid, zone 15.
Universal Transverse Mercator:
25 000-foot grid ticks based on Iowa coordinate system, north zone
1927 North American Datum
To place on the predicted North American Datum 1983, move the projection lines 4 meters north and 13 meters east
There may be private inholdings within the boundaries of the National or State reservations shown on this map

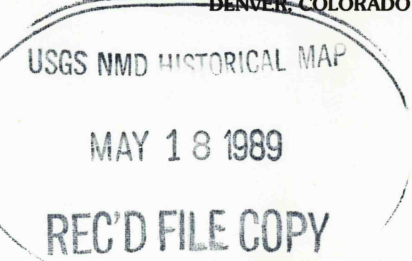
CONTOUR INTERVAL 10 METERS

NATIONAL GEODETIC VERTICAL DATUM OF 1929
ELEVATIONS SHOWN TO THE NEAREST METER

THIS MAP COMPLIES WITH NATIONAL MAP ACCURACY STANDARDS

CONVERSION TABLE		DECLINATION DIAGRAM	ADJOINING MAPS		
Meters	Feet		1	2	3
1	3.2808		4	5	
2	6.5617				
3	9.8425				
4	13.1234				
5	16.4042				
6	19.6850				
7	22.9659				
8	26.2467				
9	29.5275				
10	32.8084				
To convert meters to feet multiply by 3.2808					
To convert feet to meters multiply by 0.3048					

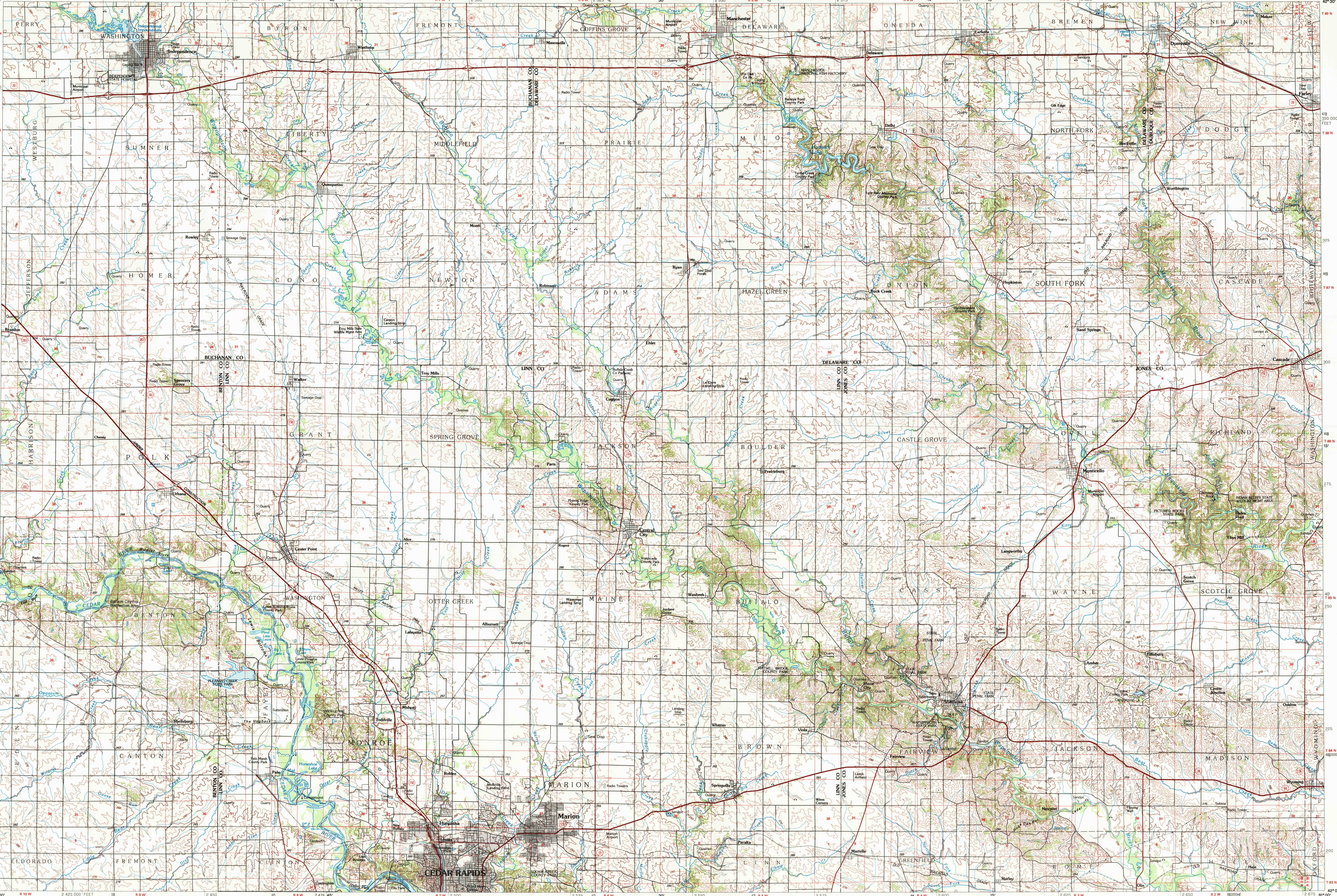
FOR SALE BY U.S. GEOLOGICAL SURVEY
DISTRIBUTION: COLORADO 80225, OR RESTON, VIRGINIA 22092



Topographic Map Symbols

Primary highway, hard surface	
Secondary highway, hard surface	
Light duty road, principal street, hard or improved surface	
Other road or street; trail	
Route marker: Interstate; U.S. State	
Railroad: standard gauge; narrow gauge	
Bridge: overpass; underpass	
Tunnel: road; railroad	
Built up area, locality: elevation	
Airport; landing field; landing strip	
National boundary	
State boundary	
County boundary	
National or State reservation boundary	
Land grant boundary	
U.S. public lands survey: range, township, section	
Range, township, section line, protected	
Power transmission line; pipeline	
Dam; dam with lock	
Cemetery; building	
Windmill; water well; spring	
Mine shaft; adit or cave; mine, quarry; gravel pit	
Compost; picnic area; U.S. location monument	
Ruin; cliff dwelling	
Distorted surface: strip mine, lava, sand	
Contours: index; intermediate; supplementary	
Bathymetric contours: index; intermediate	
Stream, lake, perennial; intermittent	
Rapids, large and small; lake, large and small	
Area to be submerged; marsh, swamp	
Land subject to controlled inundation; woodland	
Scrub; mangrove	
Orchard; vineyard	

A pamphlet describing topographic maps is available on request



• INTERIOR—GEOLOGICAL SURVEY, RESTON, VIRGINIA—1988

KILOMETERS 1 0 1 2 3 4 5 6 7 8 9 10 11 12 13 14 15 16 17 18 19 20

MILES 1 0 1 2 3 4 5 6 7 8 9 10 11 12 13

SCALE 1:100 000

1 CENTIMETER ON THE MAP REPRESENTS 1 KILOMETER ON THE GROUND

CONTOUR INTERVAL 10 METERS

1000 0 5000

10 000 20 000 30 000 40 000 50 000 60 000 70 000 FEET

ANAMOSA, IOWA

42091-A1-TM-100

1984