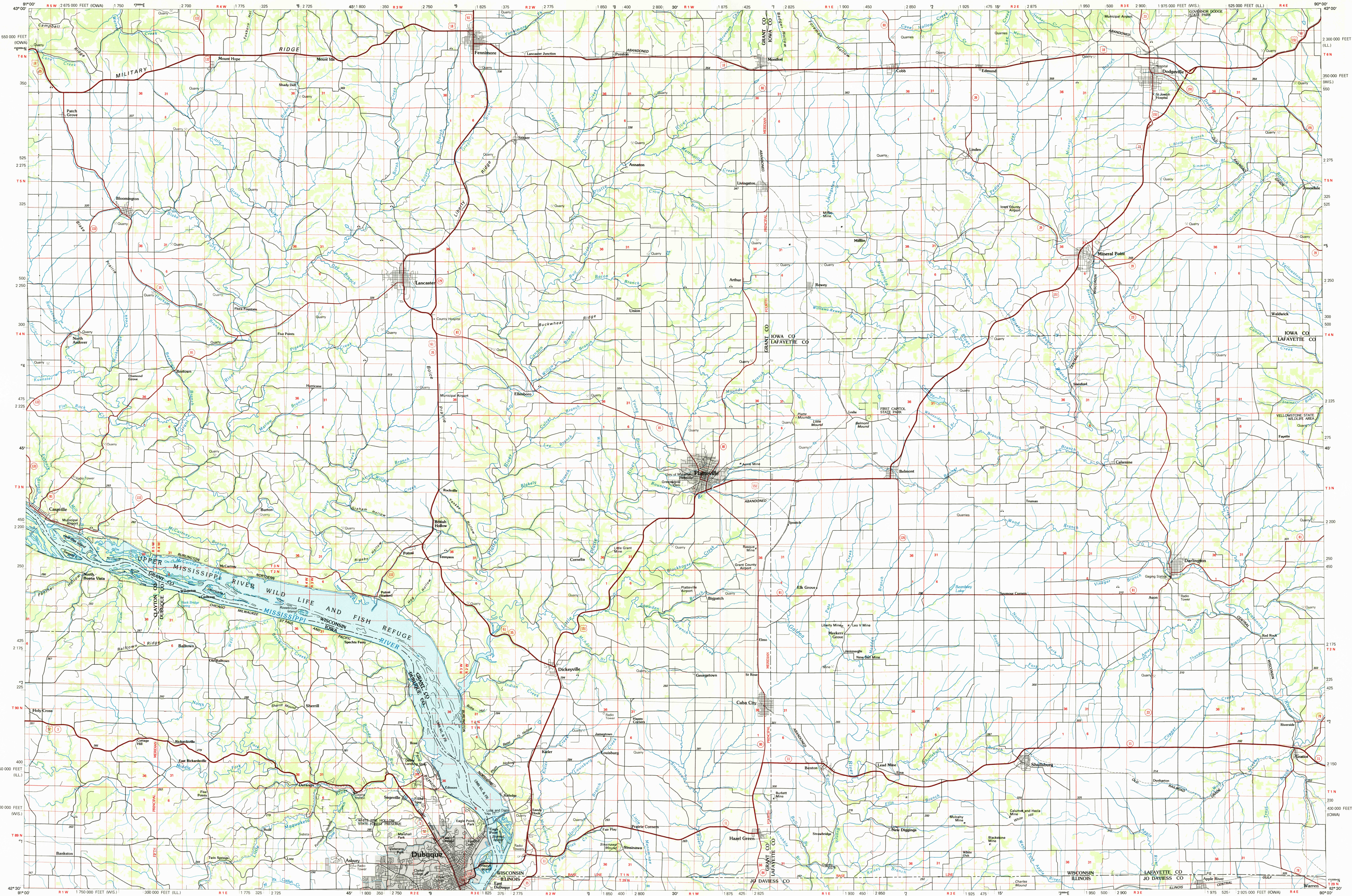


DUBUQUE NORTH, IOWA-WIS.-ILL.

30 X 60 MINUTE SERIES (PLANIMETRIC)



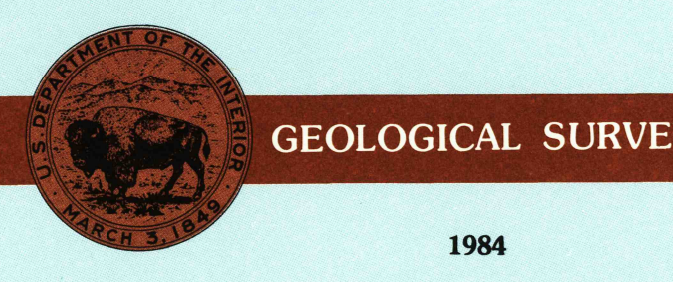
Dubuque North
IOWA-WIS.-ILL.

1:100 000-scale
planimetric map



30 X 60 MINUTE QUADRANGLE
SHOWING

- Elevations in meters
- Highways, roads and other manmade structures
- Water features
- Woodland areas
- Geographic names



Produced by the United States Geological Survey
Compiled from USGS 1:24 000-scale topographic maps dated 1952-1980. Planimetry revised from aerial photographs taken 1982-83 and other source data. Revised information not field checked. Map edited 1984.
Projection and 10 000-meter grid, zone 15, Universal Transverse Mercator
25 000-foot grid ticks based on Wisconsin coordinate system, south zone, Iowa coordinate system, north zone, and Illinois coordinate system, west zone
1927 North American Datum
To place on the predicted North American Datum 1983, move the projection lines 4 meters north and 11 meters east
There may be private inholdings within the boundaries of the National or State reservations shown on this map

NATIONAL GEODETIC VERTICAL DATUM OF 1929
ELEVATIONS SHOWN TO THE NEAREST METER

THIS MAP COMPLIES WITH NATIONAL MAP ACCURACY STANDARDS

CONVERSION TABLE		DECLINATION DIAGRAM	ADJOINING MAPS
Meters	Feet		1 2 3
1	3 280		4
2	6 560		5
3	9 840		6
4	13 120		7
5	16 400		8
6	19 680		
7	22 960		
8	26 240		
9	29 520		
10	32 800		

To convert meters to feet multiply by 3.2808
To convert feet to meters multiply by 0.3048
To convert meters to feet multiply by 3.2808
To convert feet to meters multiply by 0.3048

UTM grid convergence (GN) and 1984 magnetic declination (MN) at center of map diagram is approximate

1 Decorah
2 Rockland Center
3 Madison
4 Delmon
5 Monroe
6 Anamosa
7 Dubuque South
8 Rockford

FOR SALE BY U. S. GEOLOGICAL SURVEY
DENVER, COLORADO 80225, OR RESTON, VIRGINIA 22092

Topographic Map Symbols

- Primary highway, hard surface
- Secondary highway, hard surface
- Light duty road, principal street, hard or improved surface
- Other road or street; trail
- Route marker: Interstate, U.S., State
- Railroad: standard gage, narrow gage
- Bridge: overpass, underpass
- Tunnel: road, railroad
- Built up area: locality, elevation
- Airport: landing field; landing strip
- National boundary
- State boundary
- County boundary
- National or State reservation boundary
- Land grant boundary
- U.S. public lands survey: range, township, section
- Range, township, section line: protected
- Power transmission line: pipeline
- Dam; dam with lock
- Cemetery; building
- Windmill; water well; spring
- Mine shaft; adit or cave; mine, quarry; gravel pit
- Campground; picnic area; U.S. location monument
- Ruin; cliff dwelling
- Distorted surface: strip mine, lava, sand
- Contours: index, intermediate, supplementary
- Bathymetric contours: index, intermediate
- Stream, lake: perennial, intermittent
- Rapids, large and small; falls, large and small
- Area to be submerged; marsh, swamp
- Land subject to controlled inundation; woodland
- Scrub; mangrove
- Orchard; vineyard

A pamphlet describing topographic maps is available on request

RETURN TO:
USGS AND HISTORICAL MAP ARCHIVES