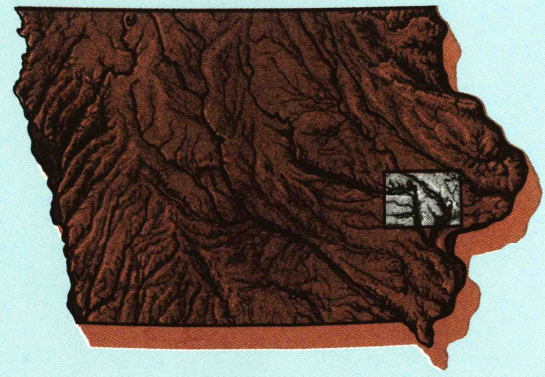


Iowa City

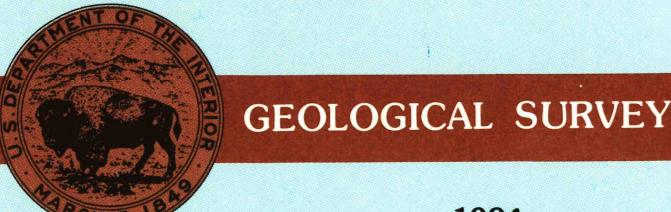
IOWA

1:100 000-scale metric
topographic map



30 X 60 MINUTE QUADRANGLE
SHOWING

- Contours and elevations in meters
- Highways, roads and other manmade structures
- Water features
- Woodland areas
- Geographic names

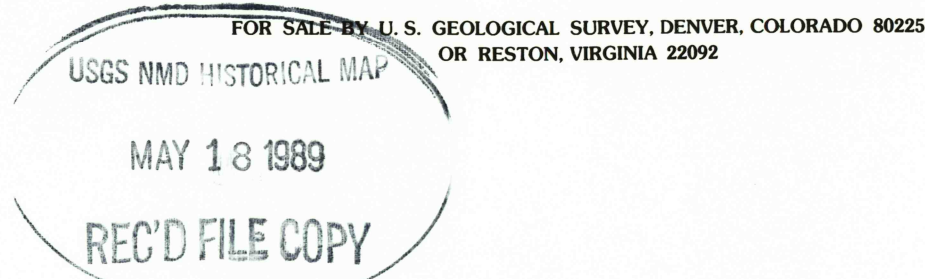


Produced by the United States Geological Survey
Compiled from USGS 1:24 000-scale topographic maps dated 1953-1983. Planimetry revised from aerial photographs taken 1983 and other source data. Revised information not field checked. Map edited 1984.
Projection and 10 000-meter grid, zone 15, Universal Transverse Mercator
25 000-foot grid ticks based on Iowa coordinate system, south and north zones
1927 North American Datum
To place on the predicted North American Datum 1983, move the projection lines 3 meters north and 13 meters east
There may be private inholdings within the boundaries of the National or State reservations shown on this map

CONTOUR INTERVAL 10 METERS
NATIONAL GEODETIC VERTICAL DATUM OF 1929
ELEVATIONS SHOWN TO THE NEAREST METER

THIS MAP COMPLIES WITH NATIONAL MAP ACCURACY STANDARDS

CONVERSION TABLE		DECLINATION DIAGRAM		ADJOINING MAPS			
Meters	Feet			1	2	3	
1	3.2808			4		5	
2	6.5617						
3	9.8425						
4	13.1234						
5	16.4042						
6	19.6850						
7	22.9658						
8	26.2467						
9	29.5275						
10	32.8084						
To convert meters to feet multiply by 3.2808		UTM grid convergence (GN) and 1984 magnetic declination (MD) at center of map		1 Marshalltown 2 Anamosa 3 Dubuque South 4 Grinnell 5 Des Moines 6 Dubuque North 7 Muscatine 8 Albia			
To convert feet to meters multiply by 0.3048							



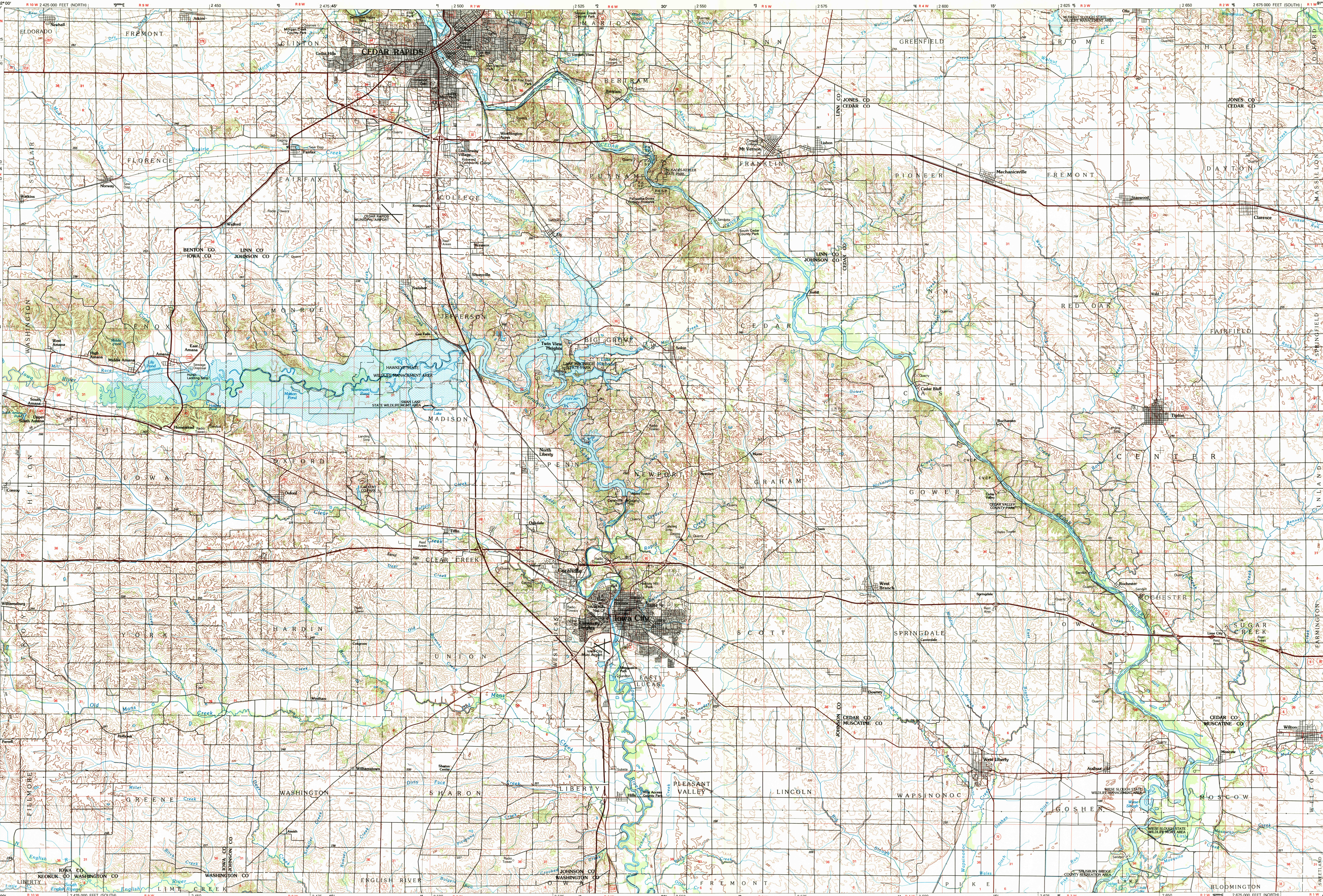
Topographic Map Symbols

Primary highway, hard surface.....	
Secondary highway, hard surface.....	
Light duty road, principal street, hard or improved surface.....	
Other road or street; trail.....	
Route marker: Interstate, U.S.; State.....	
Railroad: standard gage; narrow gage.....	
Bridge: overpass; underpass.....	
Tunnel: road; railroad.....	
Built up area; locality; elevation.....	
Airport; landing field; landing strip.....	
National boundary.....	
State boundary.....	
County boundary.....	
National or State reservation boundary.....	
Land grant boundary.....	
U.S. public lands survey: range, township, section.....	
Range, township, section line: protracted.....	
Power transmission line; pipeline.....	
Dam; dam with lock.....	
Cemetery; building.....	
Windmill; water well; spring.....	
Mine shaft; adit or cave; mine, quarry; gravel pit.....	
Campground; picnic area; U.S. location monument.....	
Ruins; old dwelling.....	
Distorted surface: strip mine, lava, sand.....	
Contours: index; intermediate; supplementary.....	
Bathymetric contours: index; intermediate.....	
Stream, lake; perennial; intermittent.....	
Rapids, large and small; falls, large and small.....	
Area to be submerged; marsh, swamp.....	
Land subject to controlled inundation; woodland.....	
Scrub; mangrove.....	
Orchard; vineyard.....	

A pamphlet describing topographic maps is available on request

IOWA CITY, IOWA

30 X 60 MINUTE SERIES (TOPOGRAPHIC)



SCALE 1:100 000
1 CENTIMETER ON THE MAP REPRESENTS 1 KILOMETER ON THE GROUND
CONTOUR INTERVAL 10 METERS

IOWA CITY, IOWA
41091-E1-TM-100

1984