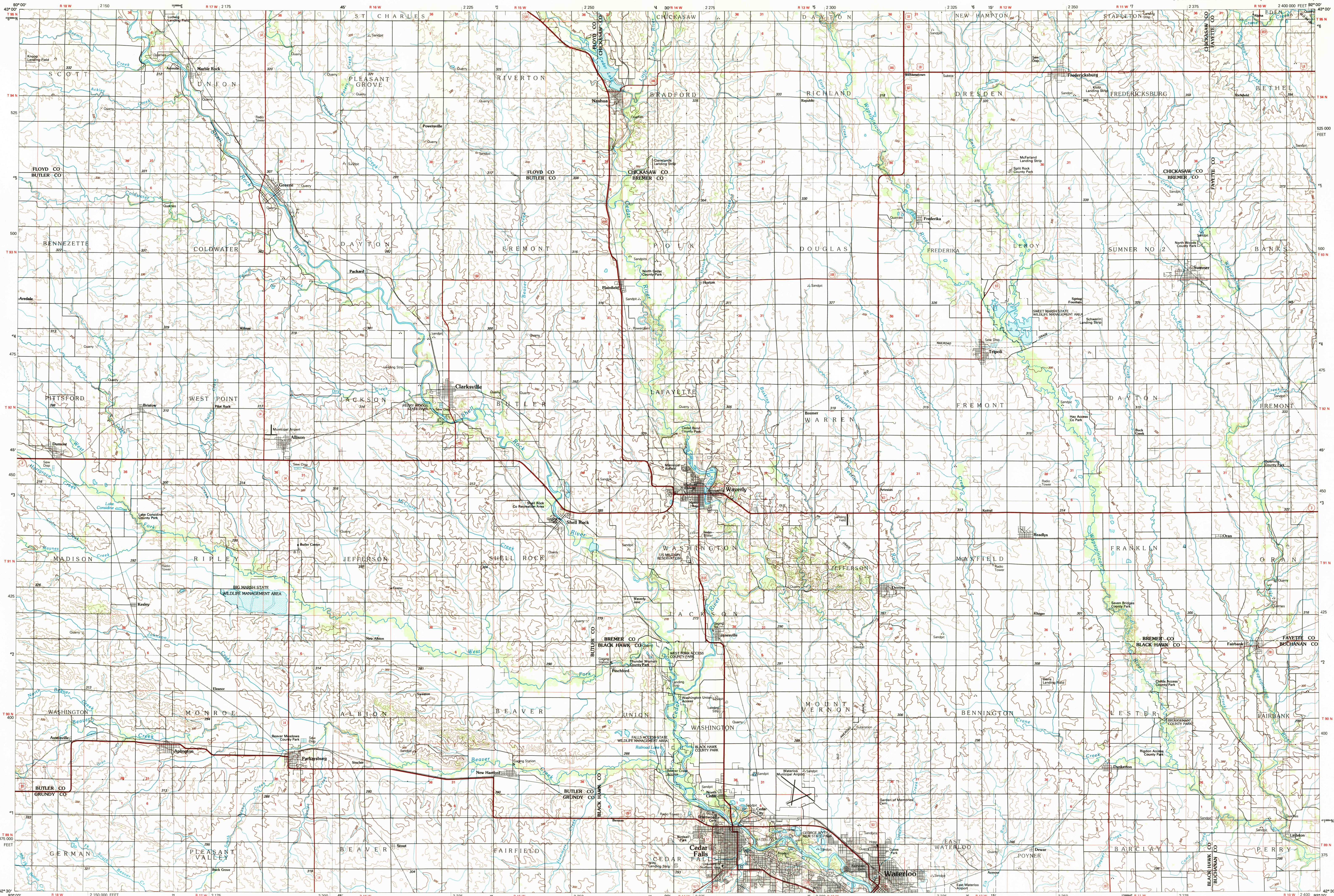


WAVERLY, IOWA



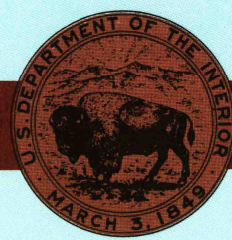
Waverly
IOWA

1:100 000-scale metric
topographic map



30 X 60 MINUTE QUADRANGLE
SHOWING

- Contours and elevations in meters
- Highways, roads and other manmade structures
- Water features
- Woodland areas
- Geographic names



GEOLOGICAL SURVEY

1984

Produced by the United States Geological Survey
Compiled from USGS 1:24 000-scale topographic maps dated 1963-1980. Planimetry revised from aerial photographs taken 1984 and other source data. Revised information not field checked. Map edited 1984

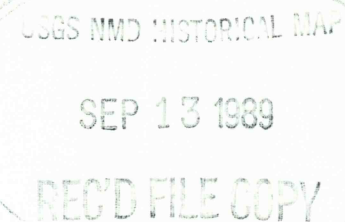
Projection and 10 000-meter grid, zone 15.
Universal Transverse Mercator
25 000-foot grid ticks based on Iowa coordinate system, north zone
1927 North American Datum
To place on the predicted North American Datum 1983, move the projection lines 5 meters north and 16 meters east
There may be private inholdings within the boundaries of the National or State reservations shown on this map

CONTOUR INTERVAL 10 METERS
NATIONAL GEODETIC VERTICAL DATUM OF 1929
ELEVATIONS SHOWN TO THE NEAREST METER

THIS MAP COMPLIES WITH NATIONAL MAP ACCURACY STANDARDS

CONVERSION TABLE		DECLINATION DIAGRAM		ADJOINING MAPS			
Meters	Ft	GN		1	2	3	
2	6.562	GN		4	4	4	
4	13.125	GN		6	7	8	
6	19.685	GN					
8	26.247	GN					
10	32.808	GN					
To convert meters to feet multiply by 3.2808		UTM grid convergence (GN) and 1984 magnetic declination (MN) at center of map. Diagram is approximate		1 Mason City 2 Charles City 3 Decatur 4 Iowa Falls 5 Osceola 6 Ames 7 Marshalltown 8 Anamosa			

FOR SALE BY U.S. GEOLOGICAL SURVEY
DENVER, COLORADO 80225, OR RESTON, VIRGINIA 22092



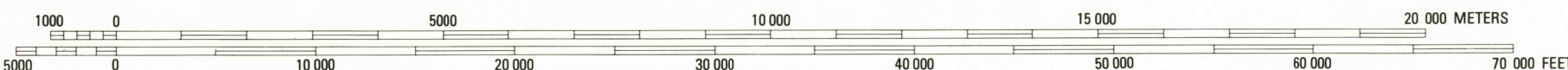
Topographic Map Symbols

Primary highway, hard surface	Secondary highway, hard surface	Light duty road, principal street, hard or improved surface	Other road or street; trail	Route marker: Interstate, U.S., State	Railroad: standard gage; narrow gage	Bridge, overpass, underpass	Tunnel: road; railroad	Built up area; locality; elevation	Airport; landing field; landing strip	National boundary	County boundary	National or State reservation boundary	Land grant boundary	U.S. public lands survey: range, township; section	Range, township; section line: protracted	Power transmission line: pipeline	Dam; dam with lock	Cemetery; building	Windmill; water well; spring	Mine shaft; adit or cave; mine, quarry; gravel pit	Campground; picnic area; U.S. location monument	Ruins; cliff dwelling	Distorted surface: strip mine, lava, sand	Contours: index, intermediate, supplementary	Bathymetric contours: index, intermediate	Stream, lake: perennial; intermittent	Rapids, large and small; falls, large and small	Area to be submerged; marsh, swamp	Land subject to controlled inundation; woodland	Shrub; mangrove	Drainage; viewpoint
-------------------------------	---------------------------------	---	-----------------------------	---------------------------------------	--------------------------------------	-----------------------------	------------------------	------------------------------------	---------------------------------------	-------------------	-----------------	--	---------------------	--	---	-----------------------------------	--------------------	--------------------	------------------------------	--	---	-----------------------	---	--	---	---------------------------------------	---	------------------------------------	---	-----------------	---------------------

A pamphlet describing topographic maps is available on request



SCALE 1:100 000
1 CENTIMETER ON THE MAP REPRESENTS 1 KILOMETER ON THE GROUND
CONTOUR INTERVAL 10 METERS



WAVERLY, IOWA
42092-E1-TM-100

1984