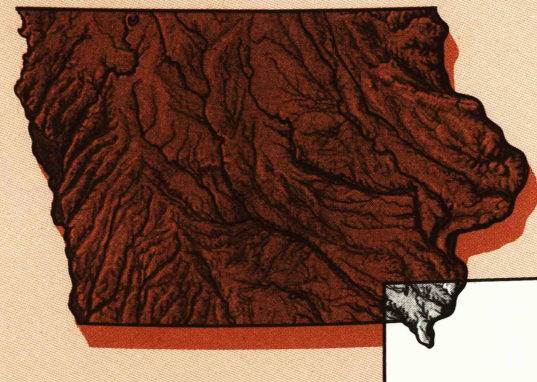


Burlington

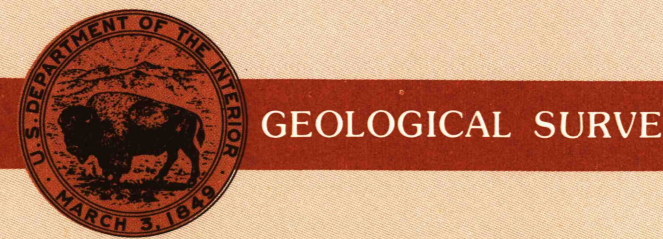
IOWA-ILLINOIS-MISSOURI

1:250 000-scale metric
topographic map



1 X 2 DEGREE QUADRANGLE
SHOWING

- Contours and elevations in meters
- Highways, roads and other manmade structures
- Water features
- Woodland areas
- Geographic names



1990

Produced by the United States Geological Survey
Compiled from USGS 1:100 000-scale maps dated 1985-1989
Supersedes map dated 1958. Map edited 1990

North American Datum of 1983 (NAD 83). Projection and
10 000-meter grid: Universal Transverse Mercator, zone 15.
25 000-meter grid ticks: Illinois (west zone), Iowa (south zone),
and Missouri (east zone), Coordinate Systems of 1983

The difference between NAD 83 and North American Datum of
1927 (NAD 27) for 7.5 minute intersections is given in USGS
Bulletin 1875

There may be private inholdings within the boundaries of
the National or State reservations shown on this map

CONTOUR INTERVAL 20 METERS
NATIONAL GEODETIC VERTICAL DATUM OF 1929
ELEVATIONS SHOWN TO THE NEAREST METER

1990 MAGNETIC DECLINATION FROM TRUE NORTH VARIES
FROM 2° 1' (44 MILS) EASTERLY FROM THE CENTER OF THE
WEST EDGE TO 7° 1' (9 MILS) EASTERLY FOR THE CENTER
OF THE EAST EDGE. MEAN ANNUAL CHANGE IS 7.9 WESTERLY

THIS MAP COMPLIES WITH NATIONAL MAP ACCURACY STANDARDS
USGS NAD HISTORICAL MAP

AUG 27 1990

REC'D FILE COPY

ADJOINING MAPS	
1	2
3	4
5	6
7	8

Meters	Feet	Feet	Meters
1	3.2808	2	6.5617
2	6.5617	3	9.8425
3	9.8425	4	13.1234
4	13.1234	5	16.4042
5	16.4042	6	19.6850
6	19.6850	7	22.9659
7	22.9659	8	26.2467
8	26.2467	9	29.5276
9	29.5276	10	32.8084

To convert meters to feet
multiply by 3.2808

To convert feet to meters
multiply by 0.3048

FOR SALE BY U.S. GEOLOGICAL SURVEY
DENVER, COLORADO 80225, OR RESTON, VIRGINIA 22092

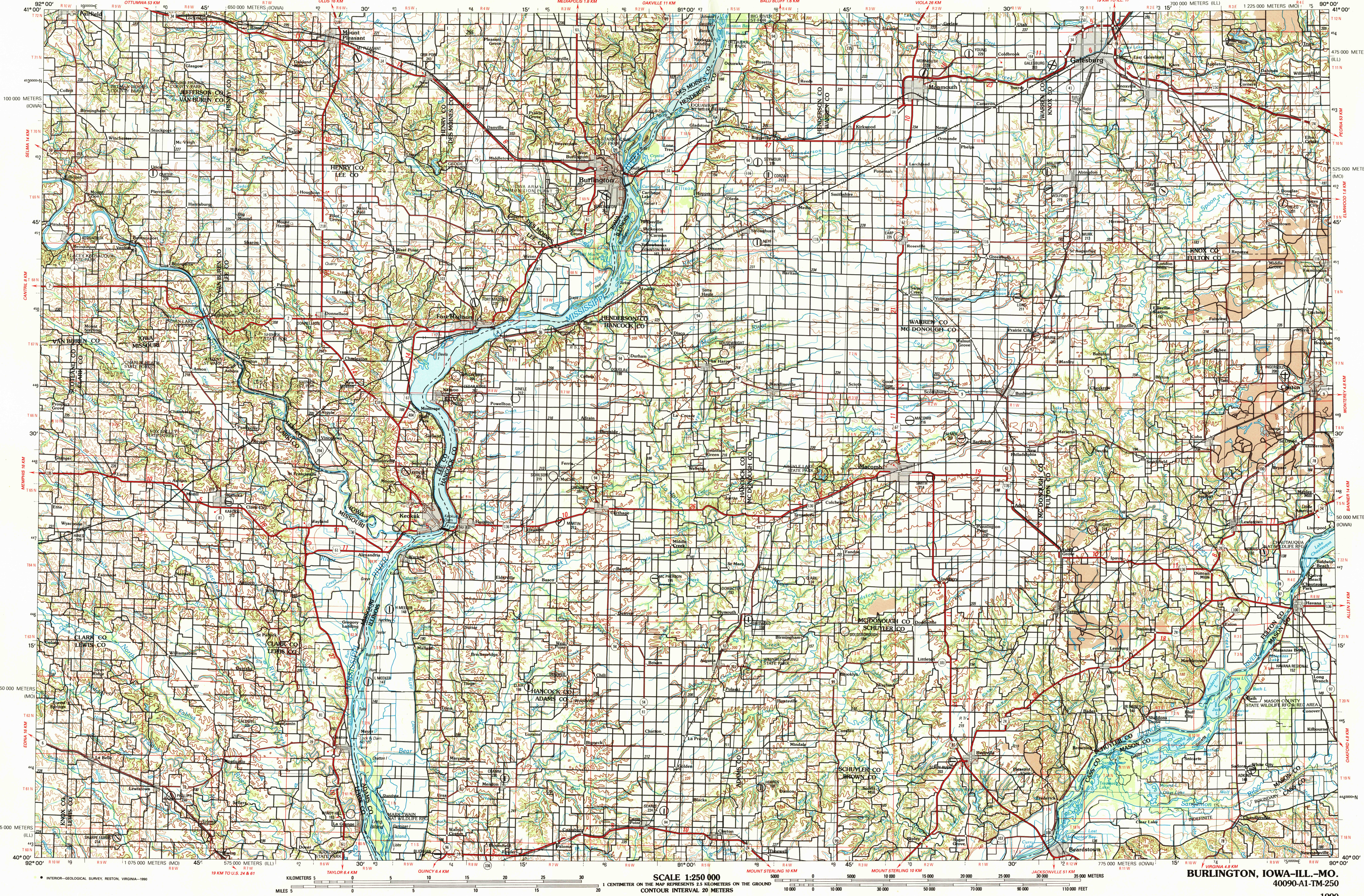
Topographic Map Symbols

Dual highway, interchange	
Primary highway, hard surface	
Secondary highway, hard surface	
Light duty road, hard or improved surface	
Other road, trail	
Route marker: Interstate, U.S., State	
Bridge: overpass, underpass	
Tunnel: road, railroad	
Railroad: standard gauge, single, multiple track	
Railroad: narrow gauge, single, multiple track	
Build-up area, locality, elevation	
Airport, runway pattern known, unknown	
National boundary	
State boundary	
County boundary	
National or State reservation boundary	
Land grant boundary	
U.S. public lands survey: range, township (surveyed)	
U.S. public lands survey: range, township (protracted)	
Dam, landmark feature, landmark building	
Well, water, other, spring, tank	
Cave, mine, quarry, oil platform	
Landmark area, landmark racetrack	
Distorted surface: strip mine, lava, sand	
Contours: index, intermediate, supplementary	
Bathymetric contours: index, primary	
Bathymetric contours: intermediate, supplementary	
Stream, lake, perennial, intermittent	
Rapids, large and small; falls, large and small	
Land subject to controlled inundation, marsh, swamp	
Woodland; orchard, vineyard	
Mangrove	

Figures in red denote approximate distances in kilometers between markers

A pamphlet describing topographic maps is available on request

BURLINGTON, IOWA-ILL.-MO.



• INTERIOR—GEOLOGICAL SURVEY, RESTON, VIRGINIA—1990

SCALE 1:250 000
1 CENTIMETER ON THE MAP REPRESENTS 2.5 KILOMETERS ON THE GROUND
CONTOUR INTERVAL 20 METERS

BURLINGTON, IOWA-ILL.-MO.
40090-A1-TM-250

1990