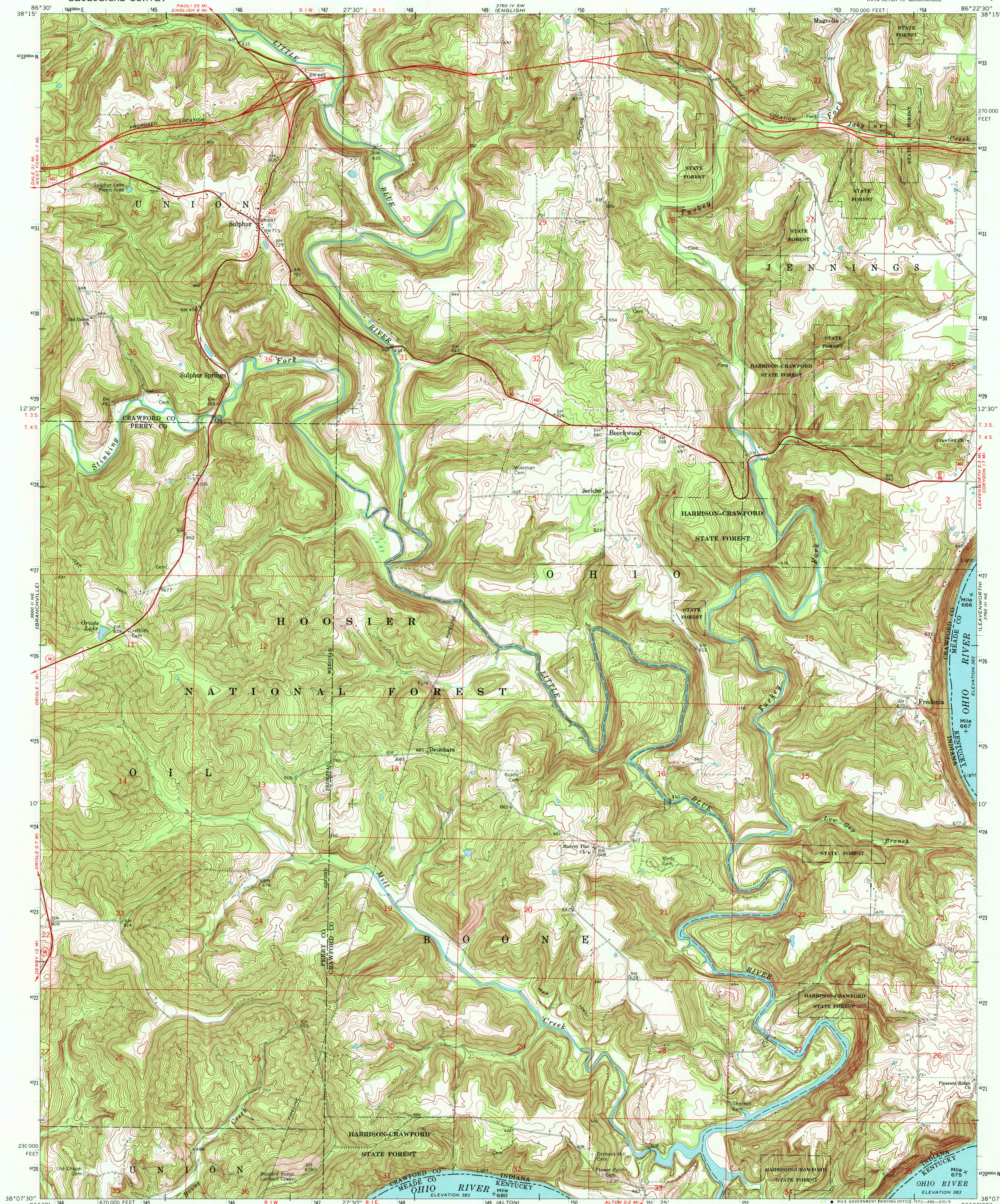


UNITED STATES
DEPARTMENT OF THE INTERIOR
GEOLOGICAL SURVEY

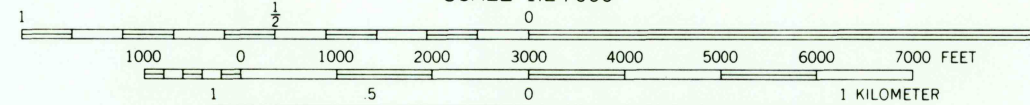
BEECHWOOD QUADRANGLE
INDIANA-KENTUCKY
7.5 MINUTE SERIES (TOPOGRAPHIC)
NW/4 ALTON 15' QUADRANGLE



Mapped, edited, and published by the Geological Survey
Revised in cooperation with Indiana Department
of Natural Resources

Control by USGS, USC&GS, USCE, and Indiana Flood Control
and Water Resources Commission
Topography by photogrammetric methods from aerial photographs
taken 1947 and 1948. Field checked 1950. Revised from aerial
photographs taken 1969. Field checked 1970
Polyconic projection. 1927 North American datum
10,000-foot grid based on Indiana coordinate system, west zone
1000-meter Universal Transverse Mercator grid ticks,
zone 16, shown in blue

Fine red dashed lines indicate selected fence and field lines where
generally visible on aerial photographs. This information is unchecked
The state boundary as shown represents the approximate position of
the low water line as determined from U. S. Corps of Engineers
Ohio River charts, surveyed 1912, and supplementary information



CONTOUR INTERVAL 10 FEET
DATUM IS MEAN SEA LEVEL

THIS MAP COMPLIES WITH NATIONAL MAP ACCURACY STANDARDS
FOR SALE BY U. S. GEOLOGICAL SURVEY, WASHINGTON, D. C. 20242
INDIANA DEPARTMENT OF NATURAL RESOURCES, INDIANAPOLIS, INDIANA 46204
KENTUCKY GEOLOGICAL SURVEY, LEXINGTON, KENTUCKY 40506,
AND KENTUCKY DEPARTMENT OF COMMERCE, FRANKFORT, KENTUCKY 40601
A FOLDER DESCRIBING TOPOGRAPHIC MAPS AND SYMBOLS IS AVAILABLE ON REQUEST



ROAD CLASSIFICATION
Primary highway, hard surface
Secondary highway, hard surface
Light-duty road, hard or improved surface
Unimproved road
Interstate Route
U. S. Route
State Route

BEECHWOOD, IND.-KY. FILE COPY
NW/4 ALTON 15' QUADRANGLE
N3807.5-W8622.5/7.5
1970
AMS 3760 III NW-SERIES V851

USGS
HISTORICAL FILE
TOPOGRAPHIC DIVISION

MAP INFORMATION OFFICE
GEOLOGICAL SURVEY