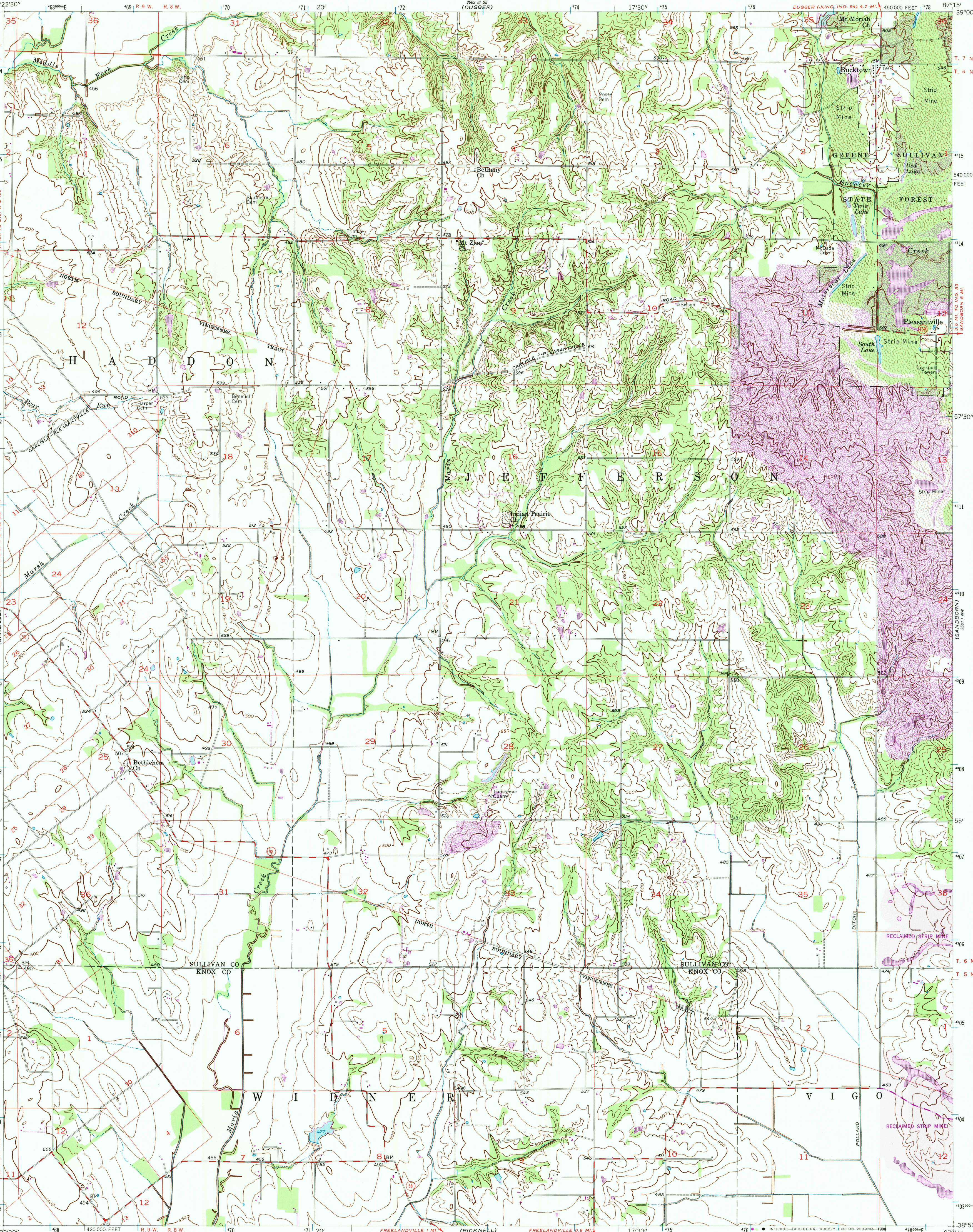


UNITED STATES
DEPARTMENT OF THE INTERIOR
GEOLOGICAL SURVEY

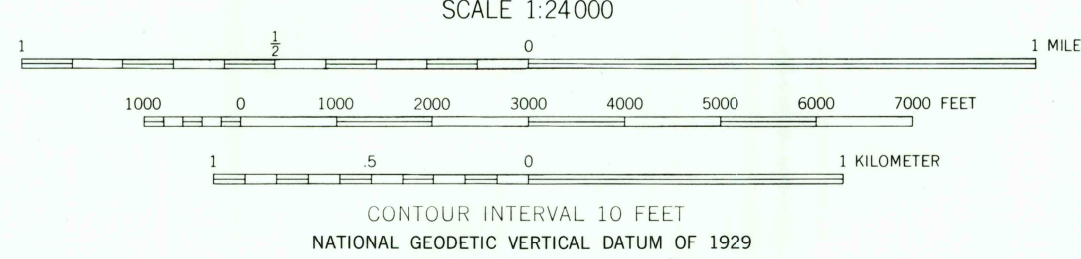
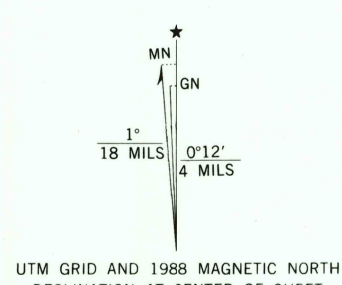
STATE OF INDIANA
INDIANA DEPARTMENT OF CONSERVATION
INDIANAPOLIS, INDIANA

BUCKTOWN QUADRANGLE
INDIANA
7.5 MINUTE SERIES (TOPOGRAPHIC)



Mapped, edited, and published by the Geological Survey

Control by USGS and NOS/NOAA
Topography by planetable surveys 1941. Revised 1957
Polyconic projection. 1927 North American Datum
10,000-foot grid ticks based on Indiana coordinate system, west zone
1000-meter Universal Transverse Mercator grid ticks,
zone 16, shown in blue
To place on the predicted North American Datum 1983
move the projection lines 2 meters south and
2 meters east as shown by dashed corner ticks
There may be private inholdings within the boundaries of
the National or State reservations shown on this map
Revisions shown in purple and woodland compiled in cooperation
with State of Indiana agencies from aerial photographs taken 1987
and other sources. This information not field checked
Map edited 1988



BUCKTOWN, IND.
38087-H3-TF-024

THIS MAP COMPLIES WITH NATIONAL MAP ACCURACY STANDARDS
FOR SALE BY U. S. GEOLOGICAL SURVEY, DENVER, COLORADO 80225 OR RESTON, VIRGINIA 22092,
AND INDIANA DEPARTMENT OF NATURAL RESOURCES, INDIANAPOLIS, INDIANA 46204
A FOLDER DESCRIBING TOPOGRAPHIC MAPS AND SYMBOLS IS AVAILABLE ON REQUEST

Light purple tint indicates reclaimed strip mine areas
Contours in strip mine areas may not accurately represent
present topography

1957
PHOTOREVISED 1988
DMA 5561 IV NE - SERIES 1981

USGS NMN HISTORICAL MAP
AUG 18 1989
REC'D FILE COPY