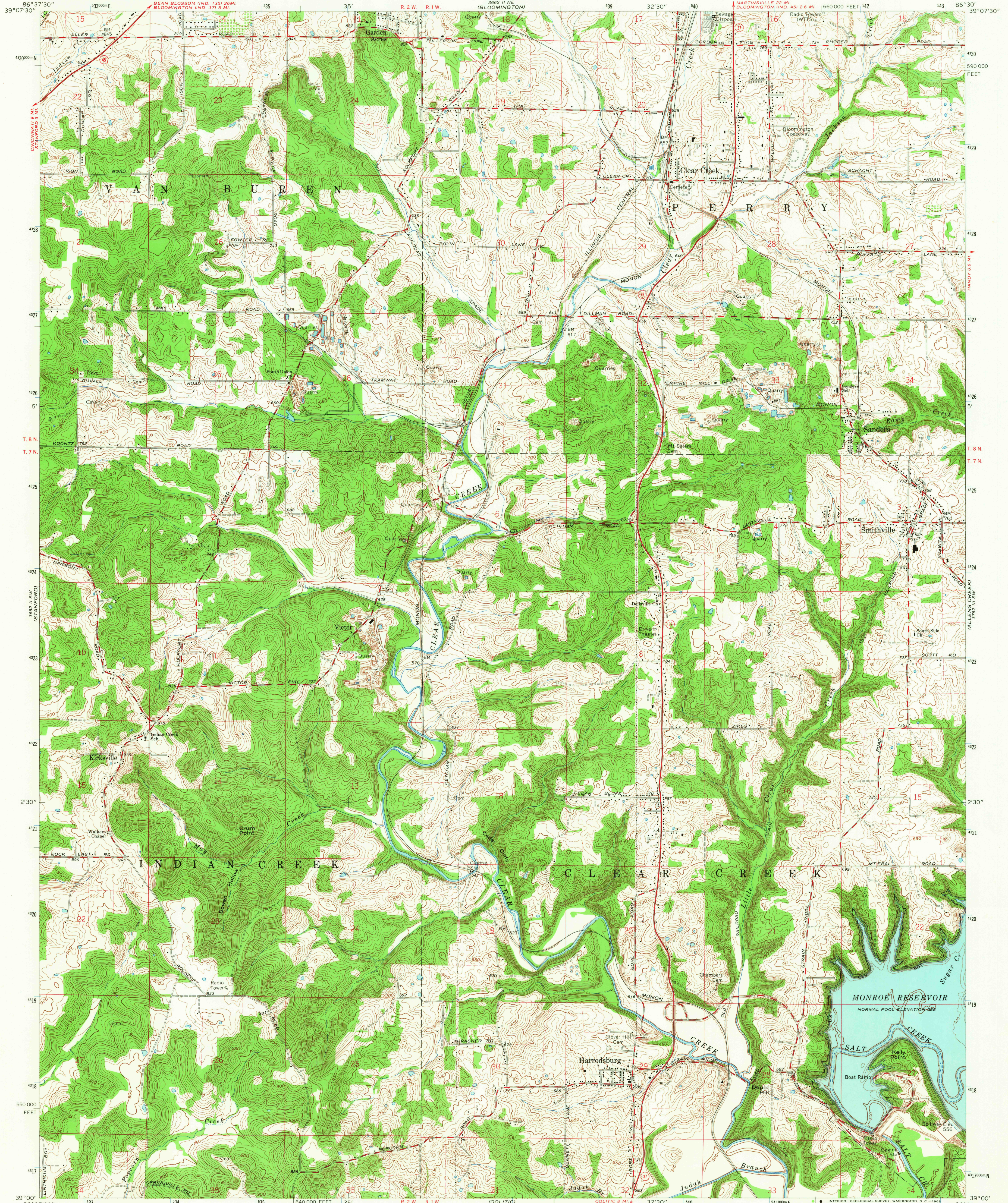


UNITED STATES  
DEPARTMENT OF THE INTERIOR  
GEOLOGICAL SURVEY

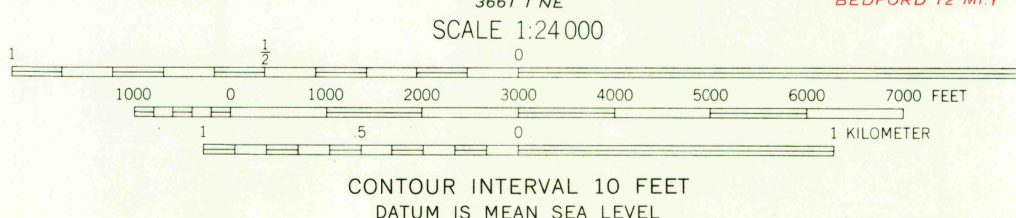
STATE OF INDIANA  
DEPARTMENT OF NATURAL RESOURCES  
INDIANAPOLIS, INDIANA

CLEAR CREEK QUADRANGLE  
INDIANA—MONROE CO.  
7.5 MINUTE SERIES (TOPOGRAPHIC)  
SE/4 BLOOMINGTON 15' QUADRANGLE



Mapped, edited, and published by the Geological Survey  
Control by USGS and USC&GS  
Topography by photogrammetric methods from aerial photographs  
taken 1955. Field checked 1956. Revised 1965  
Polyconic projection. 1927 North American datum  
10,000-foot grid based on Indiana coordinate system, west zone  
1000-meter Universal Transverse Mercator grid ticks,  
zone 16, shown in blue  
Fine red dashed lines indicate selected fence and field lines where  
generally visible on aerial photographs. This information is unchecked  
U.S. reservation boundary from maps by U.S. Corps of Engineers  
Areas covered by dashed light-blue pattern  
are subject to controlled inundation

UTM GRID AND 1965 MAGNETIC NORTH  
DECLINATION AT CENTER OF SHEET



THIS MAP COMPLIES WITH NATIONAL MAP ACCURACY STANDARDS  
FOR SALE BY U.S. GEOLOGICAL SURVEY, WASHINGTON, D.C. 20242  
AND INDIANA DEPARTMENT OF NATURAL RESOURCES, INDIANAPOLIS, INDIANA 46204  
A FOLDER DESCRIBING TOPOGRAPHIC MAPS AND SYMBOLS IS AVAILABLE ON REQUEST

USGS  
Historical File  
Topographic Division

U.S.G.S.  
COPY  
TOPOGRAPHIC DIVISION

ROAD CLASSIFICATION  
Heavy-duty ——— Light-duty ———  
Medium-duty ——— Unimproved dirt ———  
○ State Route

CLEAR CREEK, IND.  
SE/4 BLOOMINGTON 15' QUADRANGLE  
N3900—W8630/7.5  
1965  
AMS 3662 II SE—SERIES V851

2755  
OCT 23 1968