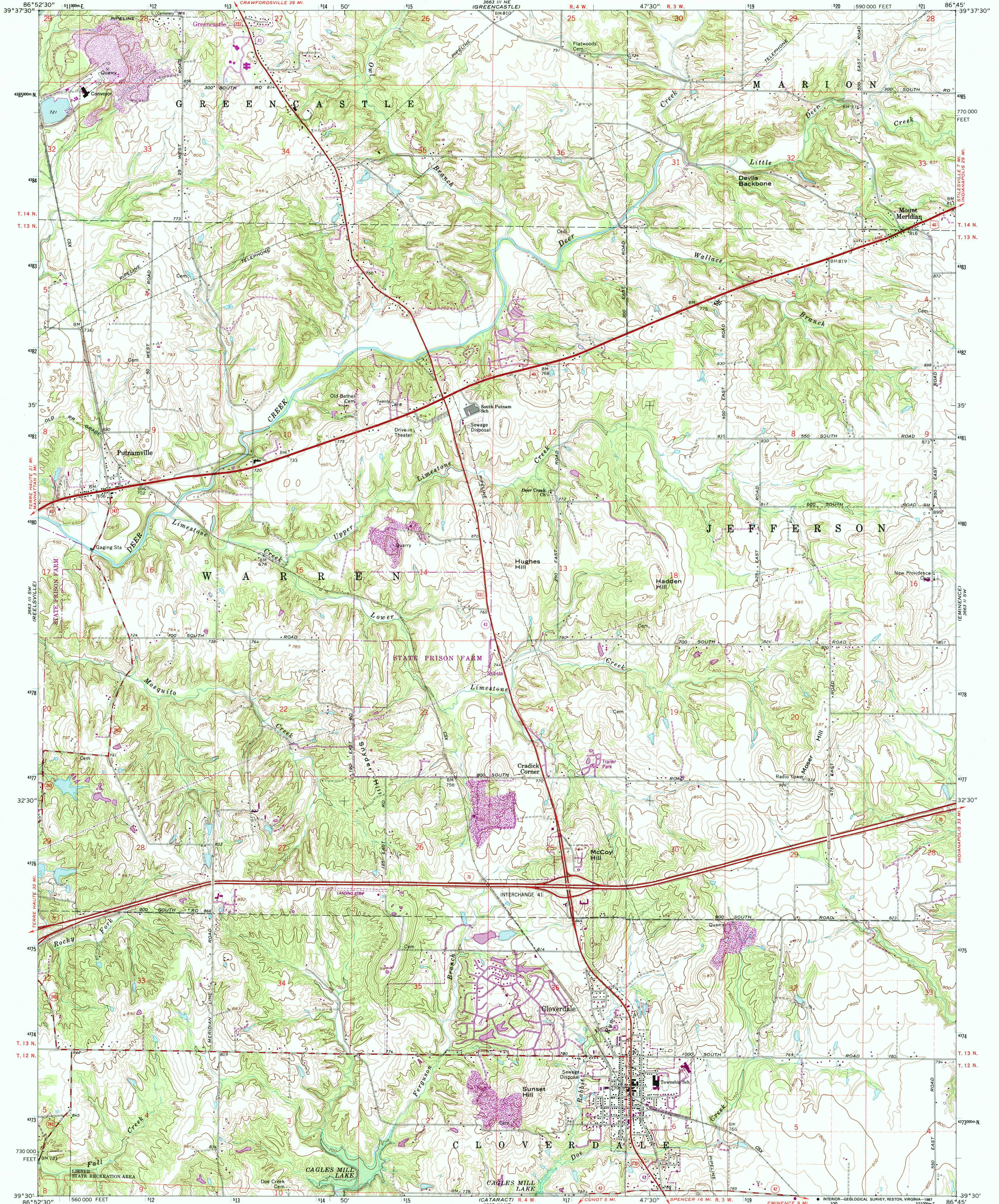


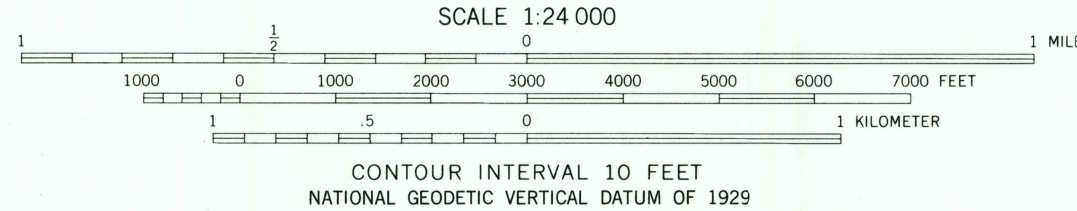
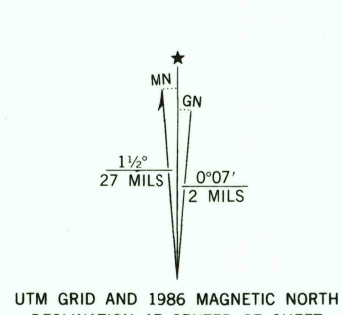
UNITED STATES  
DEPARTMENT OF THE INTERIOR  
GEOLOGICAL SURVEY

STATE OF INDIANA  
DEPARTMENT OF NATURAL RESOURCES  
INDIANAPOLIS, INDIANA

CLOVERDALE QUADRANGLE  
INDIANA—PUTNAM CO.  
7.5 MINUTE SERIES (TOPOGRAPHIC)



Mapped, edited, and published by the Geological Survey  
Control by USGS, NOS/NOAA  
Topography by photogrammetric methods from aerial photographs  
taken 1955. Field checked 1956. Revised from aerial photographs  
taken 1969. Field checked 1970  
Polyconic projection, 10,000-foot grid ticks based on  
Indiana coordinate system, west zone  
1000-meter Universal Transverse Mercator grid ticks  
zone 16, shown in blue  
1927 North American Datum  
To place on the predicted North American Datum 1983  
move the projection lines 1 meter south and  
1 meter east as shown by dashed corner ticks  
Fine red dashed lines indicated selected fence and field lines where  
generally visible on aerial photographs. This information is unchecked  
Areas covered by dashed light-blue pattern  
are subject to controlled inundation  
There may be private inholdings within the boundaries of  
the National or State reservations shown on this map



THIS MAP COMPLIES WITH NATIONAL MAP ACCURACY STANDARDS  
FOR SALE BY U.S. GEOLOGICAL SURVEY  
DENVER, COLORADO 80225, OR RESTON, VIRGINIA 22092  
AND INDIANA DEPARTMENT OF NATURAL RESOURCES, INDIANAPOLIS, INDIANA 46204  
A FOLDER DESCRIBING TOPOGRAPHIC MAPS AND SYMBOLS IS AVAILABLE ON REQUEST

Revisions shown in purple and woodland compiled in cooperation  
with State of Indiana agencies from aerial photographs  
taken 1983 and other sources. This information not field checked  
Map edited 1986

ROAD CLASSIFICATION  
Primary highway, hard surface  
Secondary highway, hard surface  
Interstate Route  
Light-duty road, hard or improved surface  
Unimproved road  
U.S. Route  
State Route

QUADRANGLE LOCATION  
INDIANA

CLOVERDALE, IND.  
39086-E7-TF-024  
1970  
PHOTOREVISED 1986  
DMA 3663 III SE—SERIES 7851