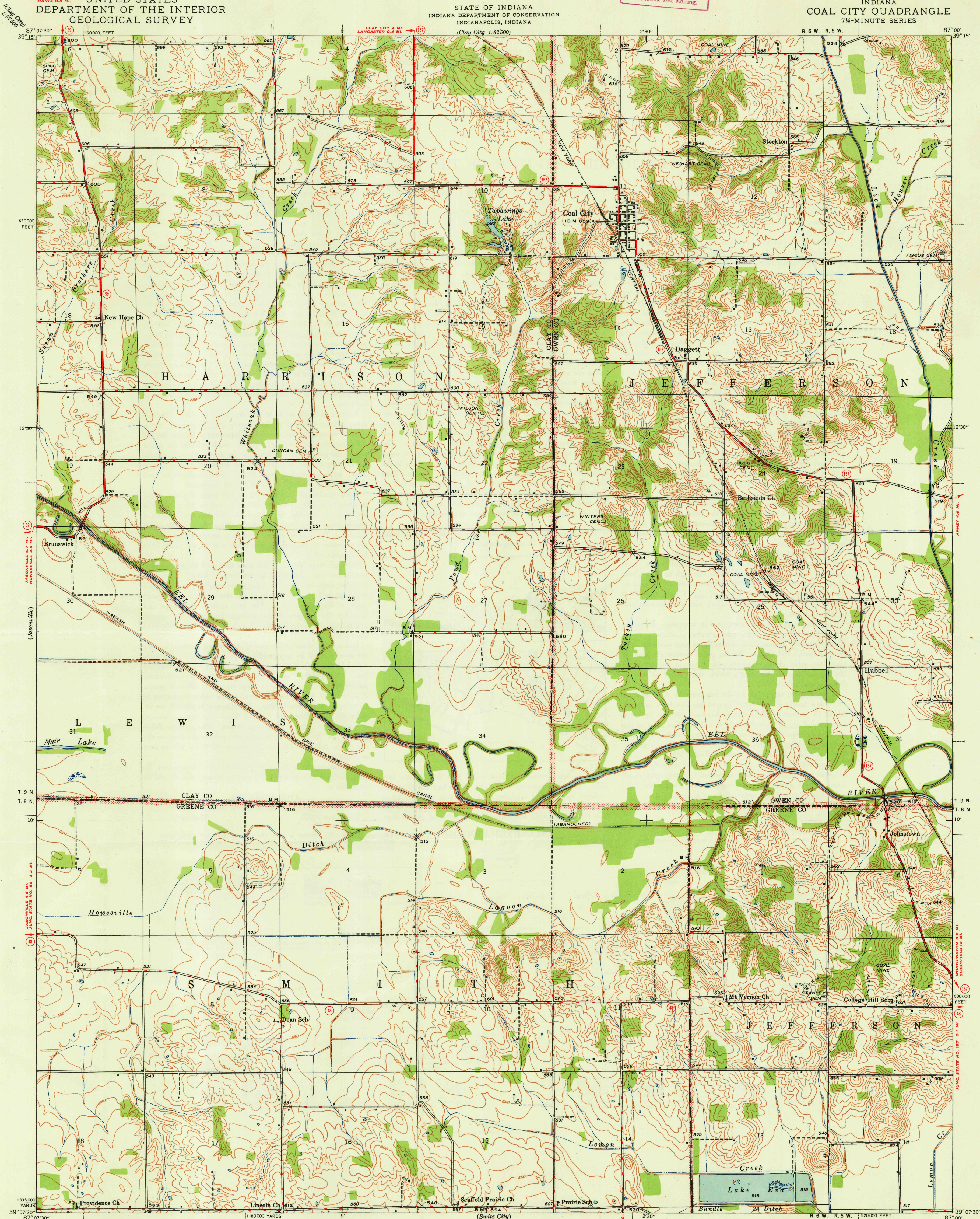


U. S. G. S.
FILE COPY
Inspection and Editing.

UNITED STATES
DEPARTMENT OF THE INTERIOR
GEOLOGICAL SURVEY

STATE OF INDIANA
INDIANA DEPARTMENT OF CONSERVATION
INDIANAPOLIS, INDIANA

INDIANA
COAL CITY QUADRANGLE
7½-MINUTE SERIES



Albert Pike, Division Engineer
Topography by R. F. Hamke and
Corps of Engineers, U. S. Army
Surveyed in 1938

Scale 1:24,000
Contour interval 10 feet
Datum is mean sea level

USGS
Historical File
Topographic Division

Polyconic projection. 1927 North American datum
5000 yard grid based on U. S. zone system, C
10000 foot grid based on Indiana (West)
rectangular coordinate system

COAL CITY, IND.
Edition of 1948
N 3907.5 - W 8700.7.5

U. S. G. S.
FILE COPY
Inspection and Editing.